



## OIL-WET INCLINING PLATFORM SLIP RESISTANCE TEST

### Creation 70 DB vinyl plank

**Prepared for:** Gerflor Australasia Pty Ltd  
Steve Gradecak  
17 Cato Street  
HAWTHORN EAST VIC 3123

**Specimen Description:** Creation 70 DB vinyl plank, 153x555 mm.

**No. of Specimens:** 6 off

**Surface Structure:** Smooth

**Specimen Preparation:** Washed with water and pH neutral detergent, rinsed then dried.

**Specimen Configuration:** Fixed

**Test Direction:** Test conducted parallel with surface profile.

**Joint Type & Width:** N/A

**Air Temperature:** 21°C

**Test Standard:** AS 4586:2013 Slip resistance classification of new pedestrian surface materials, Appendix D - Oil Wet Inclining Platform Test

**Test Shoe:** Leipzig V73-SP

**Test Location:** ATTAR, Unit 1, 64 Bridge Road, Keysborough.

**Test Date:** 3 April 2019

**Test Personnel:** Awel Guled and Dale Siegle

<b>Displacement Space</b> (rounded to the nearest 0.5cm <sup>3</sup> /dm <sup>2</sup> ):	Not tested
<b>Displacement Space Assessment Group</b> (Appendix E, AS 4586 - 2013):	Not tested
<b>Corrected mean overall acceptance angle (<math>\alpha_{ave}</math>)</b> (rounded down to the nearest degree):	10°
<b>Classification:</b>	R10

These results apply only to the specimens tested and it is recommended that before selection of flooring or paving materials the effect of service conditions, including maintenance procedures and wear on their slip resistance be checked.

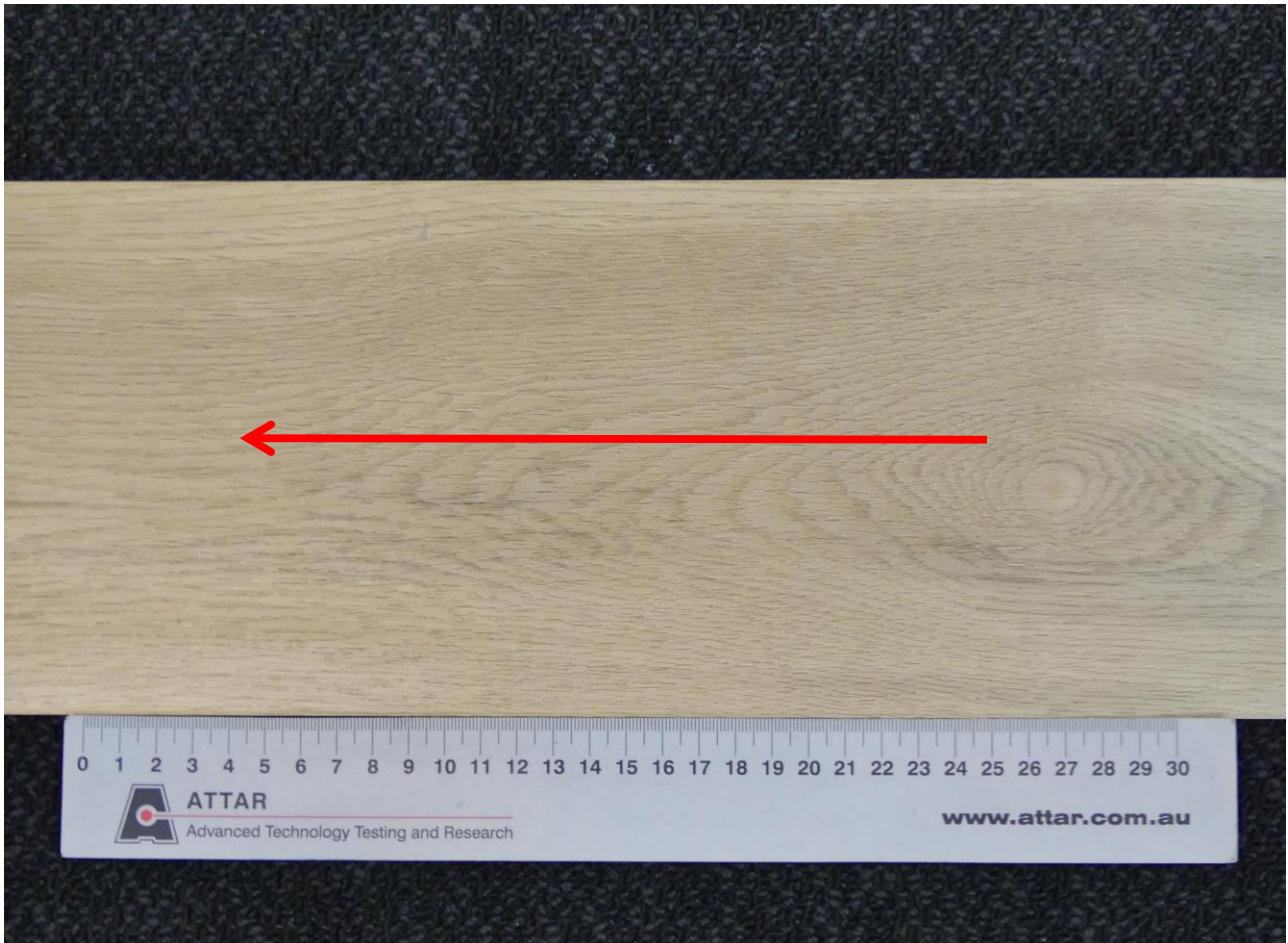


Awel Guled  
Compliance and Test Technician  
Approved Signatory

Reviewed By:



Marcus Braché  
Senior Engineering Technician  
Approved Signatory



**Figure 1:** Creation 70 DB vinyl plank  
Arrow indicates direction of testing

**CLASSIFICATION CRITERIA – AS 4586 - 2013**  
**Oil Wet Inclining Platform Test – Appendix D**

**Compliance**

**TABLE 5: CLASSIFICATION OF PEDESTRIAN SURFACE MATERIALS ACCORDING TO THE OIL-WET INCLINING PLATFORM TEST**

<b>Classification</b>	<b>Angle, degrees</b>
No Classification	<6
R9	≥6 <10
R10	≥10 <19
R11	≥19 <27
R12	≥27 <35
R13	≥35