



## MIPOLAM EVO

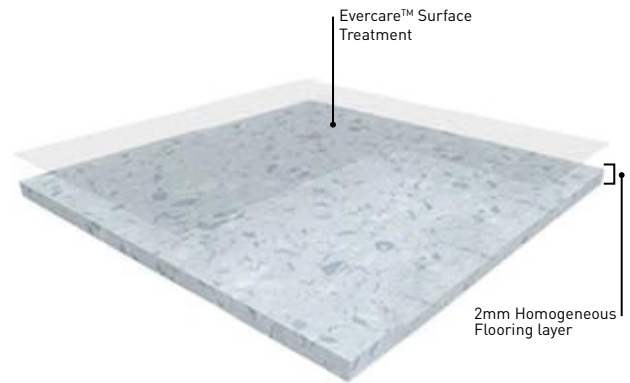


**MIPOLAM EVO** is a PVC-free homogeneous sheet flooring. It provides the same superior technical and aesthetic performance as every Mipolam range, including the revolutionary Evercare™ surface treatment.

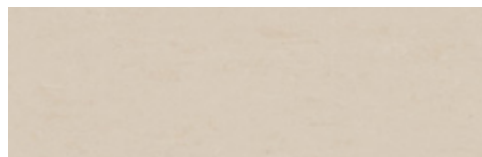
**Evercare™** is a polyurethane surface treatment obtained by UV laser cross-linking. The treatment shields floors from stains and chemical products used in the healthcare environment and increases the durability of the flooring.

### CONTRIBUTES TO A SUSTAINABLE ENVIRONMENT

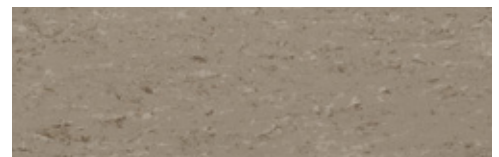
- ▶ Phthalate-free and 100% recyclable
- ▶ 100% REACH compliant
- ▶ Recycled Content 25%
- ▶ Extremely low VOC C2C Certified™ Silver
- ▶ FloorScore certified
- ▶ Third party certified product-specific Type III EPD available
- ▶ Inhibits spread of bacteria at 99% and viruses at 99.7%



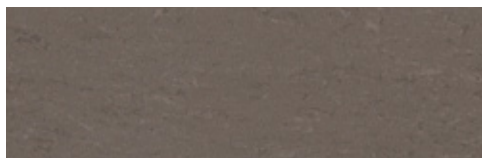
9005 VISBY



9031 KIRUNA



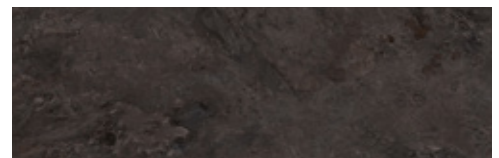
9063 NARVIK



9045 GELLO



9008 LULEA



9009 TRONDHEIM

# MIPOLAM EVO



9029 TROMSØ



9030 UPPSALA



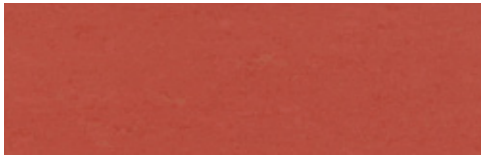
9050 MALMÖ



9044 BERGEN



9006 STOCKHOLM



9055 GÖTEBORG



9032 COPENHAGEN



9027 OSLO

# MIPOLAM EVO

DESCRIPTION	STANDARDS	REQUIREMENTS	MIPOLAM EVO
<b>PRODUCT DESCRIPTION</b>			
Reference Specification	ASTM F1913	-	Meets Performance Requirements
Construction	-	-	PVC-Free Homogeneous Sheet Flooring
Surface Treatment / Maintenance	-	-	Evercare™ / No wax for life
Gauge Total Thickness	ASTM F386	> 0.075"	0.080" (2.0 mm)
Roll Width	-	-	6'6" (2.0 m)
Roll Length	-	-	66' (20 m)
Coverage / Roll	-	-	430.6 ft² (40 m²)
Weight	-	-	0.53 lb/ft² (2.6 kg/m²)
<b>PERFORMANCE</b>			
Static Load Resistance	ASTM F970	≤ 0.005"	Meets Requirements
Abrasion	ASTM F510	-	≤ -0.08" (≤ -2 mm)
Indentation - Residual	ASTM 1914	≤ 0.007"	Meets Requirements
	ISO 24343-1	≤ 0.10 mm	Meets Requirements
Flexibility	ASTM F137	> 1.5"	Meets Requirements
Chemical & Stain Resistance	ASTM F925	-	No Residual Stains, Excellent Results; Meets Requirements
Resistance to Heat	ASTM F1514	ΔE ≤ 8	Meets Requirements
Resistance to Light	ASTM F1515	ΔE ≤ 8	Meets Requirements
Coefficient of Friction	ASTM D2047	≥ 0.6	Meets Requirements
Fire Rating - Flame Spread	ASTM E648	Class 1	Meets Requirements
	CAN/ULC S102.2	-	Meets Requirements
Fire Rating - Smoke Evolution	ASTM E662/NFPA258	450 or less	Meets Requirements
<b>ENVIRONMENT HEALTH &amp; SAFETY</b>			
Antibacterial Activity (E. Coli - S. Aureus - MRSA) after 24hr	ISO 22196	-	Inhibits Spread of Infections at 99% after 24hr*
Antiviral Activity (Human Coronavirus) after 5hr	ISO 21702	-	99.7% after 2hr / 99.9% after 5hr
Plant Certifications	-	-	ISO 14001, ISO 9001 OHSAS 18001
Production Waste	-	-	100% Manufacturing Waste Recycled
End of Life	-	-	100% Recyclable
<b>MATERIALS &amp; RESOURCES (MR)</b>		<b>LEED CONTRIBUTIONS</b>	
Environmental Product Declaration (EPD)	LEED v4 MR BPDO	1 product	Product-Specific Type III
Material Ingredients: Health Product Declaration (HPD v2.1)	LEED v4 MR BPDO	1 product	Self-Declared
Material Ingredients: Cradle to Cradle Certification	LEED v4 MR BPDD	1 product	Third-party Certified: Silver
Material Ingredients: REACH Optimization	LEED v4 MR BPDO	Contributes in international projects	100% REACH Compliant
Sourcing of Raw Materials: Recycled Content	LEED v4 MR BPDO	Contributes	20% Pre-Consumer Content
Sourcing of Raw Materials: Regional Material	LEED v4 MR BPDO	Contributes	Manufactured in Troisdorf, Germany
<b>INDOOR ENVIRONMENTAL QUALITY (IEQ)</b>			
Low Emitting Materials: FloorScore® Certified	LEED v4 IEQ	Contributes	FloorScore® Certified CDPH Standard Method v1.2
Low Emitting Materials: TVOC after 28 days	ISO 16000-6	-	<10 µg/m³
<b>WARRANTY</b>	10-year limited manufacturer warranty when installed in accordance with Gerflor's installation instructions on gerflorusa.com		

\* The best defense against the spread of infections is the implementation of an effective cleaning method.

Rubber leaves indelible stains on synthetic floorings: do not use mats with rubber backing and replace tubular furniture feet with those made of PVC or polyamide. Place mats of sufficient length at entrances to reduce outside sources of dirt.

## WE CARE | WE ACT. Our Commitments to a Sustainable future

 <p><b>CARBON FOOTPRINT*</b></p> <p>-20% kg CO<sub>2</sub> equivalent/m<sup>2</sup> between 2020 and 2025</p>	 <p><b>BIOSOURCED CONTENT**</b></p> <p>10% by 2025</p>	 <p><b>RECYCLED CONTENT</b></p> <p>30% by 2025</p>	 <p><b>ADHESIVE FREE***</b></p> <p>35% by 2025</p>	 <p><b>ANNUAL VOLUME RECYCLED</b></p> <p>60,000t by 2025</p>
*Scopes 1 and 2 defined in the GHG protocol **% of activity with biosourced materials ***% of activity - adhesive free solution				