




SAGA²

 Sound Mgt	58 dB	Protocols[®]	FloorScore[®]
--	--------------	------------------------------	-------------------------------

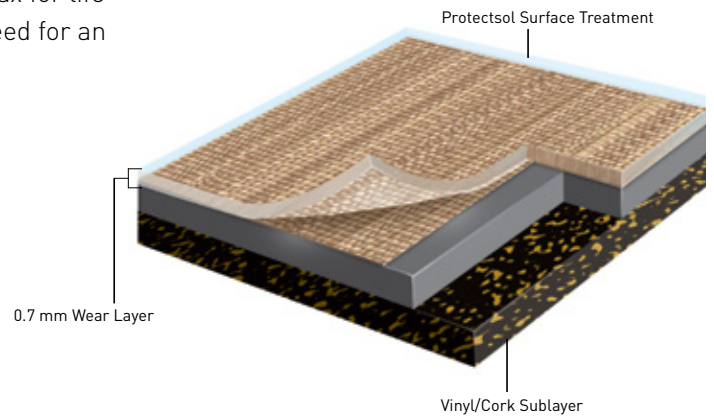
SAGA² is a 0.18" (4.6 mm) thick resilient modular tile sized 19.69" x 19.69" (50 cm x 50 cm) to match the dimensions of carpet tile for easy transitioning. Reinforced with a calendared interlayer and cork underlayer, Saga² achieves an IIC rating of 58 dB for significant noise reduction. Each tile features a decorative film protected by a 28 mil (0.7 mm) wear layer.

OUR PROTECSOL[®] SURFACE TREATMENT is a UV-cured, no wax for life treatment that provides easy maintenance and eliminates the need for an acrylic emulsion (metalization).

- ▶ 30 years of proven success
- ▶ No wax for life
- ▶ 80% reduced water and detergent use

SOUND MANAGEMENT PROPERTIES

- ▶ IIC 58dB
- ▶ Footstep Circulation <65 dB (NFS 31 074)
- ▶ Impact Noise Reduction -15 dB (EN ISO 717)

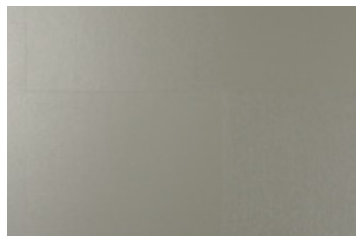


CONTRIBUTES TO A SUSTAINABLE AND WELLNESS FOCUSED ENVIRONMENT

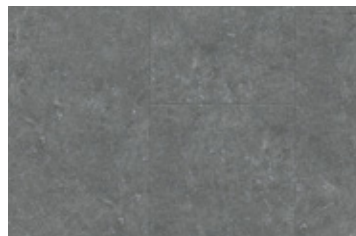
- ▶ Best indoor air quality: Low VOC; 10 times better than industry requirements
- ▶ 100% REACH compliant
- ▶ ISO 22196 compliant to inhibit the growth of fungus and bacteria.



0021 BARMA SWEET



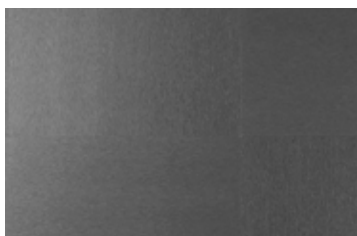
0028 FIBER SILVER



0085 DOCK GREY



0023 BARMA MYSTERY



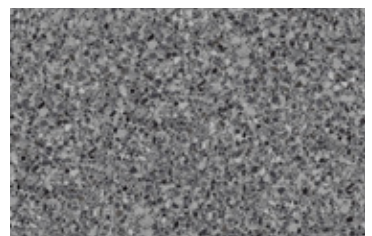
0027 FIBER HEAVY METAL



0088 GENTLEMAN GREY

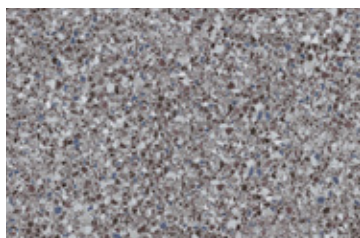


0089 GENTLEMAN TAUPE

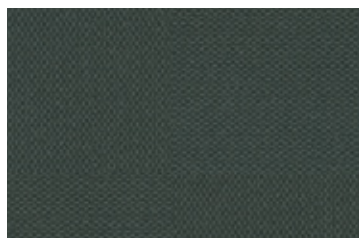


1088 DALMA GREY

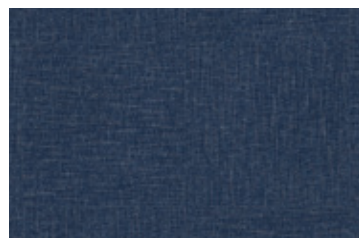
SAGA²



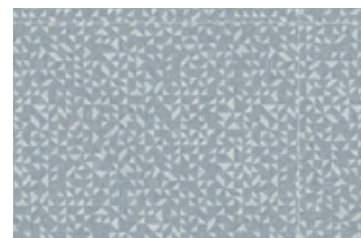
1089 DALMA BURGANDY



0017 KADINA CITY



0030 GENTLEMAN BLUE



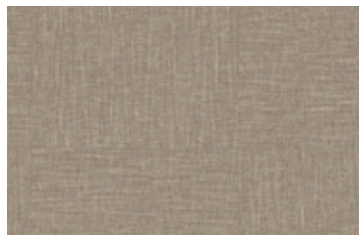
0032 MOZAIC GREY



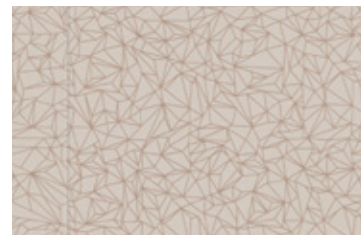
0039 SPIDER BLUE



0063 ROUGH TEXTILE GREY



0029 GENTLEMAN BEIGE



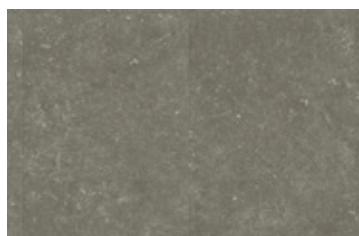
0033 SPIDER BEIGE



0025 BARMA BEIGE



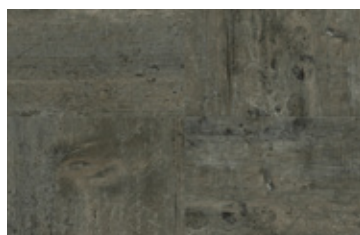
0026 FIBER COPPER



0087 DOCK TAUPE



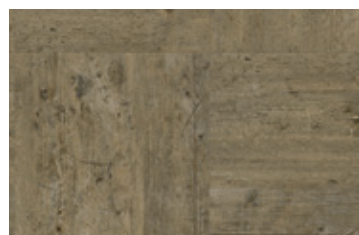
0062 ROUGH TEXTILE BEIGE



0572 AMARANTE DARK



0577 ALBION



0579 AMARANTE

DESCRIPTION	STANDARDS	REQUIREMENTS	SAGA ²
Reference Specification	ASTM F1700	-	Class III Type B
Backing	ASTM F 1303	-	Compact backing with cork
Surface Treatment / Maintenance	-	-	Protcsol® / No wax for life
Gauge Total Thickness	ASTM F386	-	0.18" [4.6 mm]
Wearlayer Thickness	ASTM F410	-	28 mil [0.7 mm]
Tile Size	-	-	19.685" x 19.685" [50 cm x 50 cm]
Coverage per Box	-	-	26.9 ft ² [2.5 m ²]
Weight	-	-	1.15 lbs/ft ² [5.6 kg/m ²]
PERFORMANCE			
Abrasion	EN 660.2	-	≤ 2 mm ³
Indentation – Residual [75 lbs]	ASTM 1914	≤ -8%	< -0.004 in [-2.2%] Meets Requirements
Coefficient of Friction	ASTM D2047	-	0.56 (Dry)
Impact Insulation Class (IIC)	ASTM E989	-	58 dB
	ASTM E492		
Thermal Conductivity	EN 12 524	-	0.25 W/[m.K]
Resistance to Heat	ASTM F 1514	ΔE ≤ 8	Meets Requirements
Resistance to Light	ASTM F 1515	ΔE ≤ 8	Meets Requirements
Dimensional Stability	F2199	< 0.02 in	Meets Requirements
Chemical & Stain Resistance [5 min and 24 hours]	ASTM F925	-	Meets Requirements
Fire Rating	ASTM E648	Class I	Class 1
Smoke Density [Flaming and Non-Flaming]	ASTM E662	-	Meets Requirements
ENVIRONMENT HEALTH & SAFETY			
Naturally bacteriostatic. Inhibits the spread of MRSA, E.Coli, S. aureus*	ISO 22196	-	Inhibits spread of infections at 99%
Allergen-Free	-	-	100% Allergen-Free
Plant Certifications	-	-	ISO 14001, ISO 9001
Production Waste	-	-	100% Manufacturing Waste Recycled
End of Life	-	-	100% Recyclable
MATERIALS & RESOURCES: BUILDING PRODUCT DISCLOSURES & OPTIMIZATION (BPDO)			
Sourcing of Raw Materials: Recycled Content	MR 4 LEED v3	-	55%
	Sourcing LEED v4		
Restriction of Harmful Chemicals	Materials LEED v4	-	100% REACH Compliant
Environmental Product Declaration (EPD)	EPD LEED v4	-	Available Upon Request
Health Product Declaration (HPD)	Materials LEED v4	-	Self Declared
MATERIALS & RESOURCES: BUILDING PRODUCT DISCLOSURES & OPTIMIZATION (BPDO)			
Indoor Air Quality / Low Emitting Materials	IEQ 4.3 LEED v3	-	FloorScore® Certified
	IEQ Option 1 LEED v4		
TVOC after 28 days	ISO 16000-6	-	< 100 µg/m ³
WARRANTY	10- year limited manufacturer warranty when installed in accordance with Gerflor's installation instructions on gerflorusa.com		

*The implementation of an effective cleaning method is the best defense against infections



NO heavy metals,
CMR 1, or CMR 2

EPD[®]
Available

