

INSTALLATION INSTRUCTIONS

GERFLOR GTI MAX CLEANTECH CLEANROOM

These instructions are specifically written for the installation of the following products:

Product	Size	Thickness	Installation direction	Seam treatment
GTI Cleantech Cleanroom	23 5/8" x 23 5/8"	6mm	Same	CR 40
GTI 4mm Underlayment	4' x 5' or 4" x 9'	4mm		
Mipolam (matching color)		2mm	Same	CR 40
Welding rod	4 mm			CR 40

Important Note: Before installing, refer to 2022 Gerflor USA Installation Handbook for acclimation, job site conditions, subfloor prep, and other general installation recommendations.

1. GENERAL INFORMATION

- 1.1. Gerflor GTI Max Cleantech Tiles are formulated to withstand high moisture conditions. To perform as designed, the concrete should be properly prepared to create a contaminate free and porous substrate.
- 1.2. Gerflor GTI Cleantech Tiles are not designed to withstand hydrostatic or osmotic pressure.
- 1.3. *The guidelines offered within this document are not intended to be all inclusive. Only qualified, professional flooring technicians experienced in the field of resilient flooring should proceed with this installation system.*
- 1.4. It is recommended to mechanically prepare the concrete via grinding or bead blasting the surface to achieve a CSP 1, clean and porous substrate.
- 1.5. Moisture and pH testing must be performed in accordance with ASTM F710-17.
- 1.6. Adhesive bond tests are recommended to ensure adequate bonding to the substrate.
- 1.7. Do not install material that has visible defects or damage. A contractor that installs material that has visible defects or damage assumes responsibility for the damaged material.

2. INSTALLATION OF GTI MAX CLEANTECH CLEANROOM

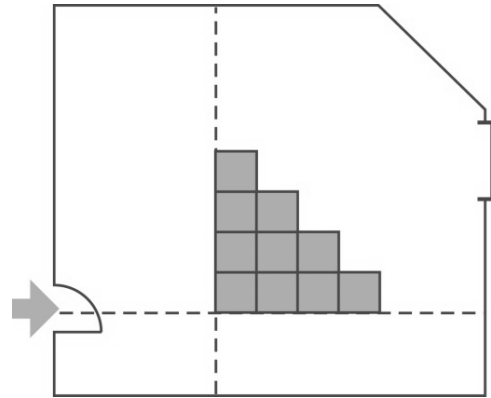
NOTE: When installing GTI MAX Cleantech Tiles, **DO NOT** pull tiles in tight to each other. Tiles installed too tightly will make the grooving process difficult. Do not leave a gap greater than 1/32-inch-wide between tiles.

- 2.1. Use Gerfix LVT & Plank Adhesive, or Gerfix 100 adhesive
- 2.2. **DO NOT** mix batches of tiles.

INSTALLATION INSTRUCTIONS

GERFLOR GTI MAX CLEANTECH CLEANROOM

- 2.3. Chalk the center lines of the work area in both directions so that one line is parallel to the length of the room and that the second line is on a 90° angle to the first line.
- 2.4. Position center lines to allow the perimeter tiles to be \geq to $\frac{1}{2}$ tile.
- 2.5. Before spreading adhesive, it is recommended to lay one or two rows of tiles along both center lines to check for proper alignment.
- 2.6. After the first tile is in place, begin laying tiles outward along both guidelines.
- 2.7. Install tiles in the same direction (see arrows on the back of the tiles.)
- 2.8. Press tiles **lightly** against adjoining tiles and press into the adhesive.
- 2.9. Begin stair-stepping the tiles into the field area.



3. SEQUENCE OF TILES

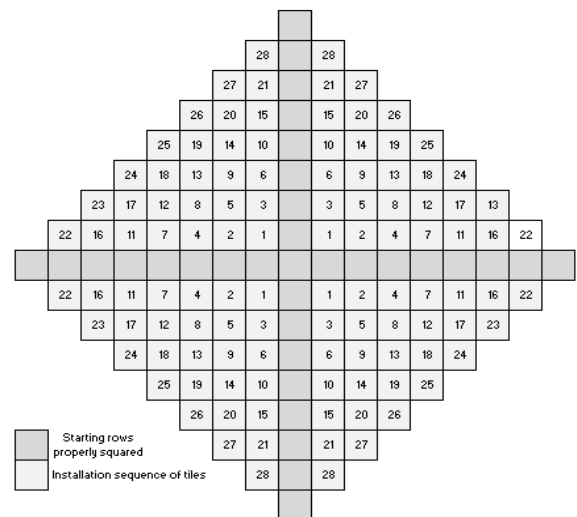
- 3.1. Follow the installation sequence to avoid tile run off.

4. CUTTING IRREGULAR SHAPES AND THE PERIMETERS

- 4.1. For doorjambes or other irregular cuts, mark tiles with a pencil, heat with a hot air gun, and cut with a sharp utility blade. The tiles will cut easily when heated sufficiently. Pattern/scribing paper can also be used for fitting irregular shapes.
- 4.1. The perimeter cuts can be made with a table saw and fine-tooth blade.
- 4.2. A D Cut LP-650 cutter is highly recommended to ease the process of perimeter cuts:

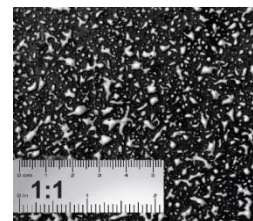
D Cut Products, Inc. Model: LP 650

www.dcutproducts.com/lp650.html



5. INSTALLING USING GERFIX SPRAY ADHESIVE

- 5.1. Always refer to the **Gerfix Spray Adhesive Technical Data Sheet**
- 5.2. Recommended spray pattern: (150 to 185 sq. ft. per can)
- 5.3. Ensure substrate, flooring, and surrounding areas are clean and dust free.
- 5.4. Wipe hand across surface to verify for dust.
- 5.5. If dust transfers, substrate is not clean.
- 5.6. Damp-mop substrate if dust is present.
- 5.7. Protect from overspray with a spray shield, drop cloths, paper, or masking tape.



INSTALLATION INSTRUCTIONS

GERFLOR GTI MAX CLEANTECH CLEANROOM

- 5.8. Shake aerosol can well. Remove white cap.
- 5.9. To ensure uniform adhesion of the entire surface, spray a workable amount of adhesive at one time.
- 5.10. Stand straight up to spray. Hold can upside down, approximately 20-30 inches horizontally from the substrate, aim at floor and press tip with finger.
- 5.11. Walk right to left smoothly to achieve results as seen on photo.
- 5.12. Adhesive should spray out in a wide mist and fall like snow.
- 5.13. Spraying in a sweeping motion may result in an inconsistent spray pattern.
- 5.14. Excess buildup or inconsistent spray pattern on substrate may cause telegraphing.
- 5.15. Avoid extremely heavy application.
- 5.16. To ensure optimal spray pattern, remove any adhesive build up that may occur during the application process.
- 5.17. If overspray occurs, it may be removed with a damp cloth while the adhesive is still wet.
- 5.18. Once the adhesive is dry to the touch, immediately install the flooring. While open, ensure that adhesive is not contaminated by dust.
- 5.19. Starting from the center line and working outward, apply the adhesive and install tiles when the adhesive is ready.
- 5.20. Press tiles lightly against adjoining tiles and press into the adhesive.
- 5.21. Roll flooring with a 3 section 100-lbs roller within 1 hour after installation to complete the bonding process.
- 5.22. Always roll seams, at the walls, and under toe kicks with a hand roller to ensure 100% transfer of adhesive.
- 5.23. **Floor is open to all traffic immediately after installation.**



6. INSTALLING USING GERFIX TPS+ ACRYLIC ADHESIVE

- 6.1. Always refer to the **Gerfix TPS+ Adhesive Technical data Sheet**
- 6.2. Recommended trowel size is 1/32" x 1/16" x 1/32", covering from 170 to 220 sq. ft. per US gallon.
- 6.3. To ensure uniform adhesion of the entire surface, apply a workable amount of adhesive at one time.
- 6.4. Maintain a uniform spread rate. Replace trowel (or trowel blade) with every pail used.
- 6.5. Immediately after troweling the adhesive onto the concrete use a medium napped paint roller saturated with adhesive to flatten out visible trowel marks and even out the adhesive. **A double arm roller frame is recommended to ensure an even coat of adhesive.**
- 6.6. "Open time" of the adhesive is dependent upon porosity of the substrate, temperature, and humidity. It is important that the installers familiarize themselves with the adhesive before starting the installations.

INSTALLATION INSTRUCTIONS

GERFLOR GTI MAX CLEANTECH CLEANROOM

Application Characteristics over Porous Substrates (Non-Porous-see note below)		
	Open Time*	Working Time**
Gerflor GTI Max Cleanroom Tiles	20 to 40 minutes (to reach a tacky state***)	Up to 1.5 hours

* **Open Time:** is the wait time required before installing flooring inot the adhesive.


** **Working time:** is the wait time required before installing flooring inot the adhesive.

*** **Tacky:** When adhesive starts to becomes translucent and there is light transfer to the fingers when slightly touched resulting in transfer to the backing of the flooring.

Note: For Non-Porous substrates such as esisting flooring or metal, let the adhesive dry completely, with NO transfer to the fingers when touched, then immediately install the flooring and roll with a 100lb. roller.

- 6.7. Starting from the center line and working outward, apply the adhesive and install tiles when the adhesive is ready.
- 6.8. Press tiles lightly against adjoining tiles and press into the adhesive.
- 6.9. Periodically, lift the edge of a tile to confirm transfer of adhesive to the back of the flooring. There must be adhesive transfer for the tiles to be adequately secured to the substrate.
- 6.10. Once flooring is placed into the adhesive, immediately roll thoroughly with a 3 section 100-lbs roller in both directions.
- 6.11. Always roll seams, at the walls, and under toe kicks with a hand roller to ensure 100% transfer of adhesive.
- 6.12. During the installation, with the lights on and off, always double check the flooring for bubbles with portable, ambient, and/or fixed lighting.
- 6.13. **Avoid adhesive displacement by prohibiting traffic for a period of 24 hours and 72 hours for rolling loads.**

7. INSTALLING USING GERFIX 100 ADHESIVE

- 7.1. Always refer to the **Gerfix 100 Adhesive Technical Data Sheet**.
- 7.2. Follow the guidelines indicated on the Technical Data Sheet.
- 7.3. Recommended trowel size is 1/32" x 1/16" x 1/32", covering from 170 to 220 sq. ft. per US gallon. 
- 7.4. To ensure uniform adhesion of the entire surface, apply a workable amount of adhesive at one time.
- 7.5. Maintain a uniform spread rate. Replace trowel (or trowel blade) with every pail used.

Application Characteristics over Porous Substrates "ONLY"		
	Open Time*	Working Time**
GTI, Attraction, & Creation Connect Tiles	10 minutes (Do not allow adhesive to completely dry)	Up to 45 minutes

* **Open Time:** is the wait time required before installing flooring inot the adhesive.

** **Working time:** is the wait time required before installing flooring inot the adhesive.

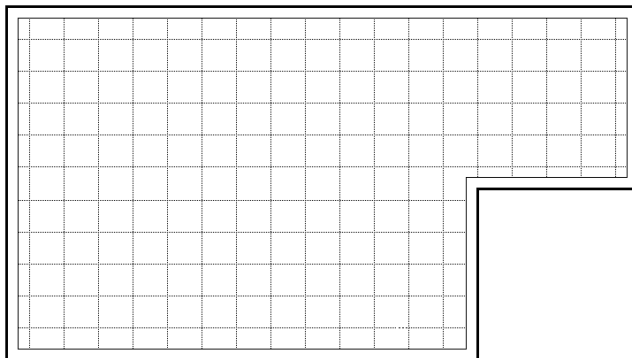
INSTALLATION INSTRUCTIONS

GERFLOR GTI MAX CLEANTECH CLEANROOM

- 7.6. Wait 10 minutes after spreading the adhesive to build surface tack and reduce movement
- 7.7. The **use of kneeling boards is mandatory** when working on top of freshly installed flooring
- 7.8. Starting from the center line and working outward, apply the adhesive and install tiles when the adhesive is ready.
- 7.9. Press tiles firmly against adjoining tiles and press into the adhesive.
- 7.10. **Roll the flooring as it is installed using a 3-section hand roller and normal pressure**
- 7.11. Periodically, lift the edge of a tile to confirm 100% transfer of adhesive to the back of the flooring. There must be adhesive transfer for the tiles to be adequately secured to the substrate.
- 7.12. **Once flooring is placed into the adhesive, wait a minimum of one hour, but no more than two, and roll thoroughly with a 3 section 100-lbs steel roller in both directions.**
- 7.13. Always roll seams, at the walls, and under toe kicks with a hand roller to ensure 100% transfer of adhesive.
- 7.14. Use mineral spirits to remove fresh or dried adhesive from the surface of the flooring
- 7.15. **Avoid adhesive displacement by prohibiting traffic for a period of 6 hours for light traffic, and 8 hours for heavy static & dynamic loads**
- 7.16. Following the above steps is of the utmost importance for a successful installation that will resist high moisture levels and be serviceable over the life of the floor.

8. FLASHCOVING GTI CLEANTECH CLEANROOM

- 8.1. Measure and cut GTI tiles 4 inches from all perimeter walls.
- 8.2. If SPM wall panels are to be installed, the wall panels should be installed first and then the flooring. Eliminate the cove cap and underscribe the vinyl to the wall panels to ensure evenly spaced seams for welding.



INSTALLATION INSTRUCTIONS

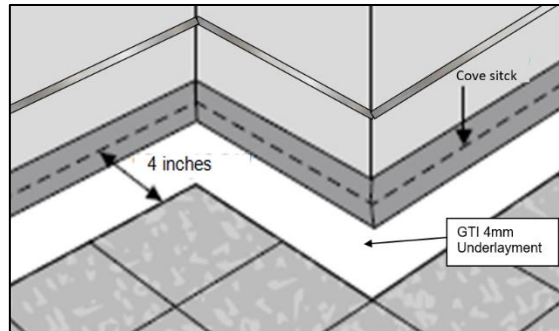
GERFLOR GTI MAX CLEANTECH CLEANROOM

8.3. On the 4" edge of the perimeter, install Gerflor 4mm GTI Underlayment and then install the cove stick on top of it. (Use same adhesive as used to install the flooring.)

8.4. Measure height for cap metal and install.

8.5. Metal cap is preferred over vinyl.

8.6. Cut the homogeneous sheet to the desired size to complete the flashcoving.



8.7. Apply adhesive and install the pieces of homogeneous sheet to the floor and wall, being careful to ensure it is tight in the cove stick.

8.8. Miter the inside and outside corner seams and cut the vinyl net with the walls vertically on the corners. This flashcoving method is sometimes called picture framing, or border coving.

8.9. Roll floor, cove radius, and walls with hand roller to ensure proper bonding.

8.10. Weld all vertical and corner seams and trim with hand tools.

9. CLEAN CORNER INSTALLATION – REFER TO THE “CLEAN CORNER” DOCUMENT

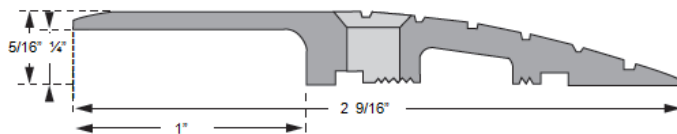
9.1. When installing the Clean Corner system, and to achieve the inside and outside corners, a minimum of 12" pieces of vinyl will need to be cut and used to fill in each corner.

9.2. Fit piece in the corner by butting up squarely to the GTI tiles. Heat with hot air gun, fold back and install per the Clean Corner Installation Document.

9.3. After fitting the inside and outside corner pieces, measure distance of walls between each corner and install the appropriate size pieces of sheet vinyl. Make clean vertical seams between the inside and outside corner pieces.

10. DOORWAYS AND TERMINATIONS

10.1. ALUMINUM PROFILE



10.2. For heavy traffic and can be used for GTI or Attraction tiles. (Premade corner pieces are also available.)

10.3. 4mm x 50mm and 30mm long nylon plugs are included in profile kit.

10.4. Cut tiles and lay metal at desire location.

10.5. Hold metal securely and use hammer to drill 3mm pilot holes through the center of each hole.

10.6. Remove metal and finish holes with 6mm drill bit.

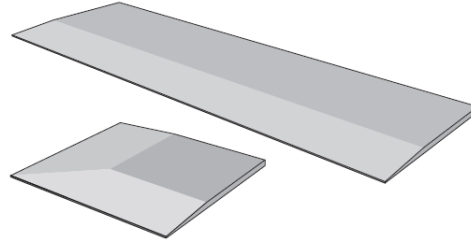
10.7. Vacuum holes and insert nylon plugs

10.8. Realign metal and secure with 4mm x 50mm screws and Philipps screwdriver

INSTALLATION INSTRUCTIONS
GERFLOR GTI MAX CLEANTECH CLEANROOM

10.9. GTI ACCESS AND CORNER PIECES

- 10.10.** For moderate traffic
- 10.11.** Must be glued down using T-111 adhesive
- 10.12.** Weight down until adhesive cures



11. HEAT WELDING - REFER TO THE “HEAT WELDING GERFLOR VINYL PRODUCTS” DOCUMENT

12. ONCE THE INSTALLATION IS COMPLETED

- 12.1.** Perform a visual inspection of the project.
- 12.2.** Verify every welded seam.
- 12.3.** Repair every imperfection before leaving the project.
- 12.4.** Make sure that every vertical obstacle such as doorframes are well trimmed and sealed with an acrylic, silicone, or equivalent sealant product.
- 12.5.** To maximize the aesthetic appearance and serviceability of the newly installed flooring, provide your customer with a copy of the **Gerflor USA Maintenance Instructions**.