



New collection

200 references
4 technologies

All in 1

Creation 55

The Reference in LVT

Gerflor[®]

New Creation 55 Collection

200 references
60 designs
All in 1



New designs

- 20 new exclusive designs
- Emboss in register (EIR)*
- Customize your Creation 55 with *MyCreation***



Herringbone formats

- Creation Dry Back: 152x762mm
- Creation Rigid Acoustic: 125x750mm

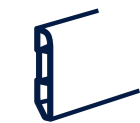
38
CORE
DESIGNS

Core Designs

- 38 designs available in all installation systems (DB, Solid Clic, Rigid AC)



New interlocking offer



Complete solution

- Underlayers, matting, matching skirtings and coverstrips



100% in stock



BALLERINA



FABRIK MIX JUTE

European LVT manufacturer since 1985



4 LVT Factories > Manufacturer



12 Logistics Hubs > Stock in Europe



Internal Design Center > Exclusive designs

Gerflor The Reference!

* EIR pricing: contact your sales representative

** For more information please contact your sales representative.



MANSFIELD LIGHT



RANCH



OXFORD



PAINT WOOD TAUPE



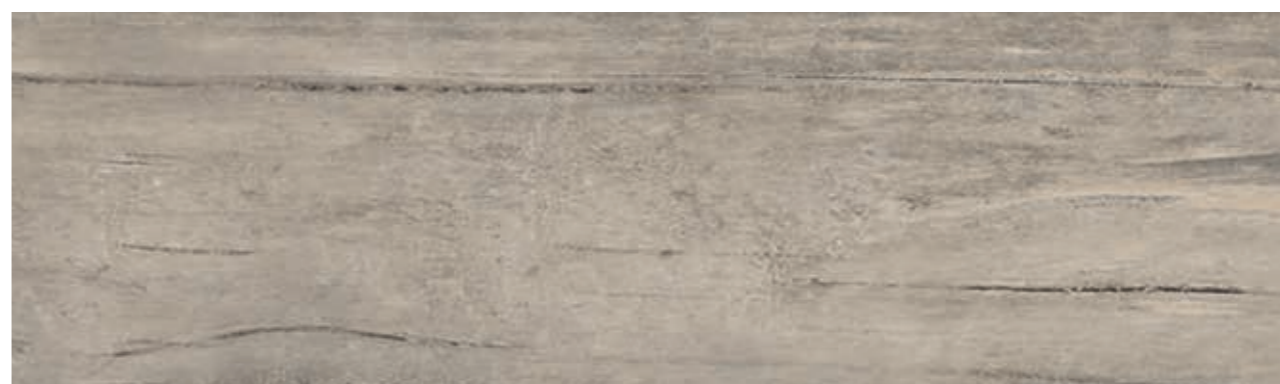
OXFORD 0061

DB 184 x 1219 | **SOLID CLIC** 212 x 1239 | 



RANCH 0456

DB ^{184 x 1219}/_{230 x 1500} | **SOLID CLIC** ^{212 x 1239}/_{240 x 1461} | **RIGID AC** 177 x 1219 | **LL** 229 x 1220 | **LL AC** 229 x 1220 | 



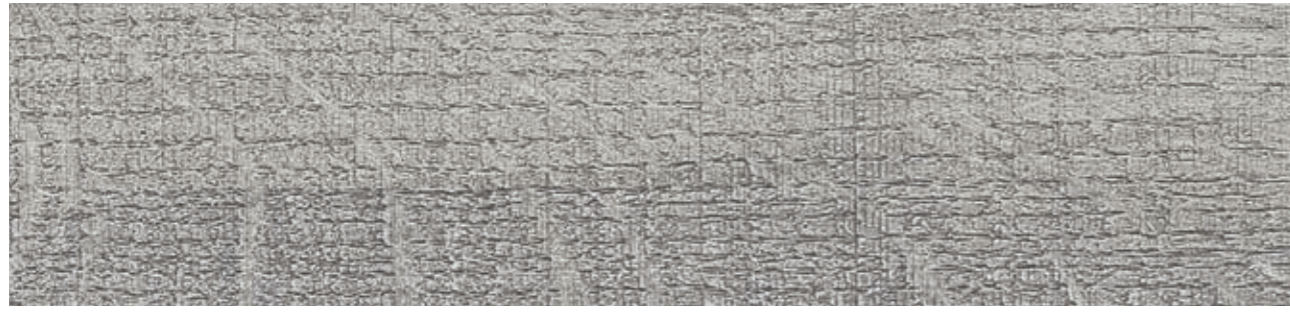
PAINT WOOD TAUPE 0856

DB 184 x 1219 | **SOLID CLIC** 212 x 1239 | 

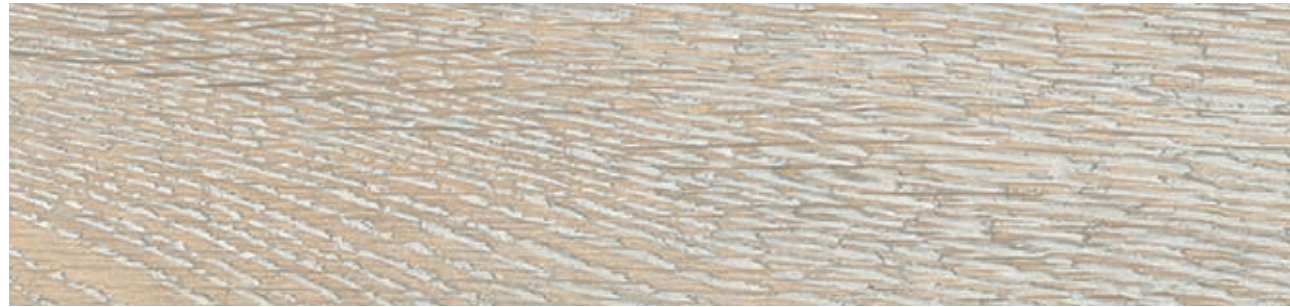


MANSFIELD LIGHT 0068

DB 184 x 1219 | 



SWISS OAK PEARL 0846 | DB 184 x 1219 | **SOLID CLIC** 212 x 1239 | **RIGID AC** 177 x 1219 | LL 229 x 1220 | **LL AC** 229 x 1220 |



WHITE LIME 0584 | DB 184 x 1219 | **SOLID CLIC** 212 x 1239 | **RIGID AC** 177 x 1219 |



BOSTONIAN OAK BEIGE 0853 | DB 184 x 1219 | 152 x 762 | **SOLID CLIC** 212 x 1239 | **RIGID AC** 177 x 1219 | LL 229 x 1220 |



ARENA 0060 | DB 184 x 1219 | **SOLID CLIC** 212 x 1239 | LL 229 x 1220 | **LL AC** 229 x 1220 |



STRIPE OAK ICE 0858 | DB 184 x 1219 | **SOLID CLIC** 212 x 1239 |

DESIGN SHADE VARIATION Light Medium High



BOSTONIAN OAK BEIGE



SWISS OAK PEARL



ARENA



STRIPE OAK ICE



WHITE LIME



SALENTO BEIGE



SALENTO BEIGE 1286

DB 184 x 1219 | **SOLID CLIC** 212 x 1239 | **RIGID AC** 177 x 1219 |



MALUA BAY 0448

DB 184 x 1219 | **SOLID CLIC** 212 x 1239 | **RIGID AC** 177 x 1219 | **LL** 229 x 1220 | **LL AC** 229 x 1220 |



CEDAR PURE 0849

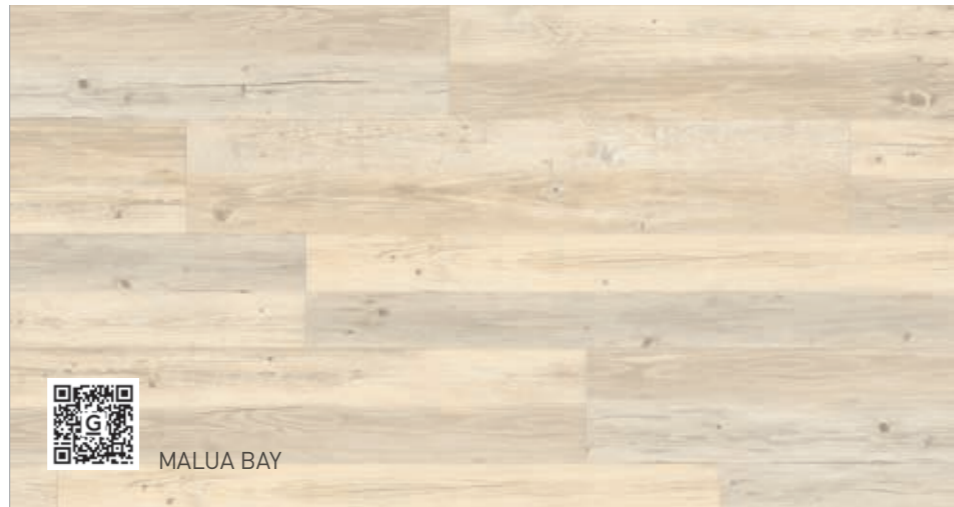
DB 230 x 1500 | **SOLID CLIC** 240 x 1461 | **RIGID AC** 225 x 1524 |



SALENTO LIGHT GREY



CEDAR PURE



MALUA BAY



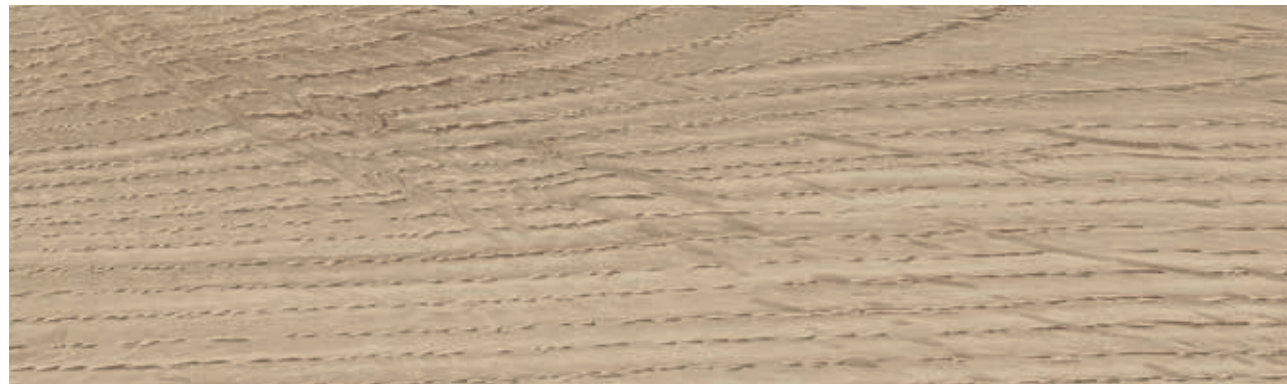
SALENTO LIGHT GREY 1287

DB 184 x 1219 | **SOLID CLIC** 212 x 1239 | **RIGID AC** 177 x 1219 |



MANSFIELD NATURAL 0069

DB 184 x 1219 



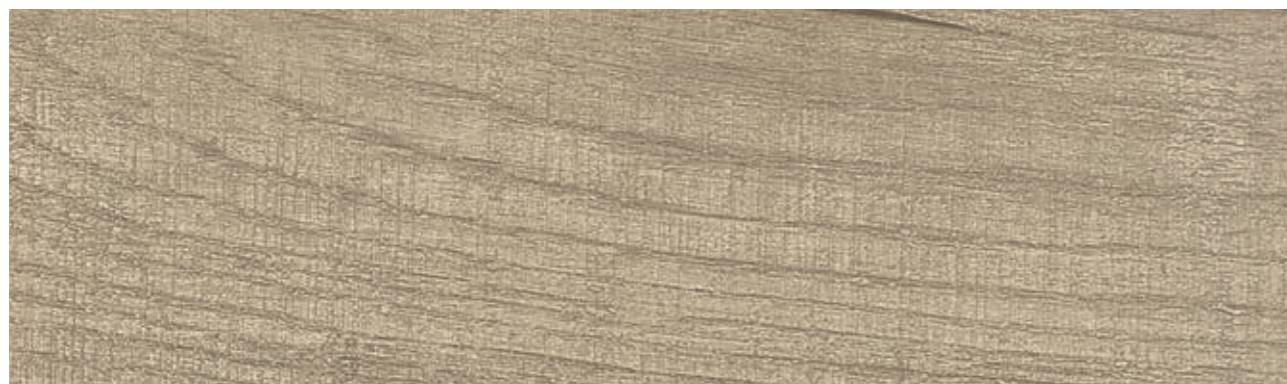
TWIST 0504

DB 184 x 1219 | 152 x 762 | **SOLID CLIC** 212 x 1239 | **RIGID AC** 177 x 1219 | **LL** 229 x 1220 | **LL AC** 229 x 1220 



CAMBRIDGE 0465

DB 184 x 1219 | **SOLID CLIC** 212 x 1239 



SWISS OAK BEIGE 0848

DB 184 x 1219 | **SOLID CLIC** 212 x 1239 | **RIGID AC** 177 x 1219 

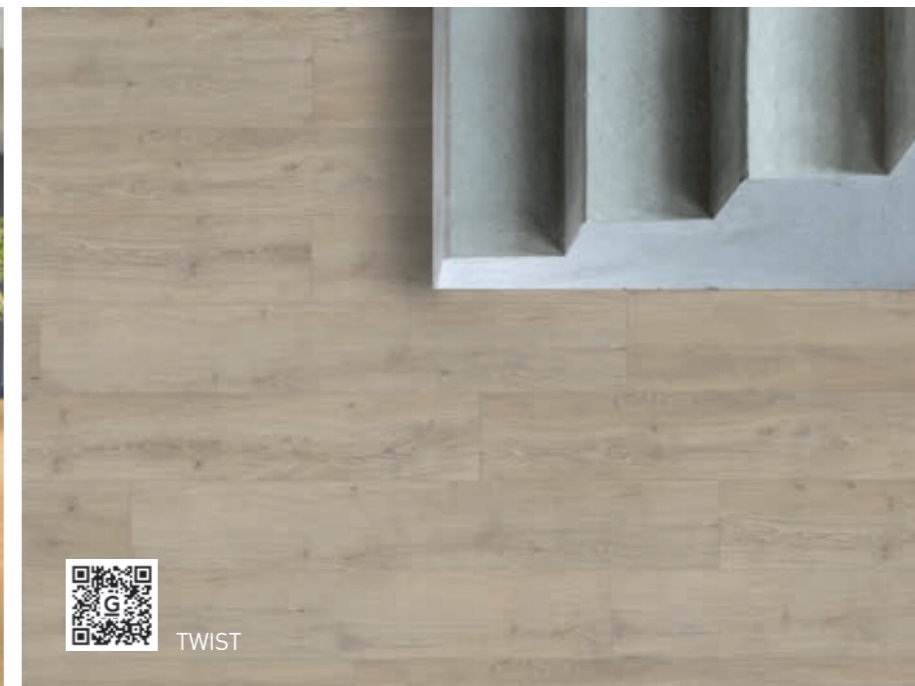
DESIGN SHADE VARIATION  Light  Medium  High



MANSFIELD NATURAL



CAMBRIDGE



TWIST



SWISS OAK BEIGE



BOSTONIAN OAK HONEY



BOSTONIAN OAK HONEY 0851

DB 184 x 1219 | **SOLID CLIC** 212 x 1239 | **RIGID AC** 177 x 1219 | 



BALLERINA



LONG BOARD



LONG BOARD 0455

DB 184 x 1219 | **SOLID CLIC** 212 x 1239 | **RIGID AC** 177 x 1219 | **LL** 229 x 1220 | **LL AC** 229 x 1220 | 



RUSTIC OAK



BALLERINA 0347

DB 184 x 1219 | 152 x 762 | **SOLID CLIC** 212 x 1239 | **RIGID AC** 125 x 750 | 177 x 1219 | **LL** 229 x 1220 | **LL AC** 229 x 1220 | 




RUSTIC OAK 0445

DB 184 x 1219 | **SOLID CLIC** 212 x 1239 | **RIGID AC** 177 x 1219 | 

CREATION 55 HB 



QUARTET 0503 DB 152 x 762 RIGID AC 125 x 750 



QUARTET FAUVE 0859 DB 152 x 762 



BALLERINA 0347 DB 152 x 762 RIGID AC 125 x 750 



TWIST 0504 DB 152 x 762 



BOSTONIAN OAK BEIGE 0853 DB 152 x 762 



BOSTONIAN OAK BEIGE



TWIST



QUARTET & QUARTET FAUVE



BALLERINA



QUARTET FAUVE



HONEY OAK / CARMEL



SWISS OAK GOLDEN



QUARTET FAUVE



QUARTET HONEY



QUARTET HONEY 0870

DB 184 x 1219 | **SOLID CLIC** 212 x 1239 | **RIGID AC** 177 x 1219 | **LL** 229 x 1220



QUARTET FAUVE 0859

DB 184 x 1219
152 x 762 | **SOLID CLIC** 212 x 1239 | **RIGID AC** 177 x 1219 | **LL** 229 x 1220



SWISS OAK GOLDEN 0796

DB 184 x 1219 | **SOLID CLIC** 212 x 1239 | **RIGID AC** 177 x 1219 | **LL** 229 x 1220 | **LL AC** 229 x 1220



HONEY OAK 0441

DB 184 x 1219 | **SOLID CLIC** 212 x 1239 | **RIGID AC** 177 x 1219 | **LL** 229 x 1220 | **LL AC** 229 x 1220

DESIGN SHADE VARIATION

Light Medium High



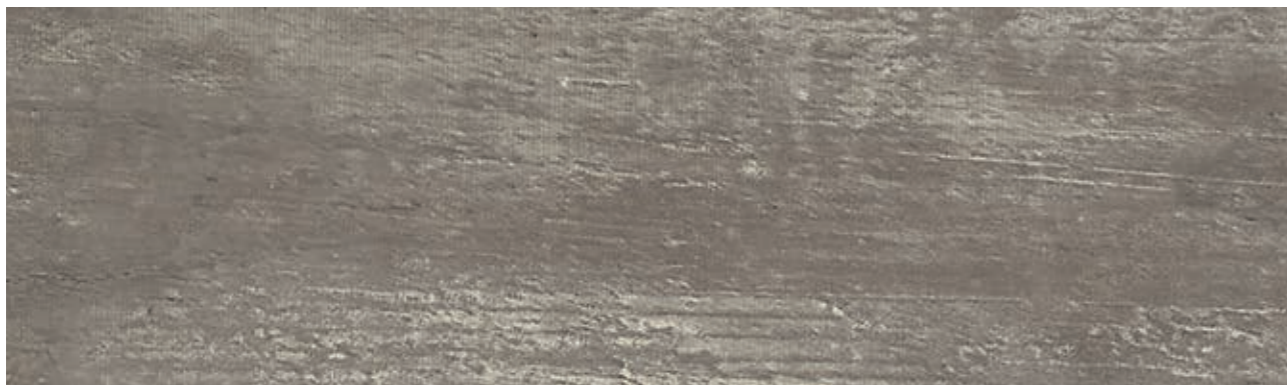
BUFFALO 0457

DB 184 x 1219 | **SOLID CLIC** 212 x 1239 |



AMARANTE 0579

DB 184 x 1219 |



AMADOR 0447

DB 184 x 1219 | **SOLID CLIC** 212 x 1239 | **RIGID AC** 177 x 1219 | **LL AC** 229 x 1220 | **LL AC** 229 x 1220 |



CEDAR BROWN 0850

DB 230 x 1500 | **SOLID CLIC** 240 x 1461 | **RIGID AC** 225 x 1524 |



BUFFALO



CEDAR BROWN



AMADOR



AMARANTE



BROWNIE



QUARTET



BOSTONIAN OAK



MICHIGAN



BROWNIE 0459

DB 184 x 1219



BOSTONIAN OAK 0871

DB 184 x 1219

SOLID CLIC 212 x 1239

RIGID AC 177 x 1219

LL 229 x 1220



MICHIGAN 0461

DB 184 x 1219

SOLID CLIC 212 x 1239

RIGID AC 177 x 1219



QUARTET 0503

DB 184 x 1219
152 x 762

SOLID CLIC 212 x 1239

RIGID AC 125 x 750
177 x 1219



DESIGN SHADE VARIATION



Light



Medium




High



EIR : EMBOSS IN REGISTER



WHITE LEAD OAK DARK BEIGE 1289

DB 184 x 1219 




WHITE LEAD OAK BLOND 1288

DB 184 x 1219 



WHITE LEAD OAK SHADOW GREY 1290

DB 184 x 1219 

DESIGN SHADE VARIATION  Light  Medium  High

* EIR pricing: contact your sales representative



WHITE LEAD OAK BLOND



WHITE LEAD OAK DARK BEIGE



WHITE LEAD OAK SHADOW GREY



LOUNGE OAK BEIGE



LOUNGE OAK GOLDEN



LOUNGE OAK CHESTNUT



CREATION 55 EIR*



LOUNGE OAK CHESTNUT 1274

DB 230 x 1500 | **SOLID CLIC**** 240 x 1461 | **RIGID AC** 225 x 1524 | 



LOUNGE OAK GOLDEN 1271

DB 230 x 1500 | **SOLID CLIC**** 240 x 1461 | **RIGID AC** 225 x 1524 | 



LOUNGE OAK NATURAL 1273

DB 230 x 1500 | **SOLID CLIC**** 240 x 1461 | **RIGID AC** 225 x 1524 | 



LOUNGE OAK BEIGE 1272

DB 230 x 1500 | **SOLID CLIC**** 240 x 1461 | **RIGID AC** 225 x 1524 | 



LOUNGE OAK NATURAL



DESIGN SHADE VARIATION  Light  Medium  High

* EIR pricing: contact your sales representative
** Available with classic emboss in 2022. Available with EIR in 2023



CHARMING OAK BROWN 1280 | DB 184 x 1219 | SOLID CLIC** 212 x 1239 | RIGID AC 177 x 1219



CHARMING OAK NATURE 1277 | DB 184 x 1219 | SOLID CLIC** 212 x 1239 | RIGID AC 177 x 1219



CHARMING OAK BEIGE 1278 | DB 184 x 1219 | SOLID CLIC** 212 x 1239 | RIGID AC 177 x 1219



CHARMING OAK GREY 1279 | DB 184 x 1219 | SOLID CLIC** 212 x 1239 | RIGID AC 177 x 1219



CHARMING OAK GREY



CHARMING OAK BEIGE



CHARMING OAK NATURE



CHARMING OAK BROWN

* EIR pricing: contact your sales representative
 ** Available with classic emboss in 2022. Available with EIR in 2023



PALISSANDRO GREY



PALISSANDRO BEIGE 1282

DB 230 x 1500 | **SOLID CLIC** 240 x 1461



PALISSANDRO GREY 1281

DB 230 x 1500 | **SOLID CLIC** 240 x 1461



CURTON STONE LIGHT BEIGE



PALISSANDRO BEIGE



URBAN STREET BEIGE



URBAN STREET BEIGE 1285
DB 914 x 914



CURTON STONE LIGHT BEIGE 1276
DB 457 x 914 | **SOLID CLIC** 389 x 729 | **RIGID AC** 457 x 914



DESIGN SHADE VARIATION  Light  Medium  High



CURTON STONE LIGHT GREY 1275
457 x 914 | **SOLID CLIC** 389 x 729 | **RIGID AC** 457 x 914



FABRIK MIX JUTE 1268
DB 610 x 610 | **SOLID CLIC** 389 x 729



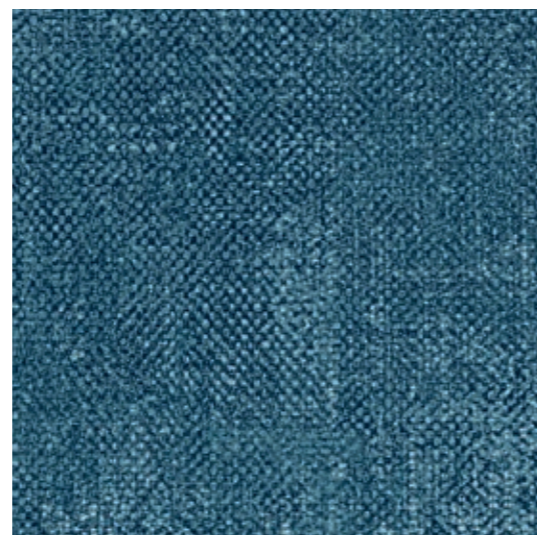
 CARMEL



 CURTON STONE LIGHT GREY




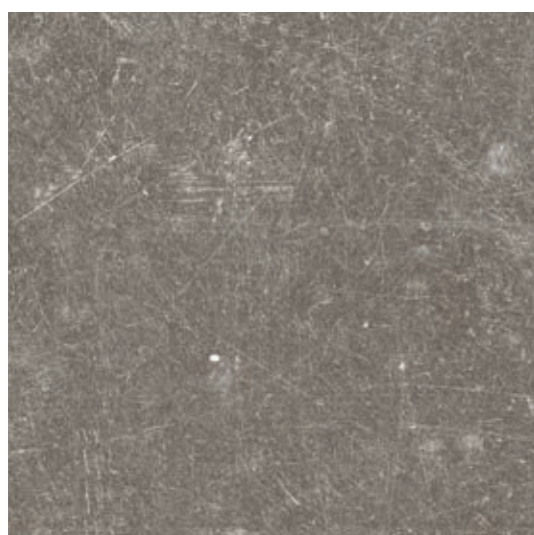
BLOOM UNI TAUPE 0868
610 x 610 | **SOLID CLIC** 389 x 729
RIGID AC 457 x 914 | **LL** 600 x 600



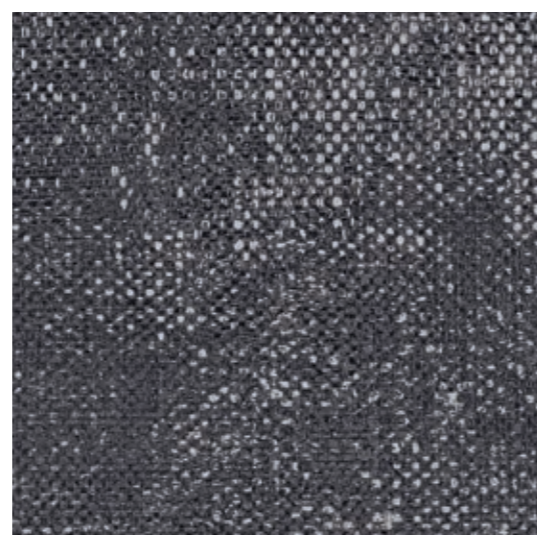
FABRIK MIX INDIGO 1270
DB 610 x 610 | **LL** 600 x 600



 BLOOM UNI TAUPE




CARMEL 0618
457 x 914 | **SOLID CLIC** 389 x 729
RIGID AC 457 x 914 | **LL** 500 x 500 | **LL AC** 500 x 500



FABRIK MIX DARK GREY 1269
DB 610 x 610 | **SOLID CLIC** 389 x 729
LL 600 x 600




 FABRIK MIX JUTE



 FABRIK MIX INDIGO



 FABRIK MIX DARK GREY

DESIGN SHADE VARIATION  Light  Medium  High



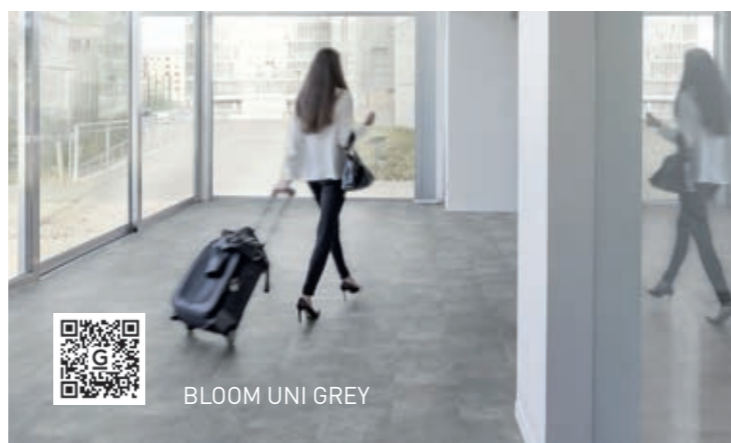
URBAN STREET MEDIUM



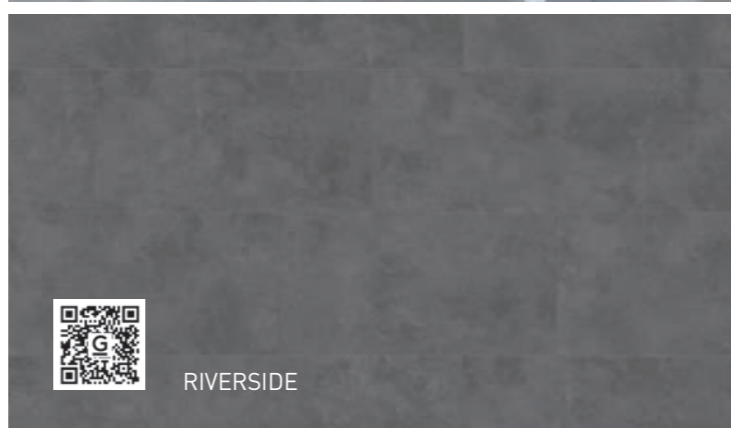
URBAN STREET LIGHT



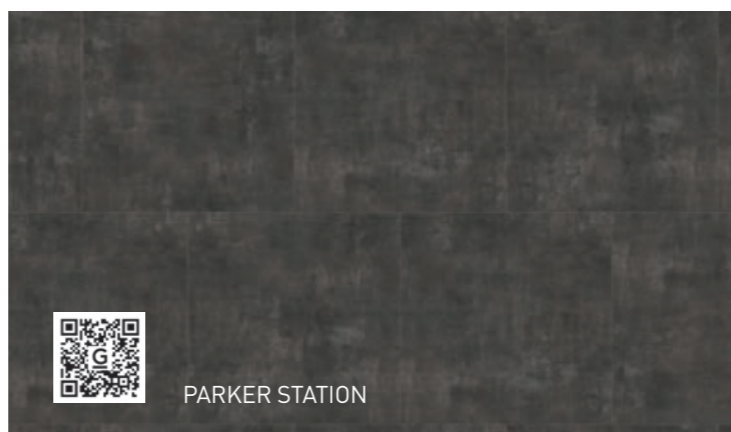
SILVER CITY



BLOOM UNI GREY



RIVERSIDE



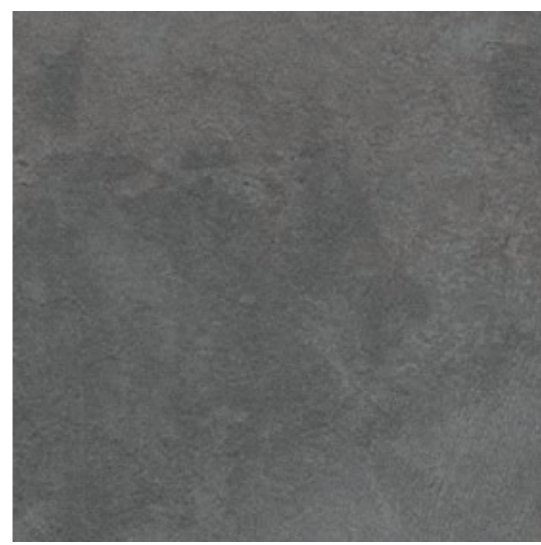
PARKER STATION



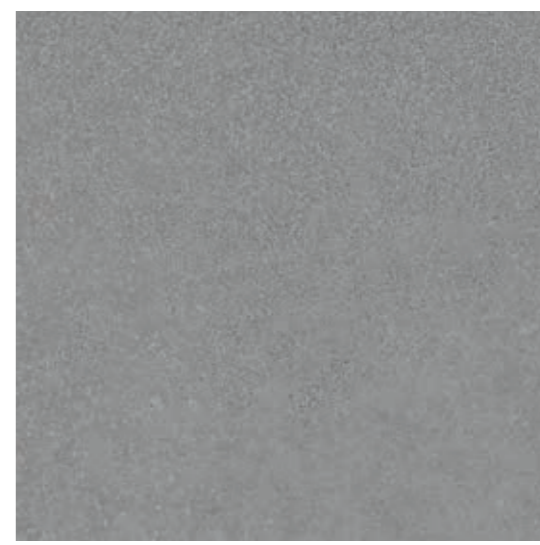
SILVER CITY 0373
DB 610 x 610



PARKER STATION 0374
DB 610 x 610 | **SOLID CLIC** 389 x 729
RIGID AC 457 x 914 | LL 500 x 500 | LL AC 500 x 500



RIVERSIDE 0436
DB 610 x 610 | **SOLID CLIC** 389 x 729
RIGID AC 457 x 914 | LL 600 x 600



URBAN STREET MEDIUM 1284
DB 914 x 914 | **SOLID CLIC** 389 x 729
LL 600 x 600



BLOOM UNI GREY 0869
DB 610 x 610 | **SOLID CLIC** 389 x 729



URBAN STREET LIGHT 1283
DB 914 x 914 | **SOLID CLIC** 389 x 729



NIVEAU DE CONTRASTE DU DÉCOR /
DESIGN SHADE VARIATION: Léger / Light Moyen / Medium Fort / High

Creation 55

Exclusive by Gerflor

4 technologies
5 products

All in 1

Dry Back
Solid Clic
Rigid Acoustic
Looselay
Looselay Acoustic

Color Design



Amador	■	■	■	■	■
Amarante	■				
Arena	■	■		■	■
Ballerina	■	■	■	■	■
Bloom Uni Grey	■	■	■	■	
Bloom Uni Taupe	■	■	■	■	
Bostonian Oak	■	■	■	■	
Bostonian Oak Beige	■	■	■	■	
Bostonian Oak Honey	■	■	■		
Brownie	■				
Buffalo	■	■			
Cambridge	■	■			
Carmel	■	■	■	■	■
Cedar Brown	■	■	■		
Cedar Pure	■	■	■		
Charming Oak Beige	■	■	■		
Charming Oak Brown	■	■	■		
Charming Oak Grey	■	■	■		
Charming Oak Nature	■	■	■		
Curton Stone Light Beige	■	■	■		
Curton Stone Light Grey	■	■	■		
Fabrik Mix Dark Grey	■	■		■	
Fabrik Mix Indigo	■	■		■	
Fabrik Mix Jute	■	■			
Honey Oak	■	■	■	■	■
Long Board	■	■	■	■	■
Lounge Oak Beige	■	■	■		
Lounge Oak Chestnut	■	■	■		
Lounge Oak Golden	■	■	■		
Lounge Oak Natural	■	■	■		
Malua Bay	■	■	■	■	■
Mansfield Light	■				
Mansfield Natural	■				
Michigan	■	■	■		
Oxford	■	■			
Paint Wood Taupe	■	■			
Palissandro Beige	■	■			
Palissandro Grey	■	■			
Parker Station	■	■	■	■	■
Quartet	■	■	■		
Quartet Fauve	■	■	■	■	
Quartet Honey	■	■	■	■	
Ranch	■	■	■	■	■
Riverside	■	■	■	■	
Rustic Oak	■	■	■		
Salento Beige	■	■	■		
Salento Light Grey	■	■	■		
Silver City	■				
Stripe Oak Ice	■	■			
Swiss Oak Beige	■	■	■		
Swiss Oak Golden	■	■	■	■	■
Swiss Oak Pearl	■	■	■	■	■
Twist	■	■	■	■	■
Urban Street Beige	■				
Urban Street Light	■	■		■	
Urban Street Medium	■	■	■		
White Lead Oak Blond	■				
White Lead Oak Dark Beige	■				
White Lead Oak	■				
Shadow Grey	■				
White Lime	■	■	■		

■ : Available

More details, LRV/NCS on gerflor.com

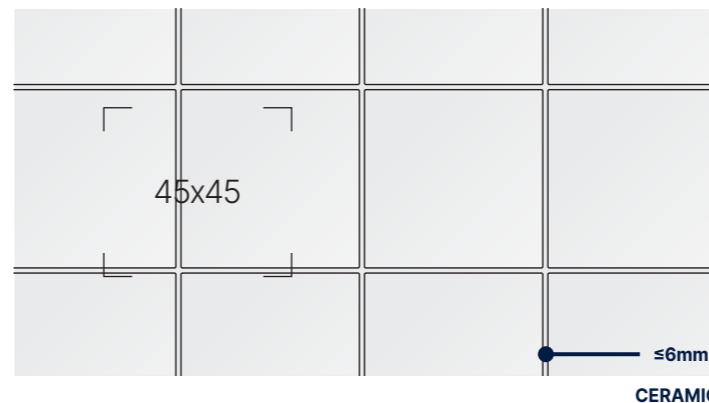


Creation 55 Solid Clic

- Duocore 2.0: New rigid core
- Exclusive Clic - Ideal for renovation
- Acoustic and walking comfort

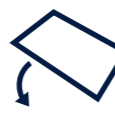
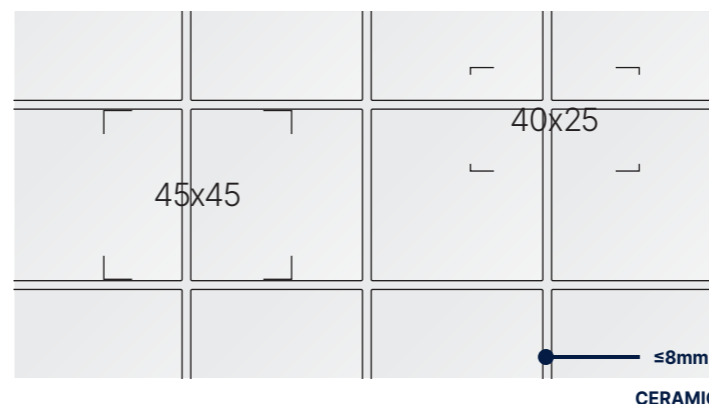


Think about Gerflor acoustic underlayers



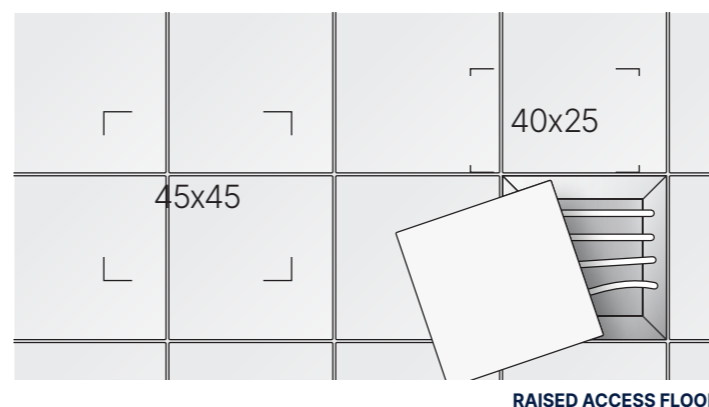
Creation 55 Rigid Acoustic

- Ideal for Heavy Renovation
- Integrated acoustic backing



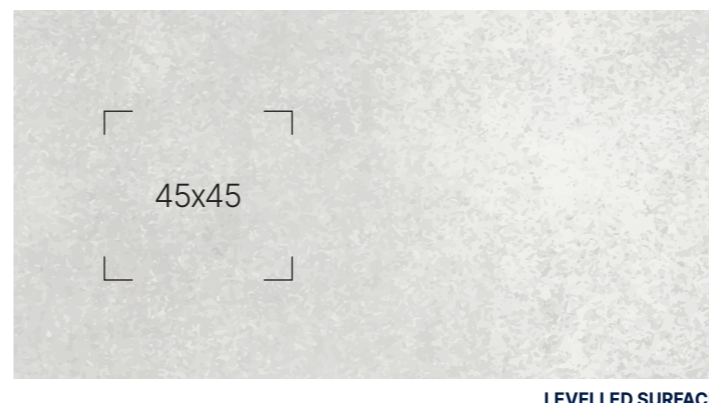
Creation 55 Looselay, Creation 55 Looselay Acoustic

- Removable installation
ideal for raised access floors
- Mix & match Designs!
- For acoustic offer: 19dB



Creation 55

- Ideal for New build
- Largest choice of designs
Mix & Match



Think about Gerflor acoustic underlayers

Refer to Gerflor Installation guidelines.

QR CODES

- Interior Designer
- Sample Order

Class 33

DB

Creation 55 (Dry Back)

SOLID CLIC

Creation 55 Solid Clic

RIGID AC

Creation 55 Rigid Acoustic

LL

Creation 55 Looselay

LL AC

Creation 55 Looselay
Acoustic

PACKAGING

Format (mm)	m ² /box	m ² /pallet
Creation 55		
184.15 x 1219.2	3.36	215.04
230 x 1500	3.11	214.59
152 x 762	3.82	213.92
457.2 x 914.4	3.76	218.08
609.6 x 609.6	3.35	187.60
914.4 x 914.4	4.18	192.28
Creation 55 Solid Clic		
212 x 1238.8	1.84	104.88
239.6 x 1460.8	2.1	100.80
388.8 x 728.7	1.7	102
Creation 55 Rigid Acoustic		
125 x 750	1.50	84
177 x 1219	1.73	96.88
225 x 1524	1.71	92.34
457 x 914	1.67	93.52
Creation 55 Looselay		
229 x 1220	2.23	124.88
500 x 500	2	128
600 x 600	2.16	95.04
Creation 55 Looselay Acoustic		
229 x 1220	2.23	124.88
500 x 500	2	128

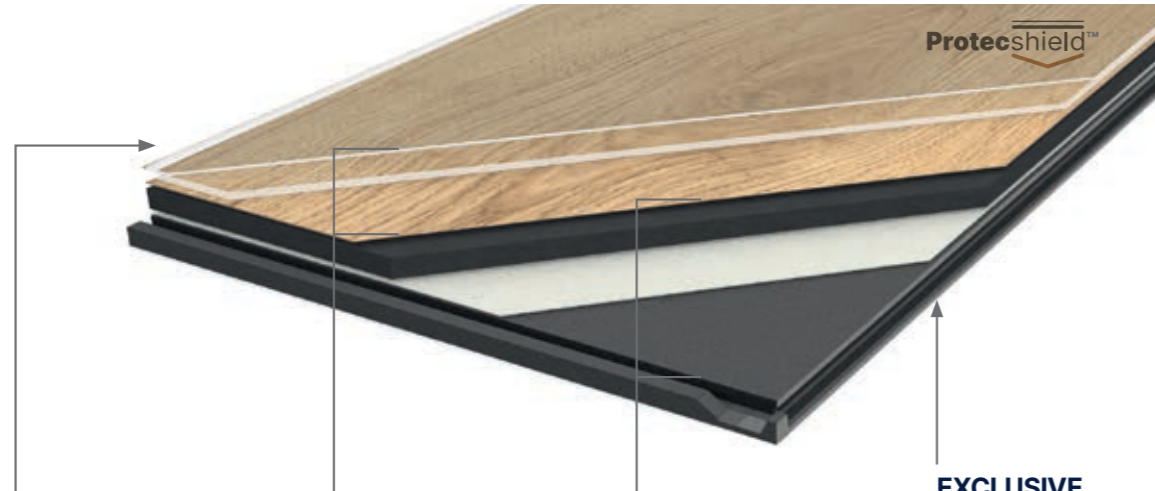
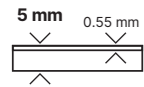
Protecshield™



MADE IN EUROPE

Creation 55 Solid Clic

Formats (mm) 212x1239 240x1461 389x729



PROTECSHIELD™

ENHANCED PERFORMANCES

Micro scratch resistance

Easy maintenance

ULTRA MATT SURFACE

Natural look

4D DESIGN

CRYSTAL WEAR LAYER

Authentic Look

HIGH DEFINITION PRINTED FILM

Ultra realism

STRUCTURED EMBOSS

Ultra realistic surface

BEVELLED EDGES

Tiles & Planks effect

DUOCORE 2.0 TECHNOLOGY

RESILIENT COMFORT CORE

Acoustic comfort

Walking comfort

NEW RIGID CORE

Renovation over ceramic tiles 6mm/2mm

Resistance against high temperature variation

EXCLUSIVE INTERLOCKING SYSTEM

ANGULAR ON LONG SIDE

Quiet installation

VERTICAL ON SHORT SIDE

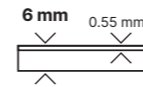
Traffic resistance Durability

Fast & easy to install

Waterproof Joints

Creation 55 Rigid Acoustic

Formats (mm) 177x1219 225x1524 125x750 457x914



PROTECSHIELD™

ENHANCED PERFORMANCES

Micro scratch resistance

Easy maintenance

ULTRA MATT SURFACE

Natural look

4D DESIGN

CRYSTAL WEAR LAYER

Authentic Look

HIGH DEFINITION PRINTED FILM

Ultra realism

STRUCTURED EMBOSS

Ultra realistic surface

BEVELLED EDGES

Tiles & Planks effect

RIGID CORE TECHNOLOGY



Renovation over ceramic tiles 8mm/3mm



Resistance against high temperature variation

INTEGRATED ACOUSTIC UNDERLAY

ACOUSTIC UNDERLAYER

Sound insulation 19dB



Absorbs default of the subfloor (up to 1mm unevenness)

INTERLOCKING SYSTEM

ANGLE TO ANGLE LOCKING SYSTEM

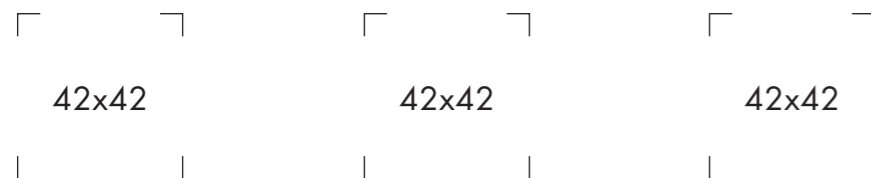
Standard laminate installation

To be combined with Gerflor acoustic underlayers

Gerflor Acoustic 15dB

Gerflor Acoustic Plus 19dB

Gerflor Silence Plus 19dB



Code: 1798 - Format: 1m x 151m

Code: 0704 - Format: 0.98m x 15.31m

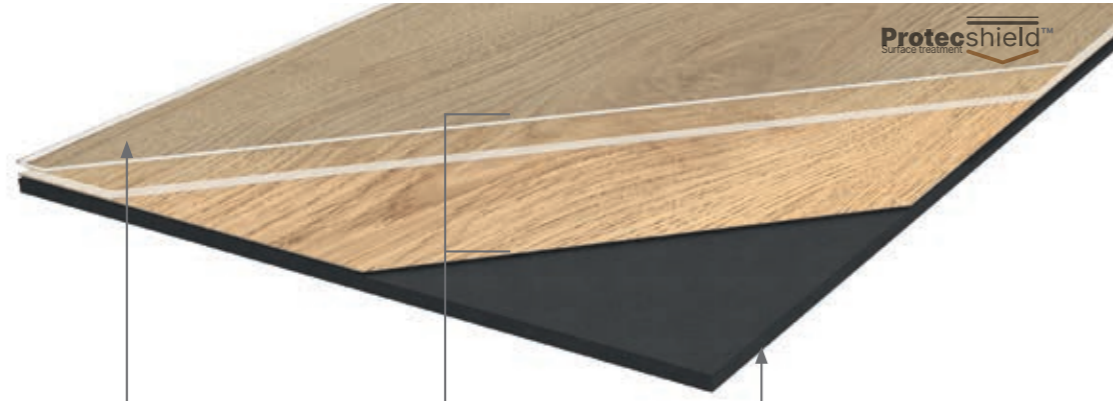
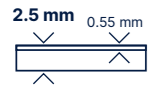
Code: 5949 - Format: 1.18m x 8.51m

- 100% REACH PHTHALATE FREE***
- 100% RECYCLABLE UP TO 55% RECYCLED CONTENT**
- TVOC EMISSIONS BELOW DETECTION LEVEL (TVOC < 10µg/m³ after 28 days) NO FORMALDEHYDE**

- 100% REACH PHTHALATE FREE**
- 100% RECYCLABLE UP TO 35% RECYCLED CONTENT**
- TVOC EMISSIONS BELOW DETECTION LEVEL (TVOC < 10µg/m³ after 28 days) NO FORMALDEHYDE**

Creation 55

Formats (mm) 184x1219 230x1500 152x762 610x610 914x914 457x914



PROTECSHIELD™

ENHANCED PERFORMANCES



ULTRA MATT SURFACE



4D DESIGN

CRYSTAL WEAR LAYER



HIGH DEFINITION PRINTED FILM



STRUCTURED EMBOSS



BEVELLED EDGES

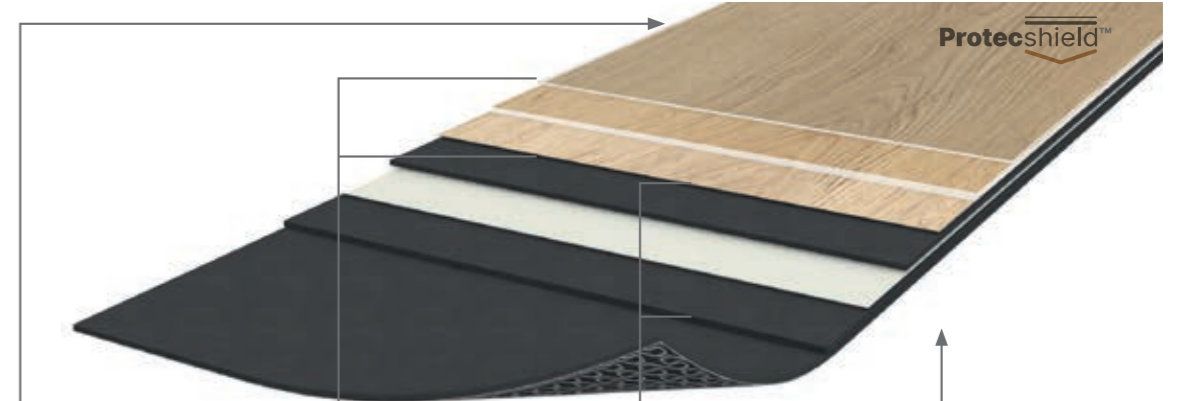
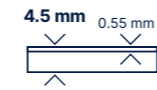


RESILIENT COMFORT CORE



Creation 55 Looselay

Formats (mm) 229x1220 500x500 600x600



PROTECSHIELD™

ENHANCED PERFORMANCES



ULTRA MATT SURFACE



4D DESIGN

CRYSTAL WEAR LAYER



HIGH DEFINITION PRINTED FILM



STRUCTURED EMBOSS



BEVELLED EDGES



RESILIENT CORE BOARD

RENOVATION



DIMENSIONAL STABILITY



RESILIENT COMFORT CORE



REMOVABLE

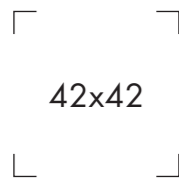


WAFFLE BACKING



Can be combined with pre-adhesive underlayer

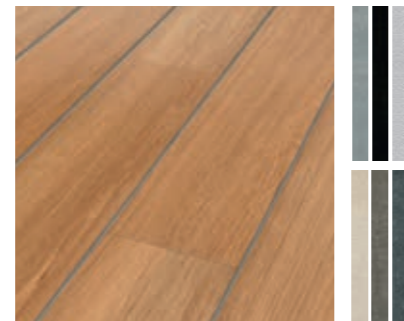
Gerflor Smart Fix 16dB



Code: 1698 - Format: 1 m x 7.51m

LVT decoratives strips

Format (mm) 4x914mm



Code: 3203 + Color code



100% REACH
PHTHALATE FREE



100% RECYCLABLE
UP TO 35% RECYCLED CONTENT



TVOC EMISSIONS BELOW
DETECTION LEVEL
(TVOC < 10µg/m³ after 28 days)
NO FORMALDEHYDE



Available in 19dB
Creation 55 Looselay Acoustic

with integrated acoustic underlay

Formats (mm) 229x1220 500x500



100% REACH
PHTHALATE FREE



100% RECYCLABLE
UP TO 35% RECYCLED CONTENT



TVOC EMISSIONS BELOW
DETECTION LEVEL
(TVOC < 10µg/m³ after 28 days)
NO FORMALDEHYDE

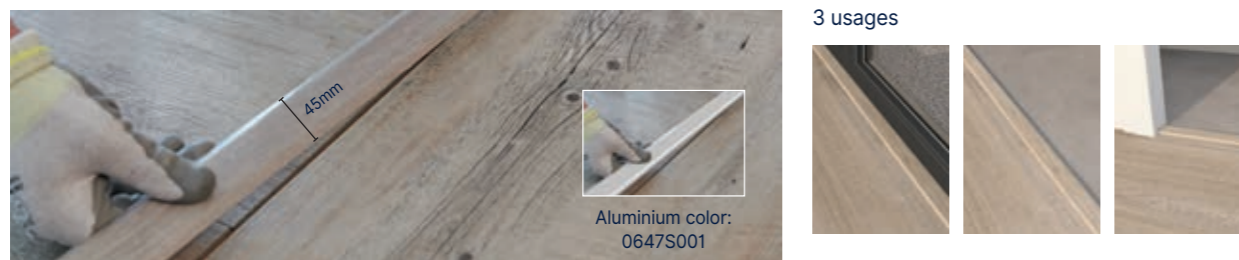
More than a floor

Design skirting



Vinyl Code: 6086 + Color code / MDF Code: 5947 + Color code

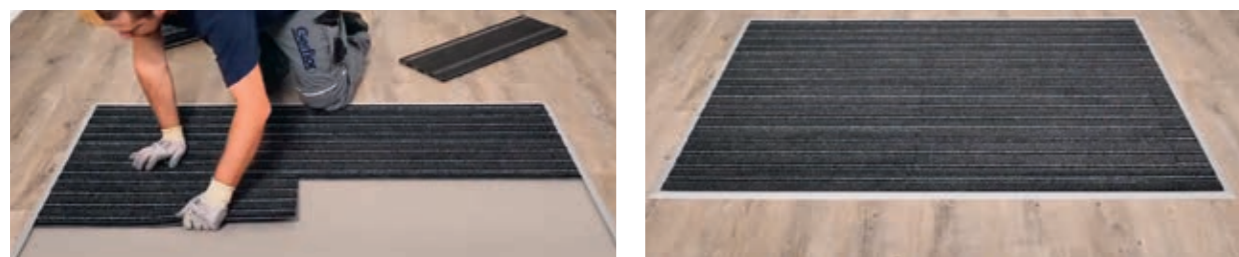
Design coverstrip



Code: 0647 + Color code - Format: 45mm x 0.90m
Available colors on gerflor.com

Entrance mat

Quickmat Tiles: Pre-adhesived planks (12mm thick)



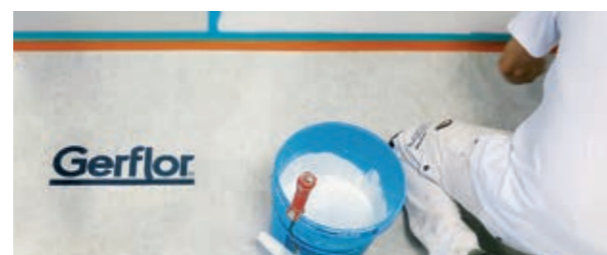
Code: 1725, profiles 1726 and angles 1727 - adapted to 4 to 6mm thick products

Tool



Anti-bounce mallet: 5951

Floor protection



Code: 058X

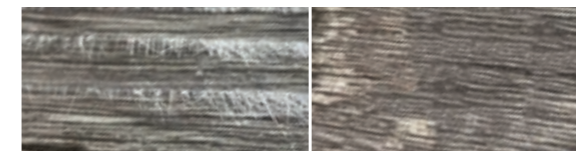
New surface treatment



Enhanced durability

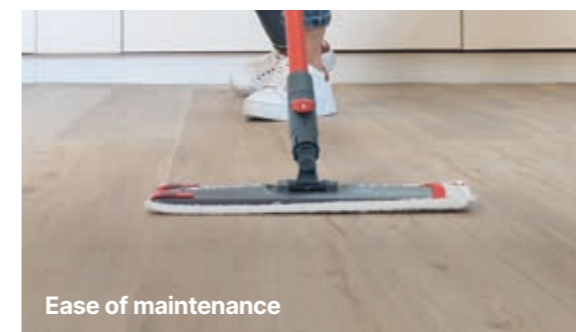


Microscopic view (x5)

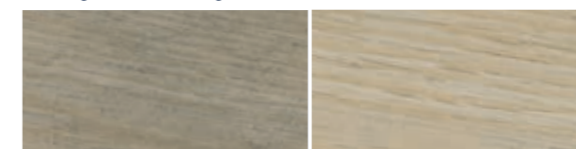


Standard varnish

Creation



Fouling after cleaning



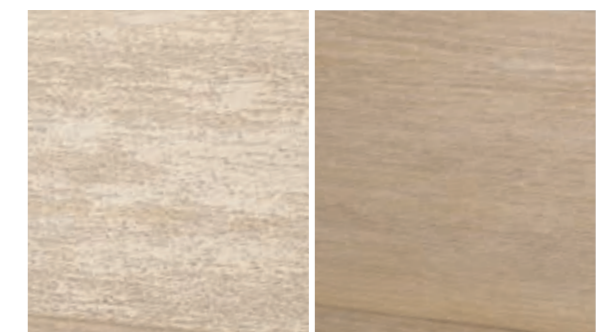
Standard varnish

Creation

Ultra Matt finish



Gloss level (60° test)



Standard varnish

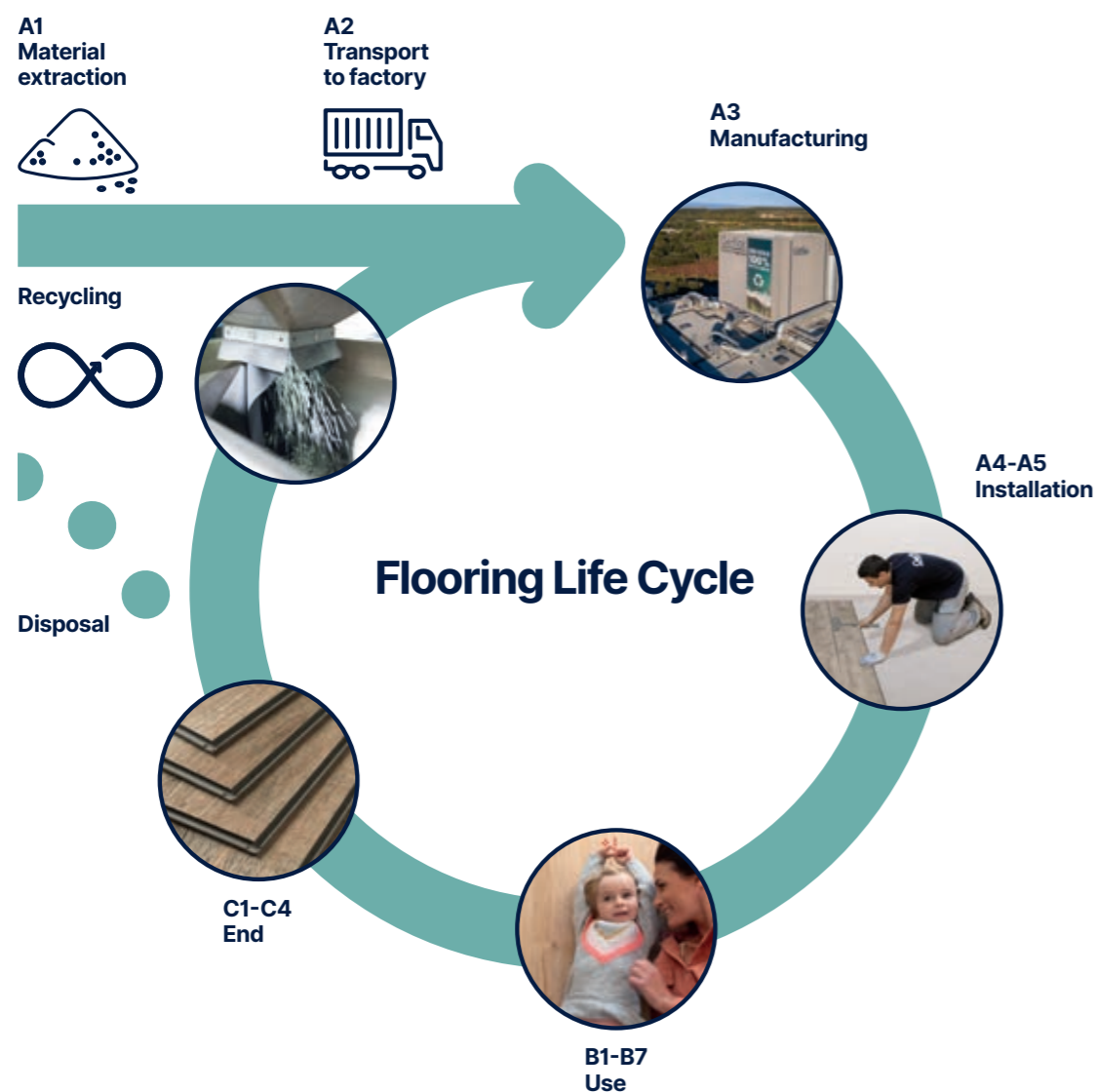
Creation 2019 / Creation 2022
Unchanged visual aspect

Maintenance guidelines available on gerflor.com

Our Commitments

for a Sustainable future

All Gerflor product ranges are developed according to a life cycle analysis model



Third-party verified life cycle analysis of our products can be found in their Environmental Product Declaration (EPD)

Creation

the reference in sustainability



Carbon footprint

- Manufacturing Footprint in Europe
- ISO 14001 & 50001 certifications
- Renewable energy



3 factories in Europe



Circularity

- 100% recyclable products
- High % of recycled content
- Adhesive Free solutions
- Packaging using 100% recycled cardboard



Health and safety

- 100% Reach compliant
- Phthalate free*
- Formaldehyde Free
- Indoor Air Quality: TVOC <10 µg/m³ after 28 days

* Except recycled content



we care / we act

Customise your Creation 55*

my Creation

colour 34

Creation designs with
the colour of your choice

library 30

Additional designs

custom +

Create your own design

* For more information please contact
your sales representative.

Creation 55

	Dry Back	Solid Clic	Rigid Acoustic	Looselay	Looselay Acoustic	Skirting Matching Design	Coverstrip Matchin Design	Emboss	NCS	LRV
Code Color Design										
0447 Amador	184 x 1219	212 x 1239	177 x 1219***	229 x 1220***	229 x 1220***	S004	S004	Saw Effect	5005-Y50R	251
0579 Amarante	184 x 1219	-	-	-	-	S005	S001	Brushed	5010-Y30R	21.3
0060 Arena	184 x 1219	212 x 1239	-	229 x 1220***	229 x 1220***	S026	S001	Saw Effect	4005-Y20R	37.2
0347 Ballerina	184 x 1219 152 x 762	212 x 1239	177 x 1219 125 x 750	229 x 1220	229 x 1220	S008	S008	Natural	4040-Y20R	28.4
0869 Bloom Uni Grey	610 x 610	389 x 729	457 x 914	600 x 600	-	S071	S071	Hammered	5005-B20G	23.2
0868 Bloom Uni Taupe	610 x 610	389 x 729	457 x 914	600 x 600	-	S072	S072	Hammered	4502-Y	28.5
0871 Bostonian Oak	184 x 1219	212 x 1239	177 x 1219	229 x 1220	-	S016	S016	Natural	5020-Y20R	26.4
0853 Bostonian Oak Beige	184 x 1219 152 x 762	212 x 1239	177 x 1219	229 x 1220	-	S017	S017	Natural	4005-Y20R	36.7
0851 Bostonian Oak Honey	184 x 1219	212 x 1239	177 x 1219	-	-	S019	S019	Natural	4020-Y20R	29.8
0459 Brownie	184 x 1219	-	-	-	-	S073	S001	Natural	6020-Y30R	10.7
0457 Buffalo	184 x 1219	212 x 1239	-	-	-	S075	S001	Brushed	6010-Y10R	16.3
0465 Cambridge	184 x 1219	212 x 1239	-	-	-	S065	S001	Natural	3030-Y20R	39.8
0618 Carmel	457 x 914	389 x 729	457 x 914	500 x 500	500 x 500	S020	S020	Hammered	6005-Y50R	19.2
0850 Cedar Brown	230 x 1500	240 x 1461	225 x 1524	-	-	S024	S024	Natural	5020-Y20R	21.3
0849 Cedar Pure	230 x 1500	240 x 1461	225 x 1524	-	-	S025	S025	Natural	3010-Y30R	39.8
1278 Charming Oak Beige	184 x 1219	212 x 1239 *	177 x 1219	-	-	S188	S001	EIR - Charming Oak	4010-Y50R	31.5
1280 Charming Oak Brown	184 x 1219	212 x 1239 *	177 x 1219	-	-	S191	S001	EIR - Charming Oak	6010-Y70R	13.4
1279 Charming Oak Grey	184 x 1219	212 x 1239 *	177 x 1219	-	-	S190	S001	EIR - Charming Oak	3000-N	36.2
1277 Charming Oak Nature	184 x 1219	212 x 1239 *	177 x 1219	-	-	S192	S001	EIR - Charming Oak	5010-Y30R	18.6
1276 Curton Stone Light Beige	457 x 914	389 x 729	457 x 914 **	-	-	S184	S184	Stone	2010-Y40R	48.9
1275 Curton Stone Light Grey	457 x 914	389 x 729	457 x 914 **	-	-	S185	S185	Stone	3005-Y20R	45.9
1269 Fabrik Mix Dark Grey	610 x 610	389 x 729	-	600 x 600	-	S165	S001	Hammered	6005-R50B	13.4
1270 Fabrik Mix Indigo	610 x 610	-	-	600 x 600	-	S166	S001	Hammered	5020-B	171
1268 Fabrik Mix Jute	610 x 610	389 x 729	-	-	-	S167	S001	Hammered	5005-Y50R	26.3
0441 Honey Oak	184 x 1219	212 x 1239	177 x 1219	229 x 1220	229 x 1220	S033	S033	Natural	4020-Y20R	27.7
0455 Long Board	184 x 1219	212 x 1239	177 x 1219	229 x 1220	229 x 1220	S034	S034	Brushed	4010-Y30R	24.8
1272 Lounge Oak Beige	230 x 1500	240 x 1461 *	225 x 1524	-	-	S168	S001	EIR - Lounge Oak	4010-Y30R	33.9
1274 Lounge Oak Chestnut	230 x 1500	240 x 1461 *	225 x 1524	-	-	S192	S001	EIR - Lounge Oak	5010-Y30R	20.5
1271 Lounge Oak Golden	230 x 1500	240 x 1461 *	225 x 1524	-	-	S189	S001	EIR - Lounge Oak	5020-Y20R	23.8
1273 Lounge Oak Natural	230 x 1500	240 x 1461 *	225 x 1524	-	-	S189	S001	EIR - Lounge Oak	4020-Y30R	30.2
0448 Malua Bay	184 x 1219	212 x 1239	177 x 1219	229 x 1220	229 x 1220	S035	S035	Brushed	2502-Y	471
0068 Mansfield Light	184 x 1219	-	-	-	-	S190	S001	Brushed	4502-Y	31.8
0069 Mansfield Natural	184 x 1219	-	-	-	-	S188	S001	Brushed	3010-Y20R	37.7
0461 Michigan	184 x 1219	212 x 1239	177 x 1219	-	-	S038	S038	Brushed	6020-Y30R	13.5
0061 Oxford	184 x 1219	212 x 1239	-	-	-	S043	S001	Brushed	5502-Y	19.2
0856 Paint Wood Taupe	184 x 1219	212 x 1239	-	-	-	S046	S001	Brushed	5502-Y	18.9
1282 Palissandro Beige	230 x 1500	240 x 1461	-	-	-	S176	S001	Stone	4010-Y50R	32.1
1281 Palissandro Grey	230 x 1500	240 x 1461	-	-	-	S177	S001	Stone	4005-R20B	38.4
0374 Parker Station	610 x 610	389 x 729	457 x 914	500 x 500	500 x 500	S047	S047	Hammered	8000-N	12.6
0503 Quartet	184 x 1219 152 x 762	212 x 1239	177 x 1219 125 x 750	-	-	S056	S056	Natural	5020-Y20R	19.4
0859 Quartet Fauve	184 x 1219 152 x 762	212 x 1239	177 x 1219	229 x 1220	-	S057	S057	Natural	4030-Y20R	23.9
0870 Quartet Honey	184 x 1219	212 x 1239	177 x 1219	229 x 1220	-	S058	S058	Natural	3040-Y20R	28.2
0456 Ranch	184 x 1219 230 x 1500	212 x 1239 240 x 1461	177 x 1219	229 x 1220	229 x 1220	S053	S053	Brushed	5005-Y50R	23.5
0436 Riverside	610 x 610	389 x 729	457 x 914	600 x 600	-	S032	S032	Hammered	6502-Y	16.7
0445 Rustic Oak	184 x 1219	212 x 1239	177 x 1219	-	-	S062	S062	Natural	4030-Y20R	20.4
1286 Salento Beige	184 x 1219	212 x 1239	177 x 1219	-	-	S186	S186	Natural	2010-Y40R	37.0
1287 Salento Light Grey	184 x 1219	212 x 1239	177 x 1219	-	-	S187	S187	Natural	2005-Y40R	46.6
0373 Silver City	610 x 610	-	-	-	-	S048	S001	Hammered	6502-Y	19.1
0858 Stripe Oak Ice	184 x 1219	212 x 1239	-	-	-	S009	S001	Natural	3502-Y	37.3
0848 Swiss Oak Beige	184 x 1219	212 x 1239	177 x 1219	-	-	S011	S011	Natural	3010-Y30R	40.1
0796 Swiss Oak Golden	184 x 1219	212 x 1239	177 x 1219	229 x 1220	229 x 1220	S015	S015	Natural	4030-Y20R	25.8
0846 Swiss Oak Pearl	184 x 1219	212 x 1239	177 x 1219	229 x 1220	229 x 1220	S014	S014	Natural	3502-Y	36.1
0504 Twist	184 x 1219 152 x 762	212 x 1239	177 x 1219	229 x 1220	229 x 1220	S039	S039	Natural	3010-Y30R	38.9
1285 Urban Street Beige	914 x 914	-	-	-	-	S178	S001	Hammered	4005-Y50R	31.2
1283 Urban Street Light	914 x 914	389 x 729	-	600 x 600	-	S094	S001	Hammered	3502-R	42.3
1284 Urban Street Medium	914 x 914	389 x 729	-	600 x 600	-	S180	S001	Hammered	4502-R	26.5
1288 White Lead Oak Blond	184 x 1219	-	-	-	-	S181	S001	EIR - White Lead Oak	3010-Y40R	29.6
1289 White Lead Oak Dark Beige	184 x 1219	-	-	-	-	S182	S001	EIR - White Lead Oak	5010-Y10R	25.3
1290 White Lead Oak Shadow Grey	184 x 1219	-	-	-	-	S190	S001	EIR - White Lead Oak	3502-Y	34.6
0584 White Lime	184 x 1219	212 x 1239	177 x 1219 ***	-	-	S074	S074	Saw Effect	4005-Y20R	36.0

* Available with classic emboss in 2022. Available with EIR in 2023

** Hammered emboss in Rigid Acoustic

*** Brushed emboss in Rigid Acoustic / Looselay / Looselay Acoustic

S001 : White

Creation

the most comprehensive LVT range



Whatever the traffic, whatever your project - renovation or new build - your solution is in the Creation Collection!

4

Collections

5

Installation Systems

500

Options



New

Creation 55

European Class 33

- Creation 55 (DB)
- Creation 55 Solid Clic
- Creation 55 Rigid Acoustic
- Creation 55 Looseley
- Creation 55 Looseley Acoustic



New

Creation 40

European Class 32

- Creation 40 (DB)
- Creation 40 Solid Clic
- Creation 40 Rigid Acoustic



New

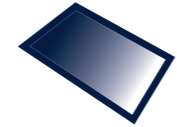
Creation 30

European Class 31

- Creation 30 (DB)
- Creation 30 Solid Clic

4D Design

Authentic tiles & planks



Ultra Matt Surface



Bevelled Edges



Crystal Wear Layer



High Definition Printed Film



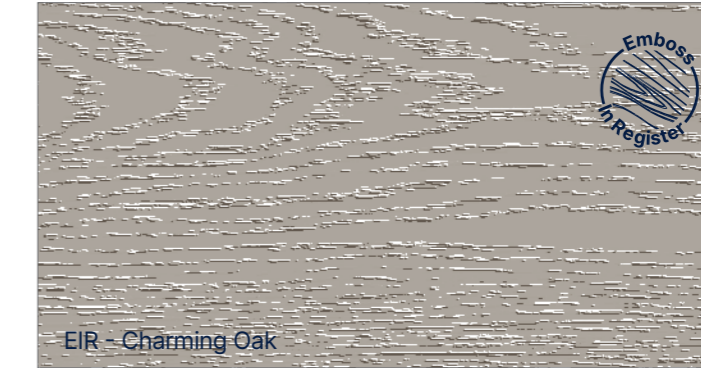
XL Design Films

Less repetition, more realism

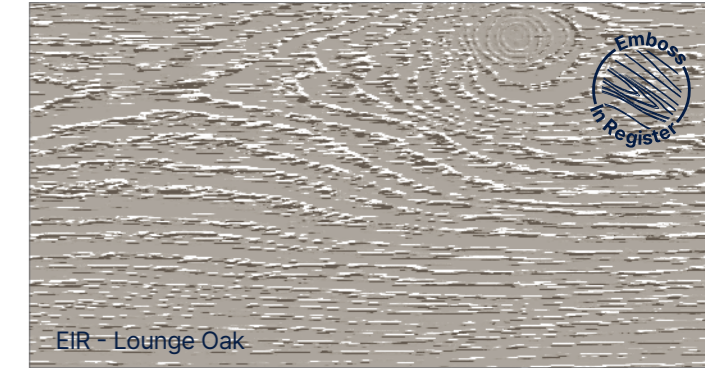


Exclusive embosses

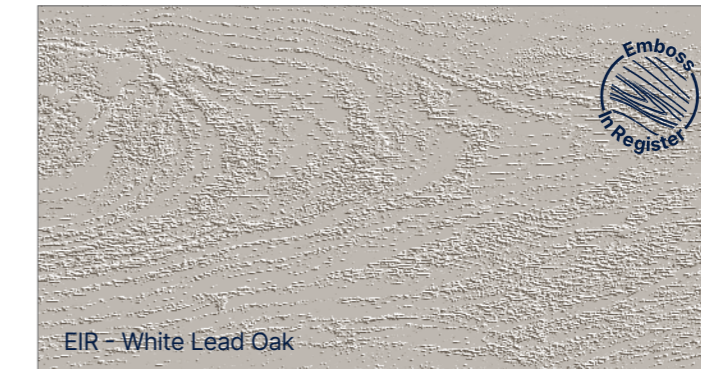
Enhanced designs!



EIR - Charming Oak



EIR - Lounge Oak



EIR - White Lead Oak



Stone



Saw effect



Hammered



Brushed

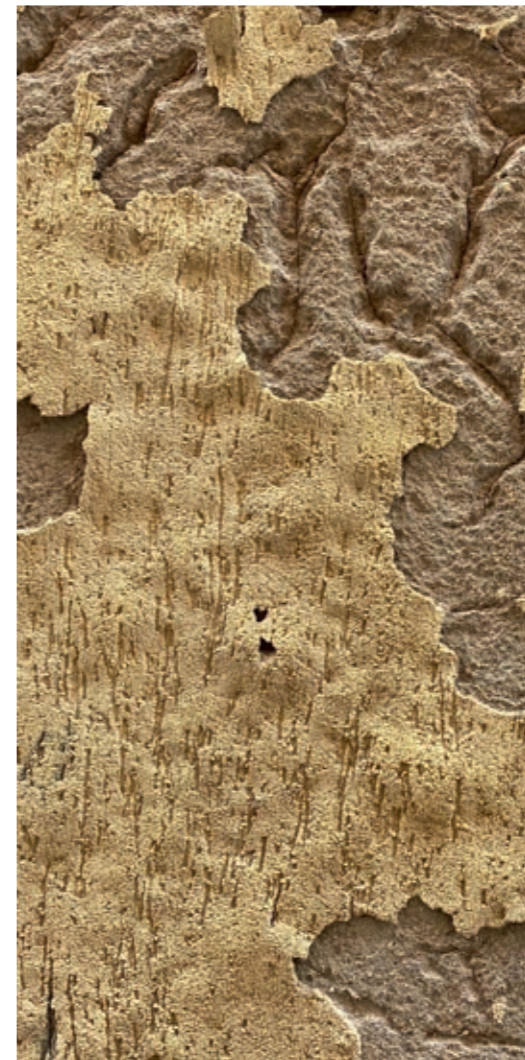


Natural

FUSION



SALENTO LIGHT GREY



PALISSANDRO BEIGE



NATURAL



BRAUKERNE BEIGE



SWISS OAK GOLDEN



FABRIK MIX JUTE



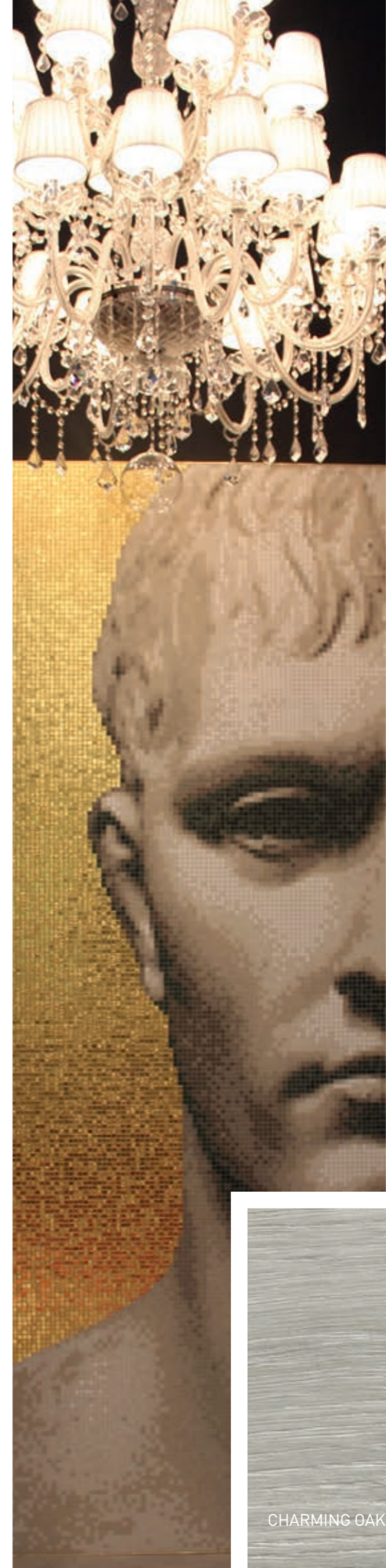
TIMELESS



ULTRAREALISM



WHITE LEAD OAK BROWN

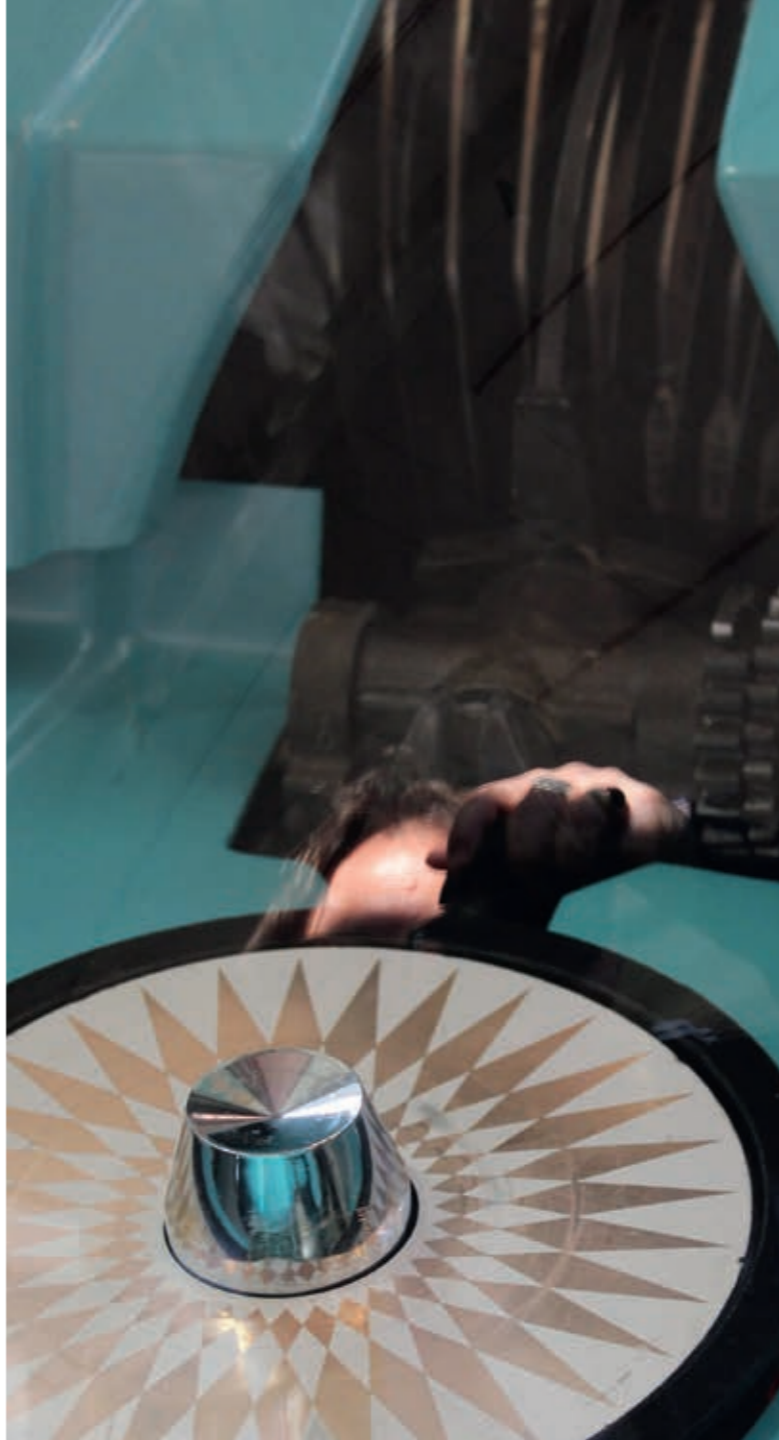


CHARMING OAK GREY

VINTAGE



PAINTWOOD TAUPE



RIVERSIDE



DESCRIPTION / BESCHREIBUNG / BESCHRIJVING / DESCRIPTION / DESCRIPCIÓN / DESCRICÃO / DESCRIZIONE	Creation 55		Creation 55 Solid Clic	Creation 55 Rigid Acoustic	Creation 55 Looselay	Creation 55 Looselay Acoustic
	Creation 55	Creation 55 Trend	Creation 55 Design			

Total Thickness / Gesamtdicke / Totale dikte / Épaisseur totale / Espesor total / Espessura total / Spessore totale	EN ISO 24346	mm	2.50	5.00	6.00	4.50	5.50
Thickness of the wearlayer / Dicke der Nuttschicht / Dikte van de slijtlaag / Épaisseur couche d'usure / Espesor capa de uso / Espessura camada de desgaste / Spessore strato di usura	EN ISO 24340	mm	0.55	0.55	0.55	0.55	0.55
Weight / Flächengewicht / Gewicht / Poids / Peso / Peso / Peso	EN ISO 23997	g/m ²	3 850	4 410	7781	9 480	7 500
Size / Format / Afmetingen / Format / Dimensiones / Dimensões / Dimensie	ISO 24342 ASTM F 536	mm inch	457.2 x 914.4 mm / 18" x 36" / 9 / 3.76m ² 609.6 x 609.6 mm / 24" x 24" / 9 / 3.36m ² 184.15 x 1219.2 mm / 7.25" x 48" / 15 / 3.36m ² 914.4 x 914.4 mm / 36" x 36" / 5 / 4.18m ² 152 x 762 mm / 6" x 30" / 33 / 3.82m ² 230.0 x 1500.0 mm / 9" x 59" / 9 / 3.11m ²	212 x 1238.8 / 8.3" x 48.8" / 7 / 1.84m ² 239.6 x 1460.8 / 9.4" x 57.5" / 6 / 2.10m ² 388.8 x 728.7 / 15.3" x 28.7" / 6 / 1.70m ²	125 x 750 / 5" x 30" / 16 / 1.50m ² 177 x 1219 / 7" x 48" / 8 / 1.73m ² 225 x 1524 / 8.86" x 60" / 5 / 1.71m ² 457 x 914 / 18" x 36" / 4 / 1.67m ²	229 x 1220 / 9" x 48" / 8 / 2.23m ² 500 x 500 / 19.7" x 19.7" / 8 / 2.0m ² 600 x 600 / 23.62" x 23.62" / 6 / 2.16m ²	229 x 1220 / 9" x 48" / 8 / 2.23m ² 500 x 500 / 19.7" x 19.7" / 8 / 2.0m ²

CLASSIFICATION / KLASSIFIKATION / CLASSIFICATIE / CLASSIFICATION / CLASIFICACIONES / CLASSIFICAÇÕES / CLASSIFICAZIONI

Norm/Product Specification / Produktnorm / Technische eigenschappen / Norme/Spécification produit / Normas / Normas / Norma prodotto	-	-	EN ISO 10582	EN ISO 10582	EN ISO 10582	EN ISO 10582	EN 651
European Classification / Europäische Klassifizierung / Europese classificatie / Classement européen / Clasificación europea / Classificação Europeia / Europea	EN ISO 10874	class	33 - 42	33 - 42	33 - 42	33 - 42	33 - 42
Fire Rating / Brandverhalten / Brand classificatie / Classement Feu / Fuego / Fogo / Reazione al fuoco	EN 13 501-1	class	Bfl-s1	Bfl-s1	Bfl-s1	Bfl-s1	Bfl-s1
Static Electrical Propensity / Begehaufladung / Elektrische eigenschappen / Potentiel de charge / Comportamiento electrostático / Comportamento electrostático / Resistenza elettrica	EN 1815	kV	< 2	< 2	< 2	< 2	< 2
Slip Resistance Wet / Rutschhemmung / Anti-slip / Glissance humide / Deslizamiento húmedo / Escorregamento húmido / Scivolosità umida ¹⁾	DIN 51130 / BGR 181	class	R10	R10	R10	R10	R10




PERFORMANCES / TECHNISCHE EIGENSCHAFTEN / TESTRESULTAAT / PERFORMANCE / CUALIDADES TÉCNICAS / PERFORMANCES / CARATTERISTICHE TECNICHE

Wear Resistance / Verschleißverhalten / Slijtvastheid / Résistance à l'usure / Abrasión / Abrasão / Resistenza all'abrasione	EN 660.2	mm ²	< 2.0	< 2.0	< 2.0	< 2.0	< 2.0
Wear Group / Verschleißgruppe / Groep slijtvastheid / Groupe d'abrasion / Grupo de abrasion / Grupo de abrasão / Gruppo di abrasione	QB 30	group	T	T	T	T	T
Type Binder content / Bindemittelgehalt / Teneur en agent liant / Contenido en ligante / Conteúdo em ligante en agent	ISO 10582	group	I	I	I	I	I
Dimensional stability (norm) / Maßstabilität (norm) / Maatvastheid (norm) / Stabilité dimensionnelle (norme) / Estabilidad Dimensional (Exigencia) / Estabilidade dimensional (normalização) / Stabilità dimensionale (requisito normativo)	EN ISO 23999	%	≤ 0.25	≤ 0.15	≤ 0.15	≤ 0.15	≤ 0.15
Dimensional stability (average measured value) / Maßstabilität (Durchschnittswert) / Stabilité dimensionnelle (valeur moyenne mesurée) / Maatvastheid (gemeten gemiddelde waarde) / Estabilidad Dimensional (Valor medido) / Estabilidade Dimensional (Valor medido) / Stabilità dimensionale (rilevata)	-	%	≤ 0.10	~ 0.05	≤ 0.10	~ 0.05	~ 0.05
Residual Indentation / Resteindruck / Indrukbelasting / Poinçonnement statique rémanent / Punzonamiento / Punçoamento / Impronta	EN ISO 24343-1	mm	≤ 0.10	≤ 0.10	≤ 0.05	≤ 0.05	≤ 0.20
Impact sound insulation / Trittschallverbesserungsmaß / Geluidsisolatie / Isolation acoustique bruits de chocs / Acústica / Isolamento acústico	EN ISO 717-2	dB	4	4	19	7	19
Room Impact / Raumschall / Looppgeluid / Sonorité à la marche / Rumore al calpestio / Sonoridad en la pisada / Sonoridade ao andar	NF S 31074	dB	77	79	81	73	70
Castor chair test / Stuhlrollenbeanspruchung / Rolweerstand bureaustoelen / Essai de la chaise à roulettes / Determinación del efecto de una silla con ruedas / Resistência a cadeiras de rodas / Resistenza al passaggio di sed	ISO 4918	-	OK	OK	OK	OK	OK
Thermal Conductivity / Wärmeleitfähigkeit / Thermische weerstand / Conductivité thermique / Conductividad térmica / Contutividade térmica / Resistenza termica / Varmeledningsmotstånd / Varmemotstand	EN ISO 10456	W/(m.K)	0.25	0.25	0.25	0.25	0.25
Colour Fastness / Lichtechtheit / Lichtechtheid / Solidité lumière / Resistencia a la luz / Estabilidade das cores / Solidità alla luce	EN ISO 105 - B02	Degree	≥ 6	≥ 6	≥ 6	≥ 6	≥ 6
Surface Treatment / Oberflächenvergrüung / Oppervakthebehandeling / Traitement de surface / Tratamiento de superficie / Tratamento de superficie / Trattamento di superficie	-	-	ProtecShield™	ProtecShield™	ProtecShield™	ProtecShield™	ProtecShield™
Chemical Products Resistance / Verhalten gegenüber Chemikalien ²⁾ / Resistencia a los productos químicos / Resistência aos produtos químicos / Resistenza ai prodotti chimici	EN ISO 26987	-	OK	OK	OK	OK	OK

ENVIRONMENT/INDOOR AIR QUALITY / UMWELT/RAUMLUFTQUALITÄT / AMBIENTE/QUALIDADE DO AR INTERIORENVIRONNEMENT/QUALITE DE L'AIR INTERIEUR / MEDIO AMBIENTE/CALIDAD INTERIOR DEL AIRE INTERIOR / MEIOAMBIENTE/QUALIDADE DO AR INTERIOR

TVOC after 28 days / TVOC (28 Tage) / TVOC (28 dagen) / TVOC après 28 jours / TVOC (28 dias) / TVOC (28 dias) / TVOC (28 giorni)	ISO 16000-6	µ/m ³	< 10	≤ 10	< 10	< 10	< 10
Certification / Zeugnis / Certification / Certificado / Certificação	-	-	Floorscore®	Floorscore®	Floorscore®	Floorscore®	Floorscore®

CE MARKING / CE KENNZEICHNUNG / EG_CONFORMITEITSMERK / MARQUAGE CE / MARCA DE CONFORMIDAD CE / MARCA DE CONFORMIDADE CE / MARCATURA CE DI CONFORMITA

CE	EN 14041	-				
----	----------	---	---	--	---	---

(1) Plan incliné avec huile / Ramp test with oil / Schiefe Ebene
(2) Beständig gegenüber nicht färbenden alkoholhaltigen Handdesinfektionsmitteln, Haushaltschemikalien und verdünnten Säuren und Laugen bei kurzzeitiger Einwirkung.

IMPORTANT: The information contained in this document is valid from 01/05/2022 and is subject to change at any time without notice. In the context of constantly changing technology, our customers are responsible, prior to any use, for checking with us that this document is the version in force.

we care / we act Our Commitments for a Sustainable future



CARBON FOOTPRINT*
-20 % kg CO₂ equivalent/m² between 2020 and 2025



BIO-SOURCED CONTENT**
10 % by 2025



RECYCLED CONTENT
30 % by 2025



ADHESIVE FREE***
35 % by 2025



ANNUAL VOLUME RECYCLED
60 000 t by 2025



* Scopes 1 and 2 defined in the GHG protocol ** % of activity with biosourced materials *** % of activity - adhesive free solution