

DLW LINOLEUM



Creative by Nature



Gerflor[®]
the flooring group



DLW, THE GENUINE LINOLEUM BRAND	4-5
KEY BENEFITS OF LINOLEUM	6-7
NATURAL COMPOSITION	8-9
CIRCULAR ECONOMY	10
CARBON FOOTPRINT	11
CRADLE TO CRADLE CERTIFICATION	12-13
NEOCARE™	
THE NEW EXCLUSIVE SURFACE PROTECTION ..	14-17
• Indoor air quality	15
• Natural Design with realistic matt effect	15
• Easy to clean	16
• Hygiene	16
• Durable	17
THE MOST COMPLETE OFFER	18
COMPACT LINOLEUM	20-38
• Product range	20
• Description text	36
• Technical data	38
ACOUSTIC LINOLEUM	39-43
• Product range	40
• Description text	42
• Technical data	43
TECHNIC LINOLEUM	44-47
• Product range	45
• Description text	46
• Technical data	47
MORE THAN A FLOOR	48-49
CLEANING INSTRUCTIONS	50-51
MIX & MATCH	52-53
THE PROOF IS IN THE CUSTOMER EXPERIENCE	54-55

DLW, THE GENUINE LINOLEUM BRAND



PART OF
GERFLOR GROUP
SINCE 2018

SERVING ARCHITECTURE SINCE 1882

- **1863:** Invention of Linoleum by Sir Frederic Walton.
- **1882:** Foundation of DLW, the first linoleum brand in Germany and its factory is based in Delmenhorst (Germany)



HISTORICISM
1913
Gabriel von Seidl
Cityhall, **Bremen**



BAUHAUS
1927
Mies van der Rohe
Gropius
Weissenhofsiedlung,
Stuttgart



**MODERN
MOVEMENT**
1957
Le Corbusier
Heilsberger apartments,
Berlin



**CONTEMPORARY -
MARS 1976 MOVEMENT**
1992
Jean Nouvel
Hôtel Les Thermes, **Dax**



**CONTEMPORARY -
EXPERIMENTAL
& MINIMALISM**
2008
Herzog & de Meuron
Olympic Stadium, **Beijing**

KEY BENEFITS OF LINOLEUM



Durability

- Inlaid product construction
> **Long lasting appearance**
- Hardwearing
> **Adapted to high pedestrian and mechanical traffic**
- Micro scratch resistance
> **No problem with tearings and scratches**



Health

- Third part certified antiviral and antibacterial activity
> **Hygienic solution**
- Very low emissions
TVOC < 10 microgram/m³ after 28 days
> **Best indoor air quality**
- Neocare™ surface treatment (dirt and stain barrier)
> **Easy to clean**



Comfort

- Resilient and soft surface
> **Child friendly**
- Up to 19dB sound insulation
> **Acoustic comfort**
- Suitable for underfloor heating
> **Thermal comfort**



Design

- Selection of designs and colors
> **Freedom of choice**
- Matt effect
> **Contemporary finish**
- Mix and match possibilities
> **Creativity and differentiation**

NATURAL COMPOSITION

✓ 98%

NATURAL
(bio based & mineral)

✓ 76%

RAPIDLY
RENEWABLE

Up to
✓ 40%

RECYCLED
CONTENT



ECO LABELS

QUALITY



LIFE CYCLE ANALYSIS



INDOOR AIR QUALITY



CIRCULAR ECONOMY

DLW Linoleum products are developed according to a Life cycle analysis (LCA) methodology:

- To assess the existing product impact on the environment through all stages of its life cycle.
- To develop new products specifically designed to reduce their environmental impact.



CARBON NEUTRAL*

Our CO₂ emissions are neutral during the first stages of the product life cycle, from the growing of raw materials to the end of the production process.

All the details can be found in our Environmental Product Declaration, which has been third part certified (EVEA laboratory) according to the guidelines of international certification body (UL).

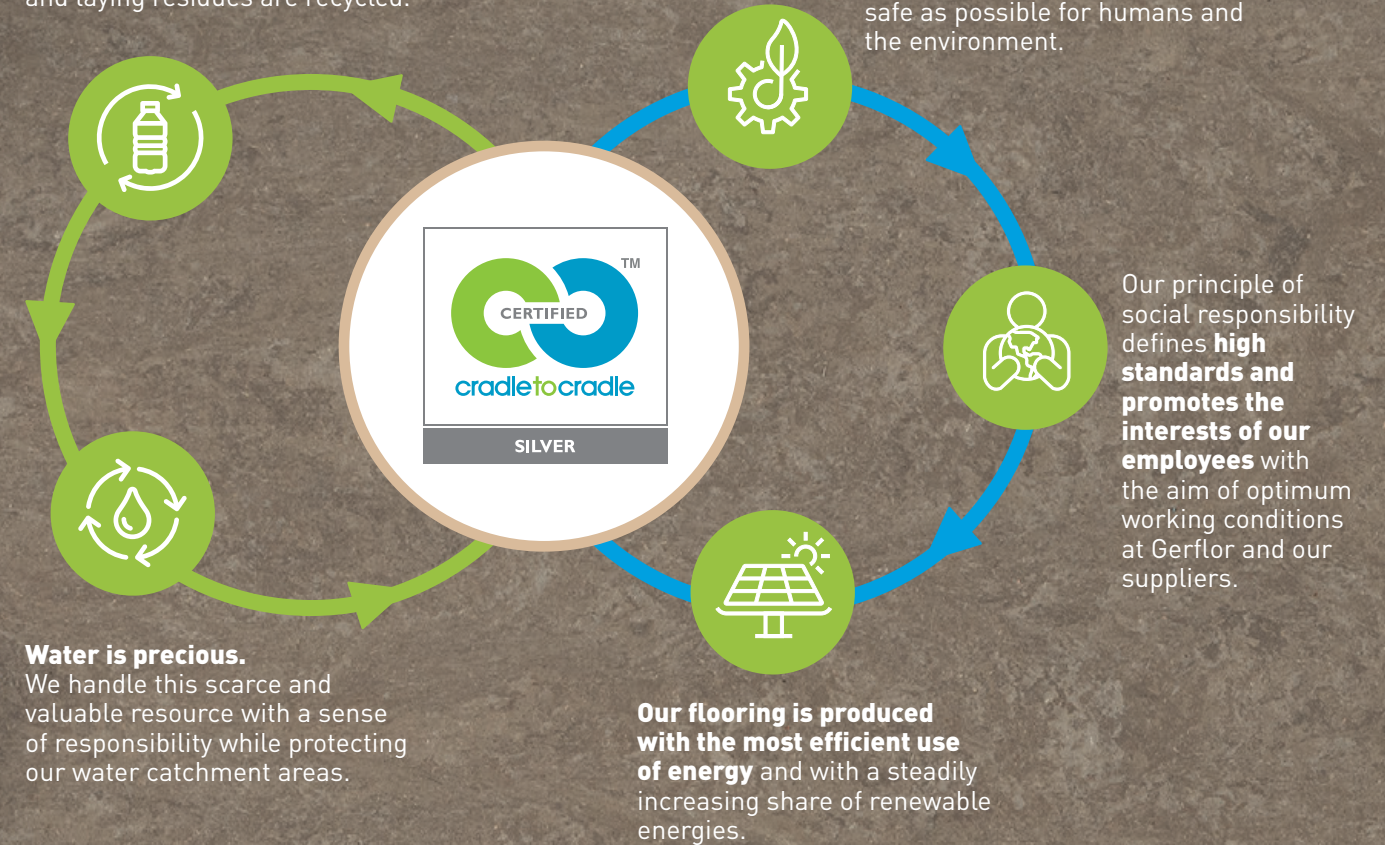
(*) From Cradle to Gate: includes raw materials and manufacturing process (A1-A3 stages of EPD)



CRADLE TO CRADLE CERTIFIED™ SILVER⁽¹⁾

DLW Linoleum consists of **76%** rapidly renewable raw materials, and contains up to **40%** of recycled content. **100%** of production waste and laying residues are recycled.

The products are manufactured **using raw materials** that are as safe as possible for humans and the environment.



(1) MARMORETTE, ARABESQUE, COLORETTE, UNI WALTON, MARMORETTE ACOUSTIC, LINO ART

Being **Cradle to Cradle Certified™ Silver** means our product was awarded certification based upon their performance across five critical areas of sustainability: Material Health, Product Circularity, Renewable Energy and Carbon Management, Water Stewardship, and Social Fairness. The certification is awarded by the Cradle to Cradle Products Innovation Institute.

Cradle to Cradle Certified™ products are designed for a safe, circular and responsible future economy. Gerflor's final target is to reduce waste, up to get "zero waste" meaning the waste can become available for a new product cycle.

Cradle to Cradle Certified™ is a product certification based on a design philosophy Gerflor adheres to follow this approach in the search for continuous improvement.



EXCLUSIVE



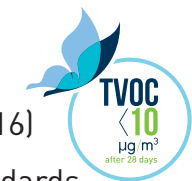
PROTECTIVE BY NATURE

NEW SOLVENT-FREE SURFACE PROTECTION DEVELOPED EXCLUSIVELY FOR LINOLEUM.
EXTREMELY HARD WEARING DUE TO TRIPLE LASER UV CROSS-LINKING

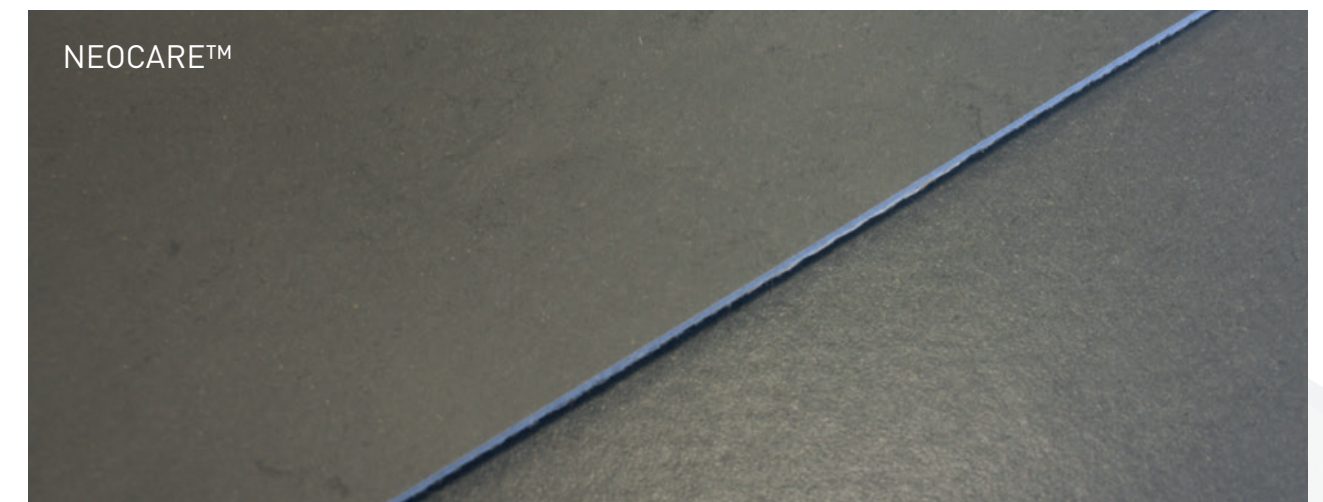


INDOOR AIR QUALITY

- Very low VOC emissions
TVOC < 10microgram/m³ after 28 days (ISO 16516)
- Certified according to the most demanding standards



NATURAL DESIGN
MATT EFFECT



LPX / PUR / others...

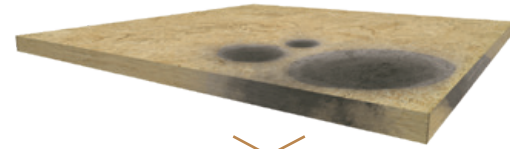
neocare



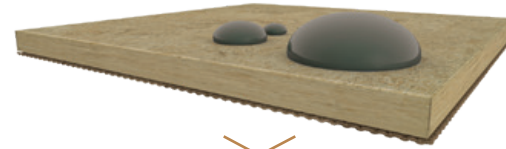
EASY TO CLEAN

- Dirt and stain barrier
- Cost effective maintenance
- Easy cleaning with a mop or any modern cleaning equipment

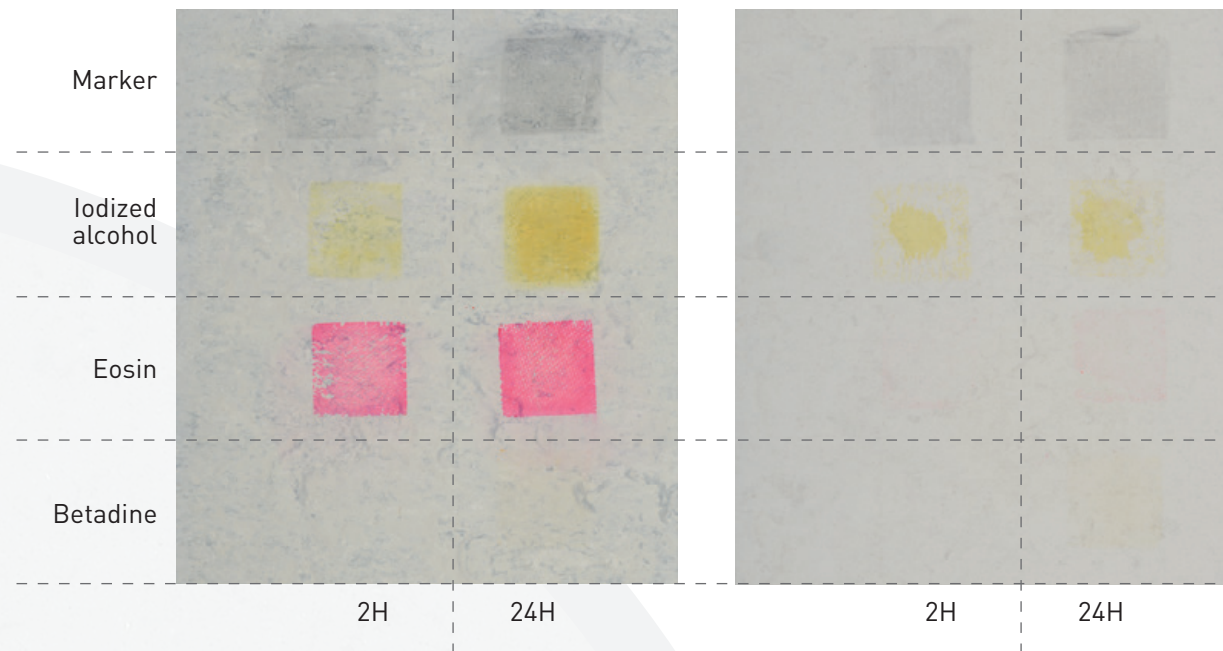
Detailed cleaning protocol available on www.gerfor.com



Standard Linoleum



NEOCARE™



HYGIENE

DLW Linoleum floorings contribute to lower the microbe load (bacteria, virus, ...) and to minimise the risk of a contamination chain.

- Excellent resistance against disinfection chemicals
- Antiviral and antibacterial activity

ANTIBACTERIAL SURFACES

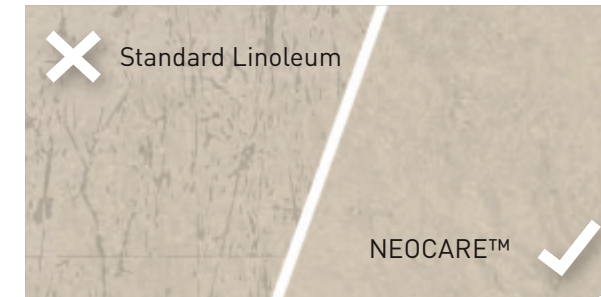
Tests conducted by a third part lab (Isega) according to ISO 22196 / JIS Z 2801 standard, prove that DLW Linoleum floorings with Neocare™ surface treatment have antibacterial activity against E.coli - S.aureus - MRSA: our surfaces **inhibit growth of bacteria by 99,99% after 24h**

ANTIVIRAL SURFACES

Tests conducted by a third part lab (Virhealth) according to ISO 21702 standard, prove that DLW Linoleum floorings with Neocare™ have antiviral activity against Human Coronaviruses : our surfaces **reduce the number of virus by 98.65% after 5h.**



DURABLE



- No sealing and waxing needed
- Higher scratch resistance
- Easy to repair: in case of heavily damaged flooring, DLW linoleum can be easily repaired using the spray buffing method (red disk)

WAXING

NEOCARE™ is a high performing surface treatment protecting against dirt, stains and scratches and does not require any sealing & waxing throughout the life of the product. Waxing remains an option.



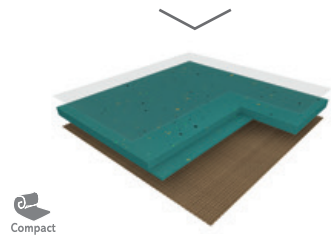
Uni Walton
0081 Nickel Grey

THE MOST COMPLETE OFFER

FLOORS

COMPACT LINOLEUM

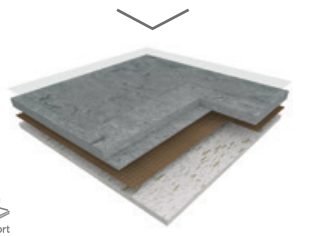
2MM / 2.5MM / 3.2MM



Marmorette 2.5mm
available in R10 & Bfl-s1

ACOUSTIC LINOLEUM

4MM
Acoustic 15dB / AcousticPlus 19dB



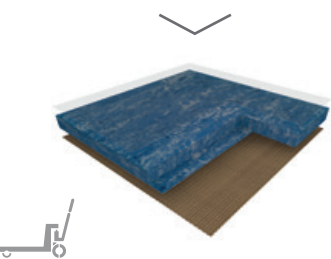
- TILES
- CUSTOMIZED COLOURS

ON DEMAND

TECHNIC LINOLEUM

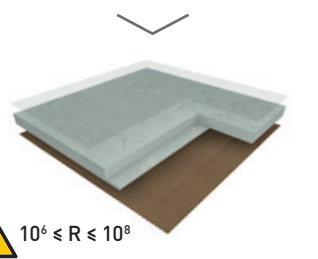
HIGH MECHANICAL TRAFFIC

4MM



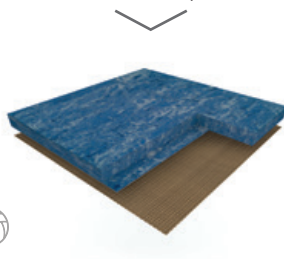
DISSIPATIVE LINOLEUM FOR ESD AREA

2.5MM

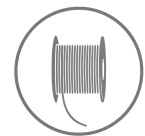


SPORT LINOLEUM

3.2MM / 4MM
More information in sport brochure

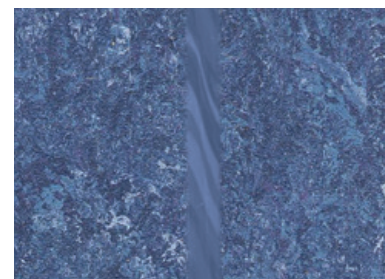


FINISHES



Welding rods

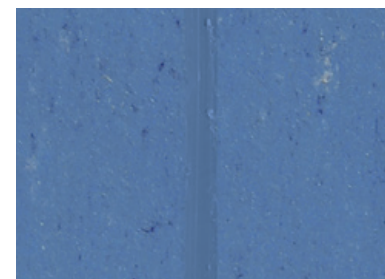
CAMOUFLAGE



Marmorette, Arabesque
& Linodur

Camouflage welding rod:
invisible joints.

UNI



Colorette, Uni Walton
& Lino Art

Uni welding rod:
a large palett of colors.

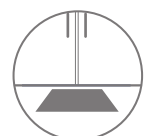
Welding rod matching table available on: gerflor.com



Handrails



Wall Coverings
& Protections



Entrance
mats



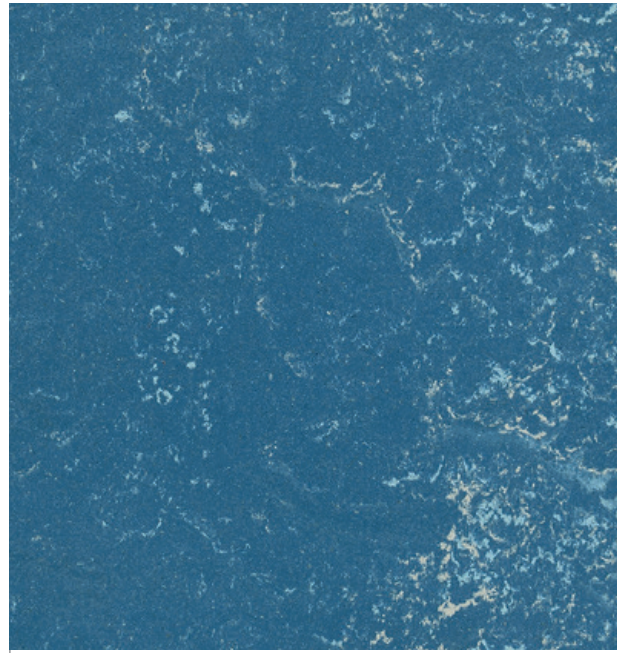
Skirtings
& Profiles



Arabesque
0305 Monarca

COMPACT LINOLEUM

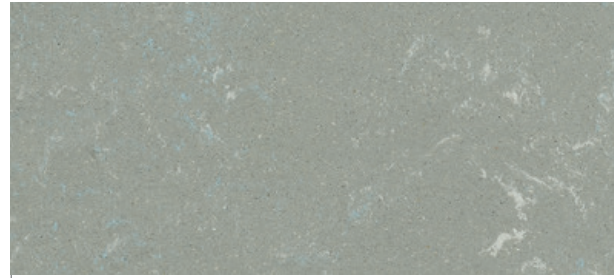
ARABESQUE



0304 Seravezza
NCS: 5030-R90B / LRV: 13.6



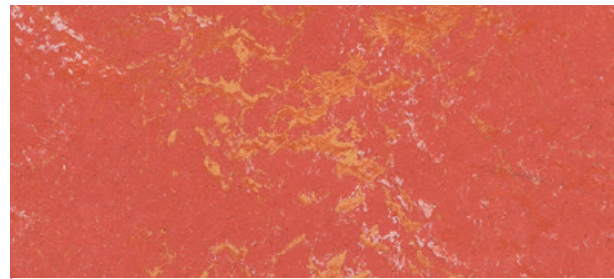
0302 Antico
NCS: 2502-Y / LRV: 47.8



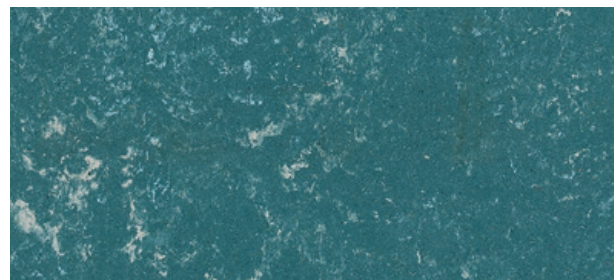
0305 Monarca
NCS: 4005-G50Y / LRV: 33.5



0301 Alcino
NCS: 8502-B / LRV: 5.7



0303 Verona
NCS: 2060-Y90R / LRV: 20.3

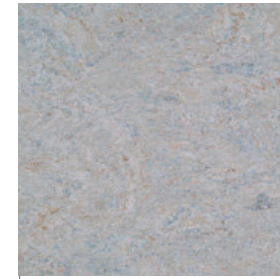


0306 Prato
NCS: 5020-B30G / LRV: 16.0

MARMORETTE



0155 Smoked Pearl
2.5mm
NCS: 2010-Y90R / LRV: 44.6



0056 Foggy Blue
2.0mm / 2.5mm / 3.2mm
NCS: 4005-Y50R / LRV: 31.8



0055 Ash Grey
2.0mm / 2.5mm / 3.2mm
NCS: 3502-B / LRV: 39.0



0153 Greystone Grey
2.5mm
NCS: 4005-Y50R / LRV: 29.5



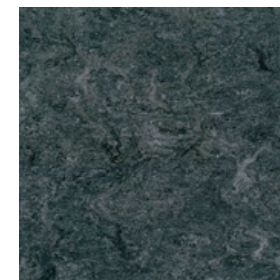
0053 Ice Grey  
2.0mm / 2.5mm / 3.2mm
NCS: 4000-N / LRV: 31.2



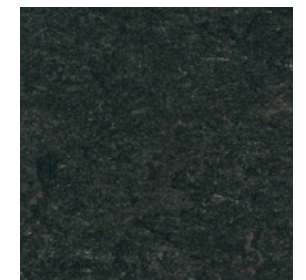
0050 Quartz Grey
2.0mm / 2.5mm / 3.2mm
NCS: 5502-R / LRV: 20.7





0054 Concrete Patty
2.5mm
NCS: 5500-N / LRV: 20.5



0059 Plumb Grey  
2.0mm / 2.5mm / 3.2mm
NCS: 7005-R50B / LRV: 11.3



0096 Midnight Grey 
2.5mm
NCS: 8000-N / LRV: 7.3

 Acoustic 15dB in stock  AcousticPlus 19dB in stock  R10: in stock  Bfl-s1: in stock

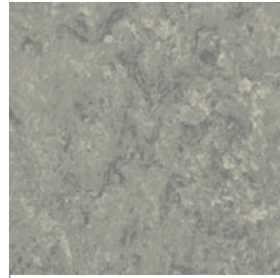
All other colours can be manufactured in Acoustic 15dB version. Special request - Minimum order quantity: 1500sqm. Below 1500sqm, use Korkment underlayer.
All other colours can be manufactured in AcousticPlus 19dB version. Special request - Minimum order quantity: 58sqm



0252 Light Grey
2.5mm
NCS: 2005-Y20R / LRV: 49.8



0045 Sand Beige A R10 Bfl
2.0mm / 2.5mm
NCS: 2005-Y50R / LRV: 53.2



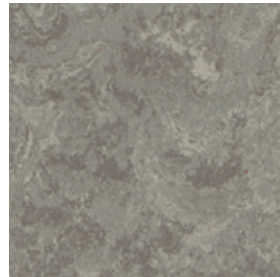
0254 Mineral Grey
2.5mm
NCS: 4005-Y20R / LRV: 34.3



0106 Hazelnut Shake
2.5mm
NCS: 4010-Y70R / LRV: 26.6



0146 Beeswax Beige
2.5mm
NCS: 3010-Y30R / LRV: 41.0



0166 Clay A+
2.5mm
NCS: 4005-Y20R / LRV: 28.4



0003 Dark Brown
2.5mm
NCS: 5010-Y50R / LRV: 23.0



0164 Milk Coffee A+
2.5mm
NCS: 5010-Y50R / LRV: 18.9



0158 Tabac Grey A+
2.5mm
NCS: 6502-R / LRV: 14.8



0089 Peacan Pie
2.5mm
NCS: 6010-Y70R / LRV: 15.2



0160 Industrial Grey
2.0mm / 2.5mm
NCS: 7502-R / LRV: 10.3



0108 Mokka Brown
2.5mm
NCS: 8005-Y80R / LRV: 6.8



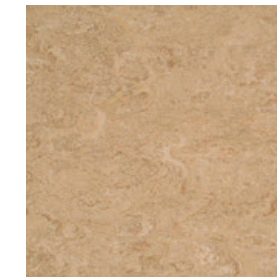
0070 Rocky Brown



0091 Shiitake Mushroom
2.5mm
NCS: 2010-Y80R / LRV: 41.6



0090 Soapstone
2.5mm
NCS: 4010-Y70R / LRV: 28.2



0092 Beach
2.5mm
NCS: 3010-Y30R / LRV: 38.6



0042 Shortcrust
2.5mm
NCS: 3020-Y30R / LRV: 31.3



0145 Banana White
2.5mm
NCS: 1510-Y40R / LRV: 60.4



0251 Cream
2.5mm
NCS: 2010-Y10R / LRV: 52.9



0253 Pebble Grey
2.5mm
NCS: 3005-Y20R / LRV: 44.7



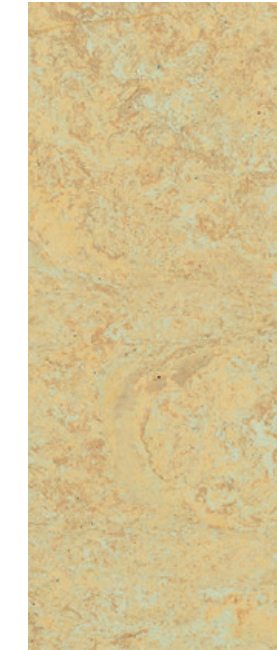
0243 Marble Beige
2.5mm
NCS: 2020-Y30R / LRV: 48.8



0070 Rocky Brown
2.0mm / 2.5mm / 3.2mm
NCS: 2020-Y40R / LRV: 40.2



0098 Desert Beige A
2.0mm / 2.5mm
NCS: 2020-Y40R / LRV: 49.9



0040 Light Sahara A+
2.0mm / 2.5mm
NCS: 1515-Y30R / LRV: 52.7



0076 Pale Yellow
2.5mm
NCS: 2030-Y10R / LRV: 49.6



A+ R10 Bfl



0018
Lobster Red



0173 Melon Orange
2.5mm
NCS: 2040-Y30R / LRV: 38.6



0073 Spicy Orange A+
2.5mm
NCS: 3040-Y50R / LRV: 24.7



0019 Sunset Orange A
2.5mm
NCS: 3040-Y60R / LRV: 27.3



0211 Pink
2.5mm
NCS: 1030-R / LRV: 42.1



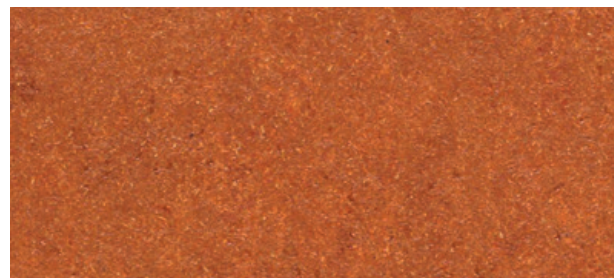
0075 Light Aurora
2.5mm
NCS: 2030-Y60R / LRV: 40.2



0072 Golden Yellow
2.5mm
NCS: 2040-Y20R / LRV: 41.0



0172 Papaya Orange
2.5mm
NCS: 2060-Y30R / LRV: 33.1



0119 Terracotta
2.5mm
NCS: 3050-Y70R / LRV: 18.1



0117 Mandarin Orange
2.5mm
NCS: 2070-Y70R / LRV: 18.8



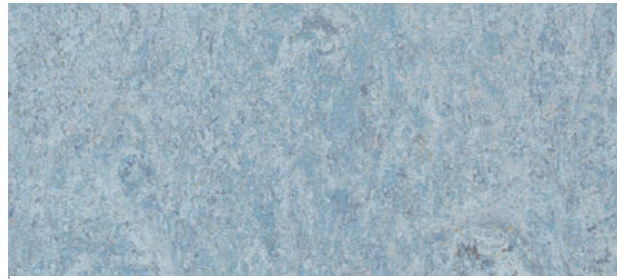
0118 Chili Red
2.5mm
NCS: 2070-Y90R / LRV: 12.5



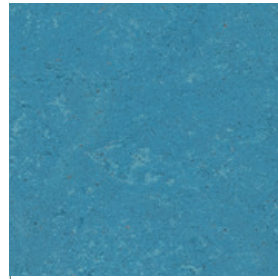
0018 Lobster Red A+
2.5mm
NCS: 4040-R / LRV: 10.6

A Acoustic 15dB in stock A+ AcousticPlus 19dB in stock

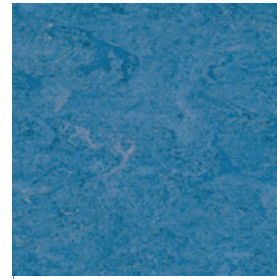
All other colours can be manufactured in Acoustic 15dB version. Special request - Minimum order quantity: 1500sqm. Below 1500sqm, use Korkment underlayer.
All other colours can be manufactured in AcousticPlus 19dB version. Special request - Minimum order quantity: 58sqm



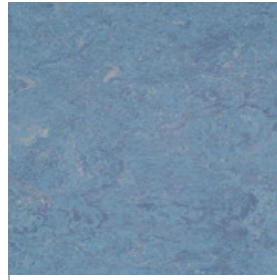
0121 Blue Eyes
2.5mm
NCS: 3010-R80B / LRV: 39.0



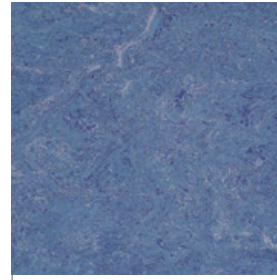
0122 Fluffy Blue
2.5mm
NCS: 4030-B / LRV: 21.6



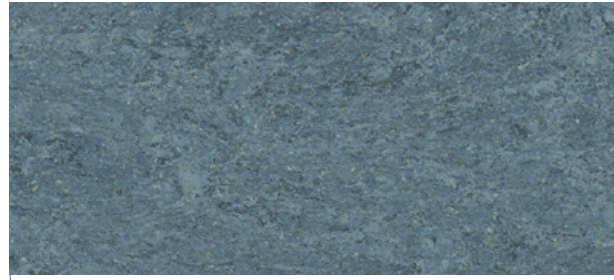
0026 Sky Blue
2.5mm
NCS: 4030-R90B / LRV: 19.7



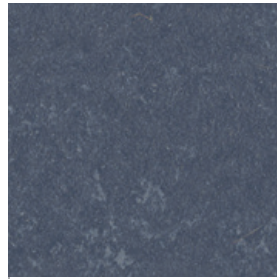
0023 Dusty Blue A R10 Bfl
2.0mm / 2.5mm / 3.2mm
NCS: 4010-R90B / LRV: 30.0



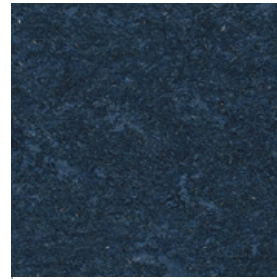
0049 Royal Blue
2.5mm / 3.2mm
NCS: 5020-R70B / LRV: 17.8



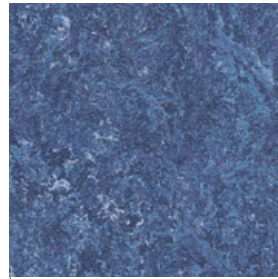
0022 Autumn Blue A+
2.5mm / 3.2mm
NCS: 5010-R90B / LRV: 20.6



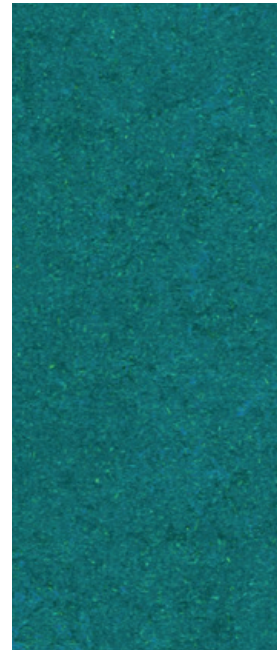
0024 Mystery Blue
2.5mm
NCS: 6020-R90B / LRV: 13.0



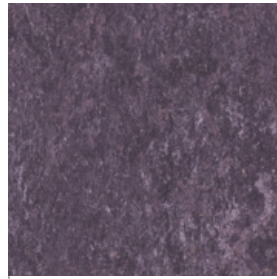
0149 Dark Blue
2.5mm
NCS: 8010-R70B / LRV: 7.2



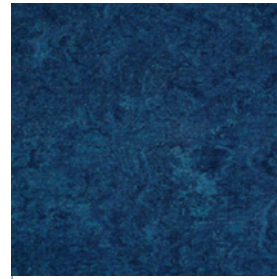
0148 Ink Blue
2.5mm
NCS: 6020-R70B / LRV: 10.8



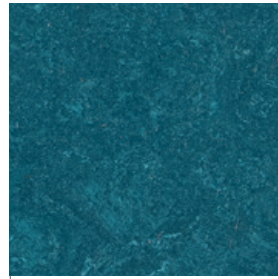
0129 Curacao Petrol A+
2.5mm
NCS: 4040-B60G / LRV: 16.8



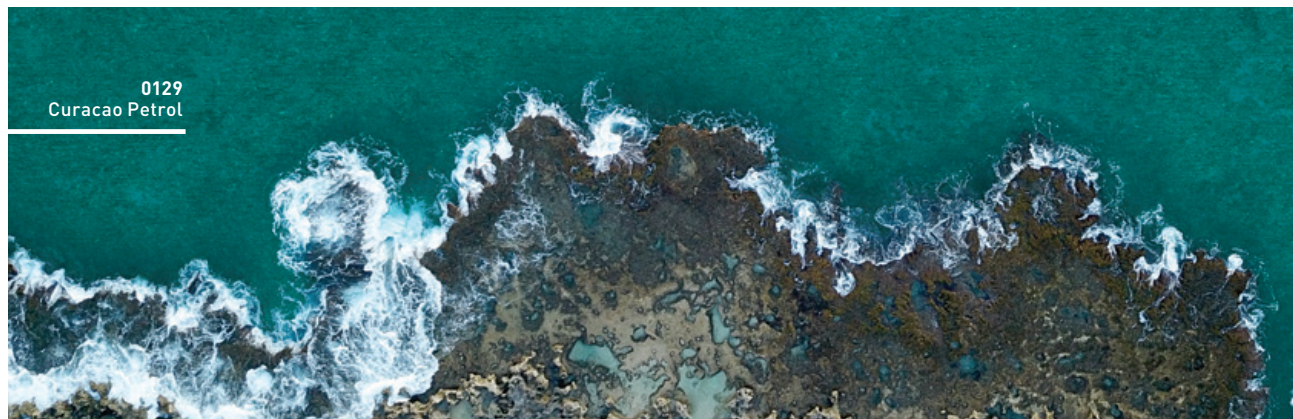
0128 Violet
2.5mm
NCS: 4030-R60B / LRV: 13.8



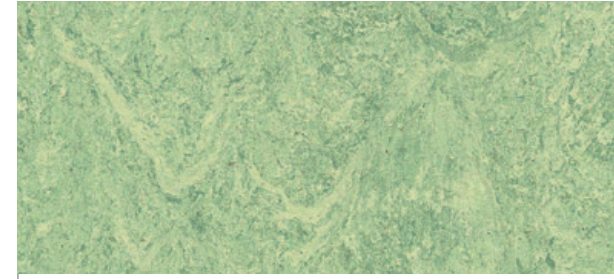
0028 Dive
2.5mm
NCS: 6020-R80B / LRV: 9.4



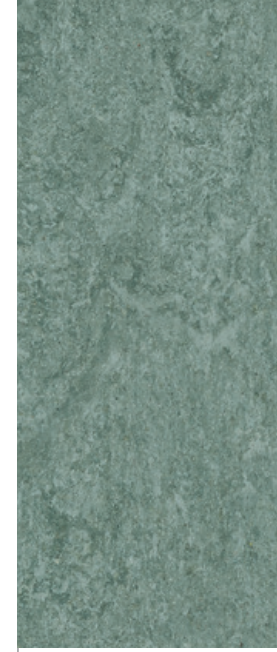
0136 Turquoise Bay
2.5mm
NCS: 6030-B10G / LRV: 9.0



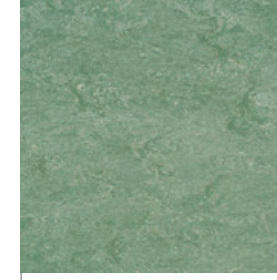
0129
Curacao Petrol



0130 Antique Green A+
2.5mm
NCS: 2020-G50Y / LRV: 45.5



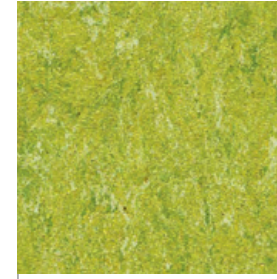
0099 Grey Turquoise
2.5mm
NCS: 4010-B70G / LRV: 27.0



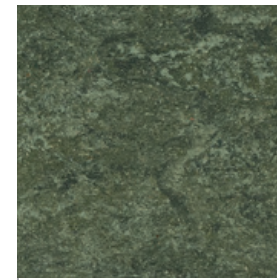
0043 Leaf Green
2.5mm
NCS: 4010-G30Y / LRV: 31.6



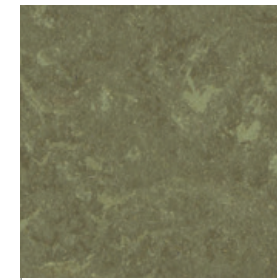
0100 Frog Green
2.5mm
NCS: 3030-G40Y / LRV: 31.4



0132 Lime Green A+
2.5mm
NCS: 2050-G60Y / LRV: 38.1



0083 Jungle
2.5mm
NCS: 6010-G50Y / LRV: 14.9



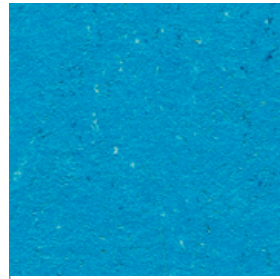
0138 Khaki
2.5mm
NCS: 5020-G90Y / LRV: 19.9



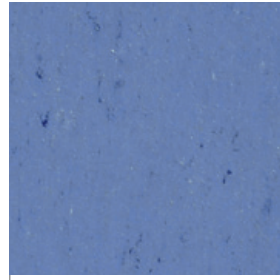
0100
Frog Green

A Acoustic 15dB in stock A+ AcousticPlus 19dB in stock R10 R10: in stock Bfl Bfl-s1: in stock

All other colours can be manufactured in Acoustic 15dB version. Special request - Minimum order quantity: 1500sqm. Below 1500sqm, use Korkment underlayer.
All other colours can be manufactured in AcousticPlus 19dB version. Special request - Minimum order quantity: 58sqm



0123 Poppy Blue
 NCS: 1560-R90B / LRV: 21.9



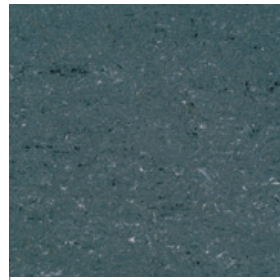
0004 Bluebird
 NCS: 4040-R80B / LRV: 18.6



0132 Spicy Green
 NCS: 1060-G40Y / LRV: 44.1



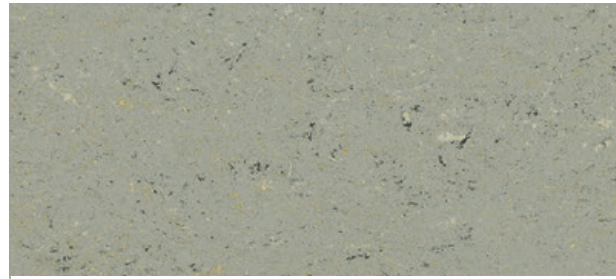
0006 Vivid Green
 NCS: 3040-G20Y / LRV: 24.9



0080 Elephant Grey
 NCS: 6502-B / LRV: 13.5



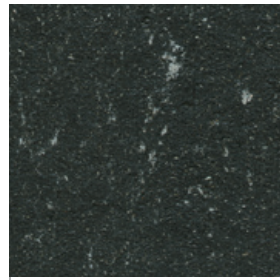
0001 Banana Yellow



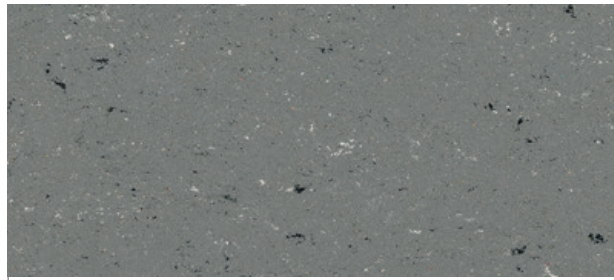
0058 Aluminium Grey
 NCS: 3502-R / LRV: 36.6



0052 Oxyd Grey
 NCS: 2502-Y / LRV: 47.0



0081 Private Black
 NCS: 8502-B / LRV: 7.3



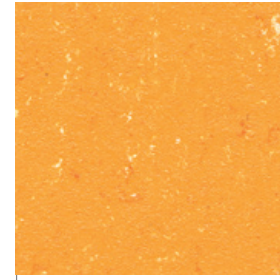
0059 Stone Grey
 NCS: 5500-N / LRV: 22.2



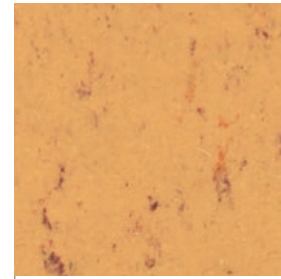
0001 Banana Yellow
 NCS: 2050-Y / LRV: 45.7



0071 Straw Beige
 NCS: 2020-Y30R / LRV: 46.3



0171 Sunrise Orange
 NCS: 1060-Y40R / LRV: 40.7



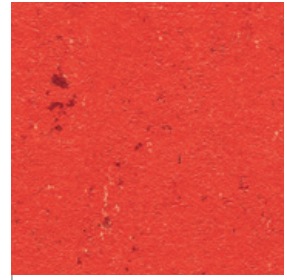
0073 Sand Yellow
 NCS: 2040-Y30R / LRV: 44.8



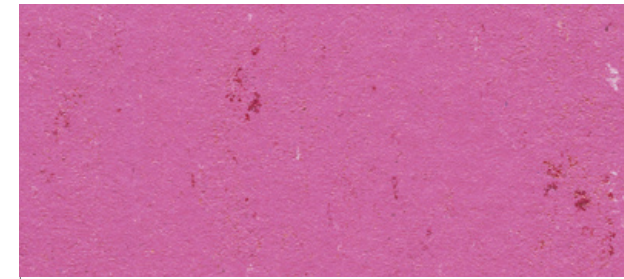
0170 Kumquat Orange
 NCS: 1070-Y70R / LRV: 26.9



0016 Deep Orange
 NCS: 2050-Y60R / LRV: 27.7



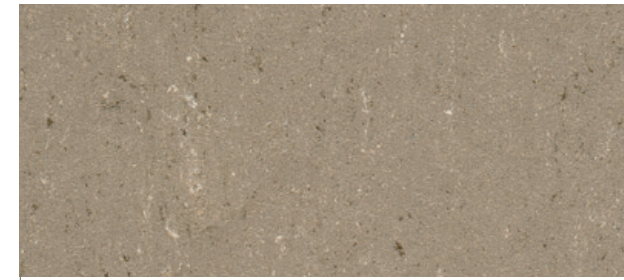
0118 Power Red
 NCS: 1070-Y90R / LRV: 18.9



0110 Cadillac Pink
 NCS: 2050-R30B / LRV: 23.9



0012 Light Beige
 NCS: 3010-Y30R / LRV: 40.2



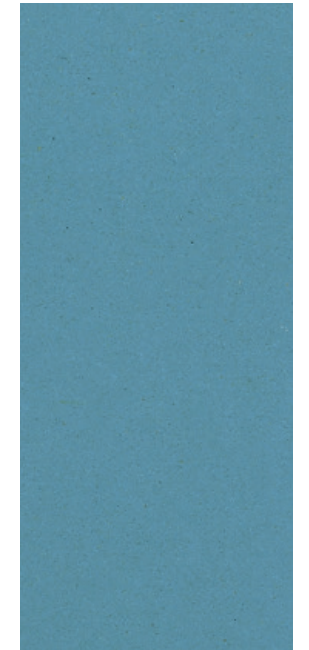
0043 Light Mud
 NCS: 5010-Y30R / LRV: 25.6



0073 Sand Yellow



0059 Frost Grey
NCS: 1502-Y50R / LRV: 59.6



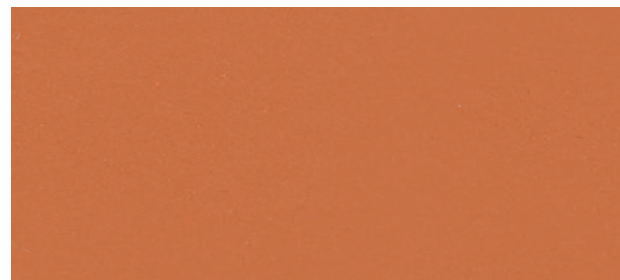
0095 Spring Blue R+
NCS: 3030-B / LRV: 29.1



0081 Nickel Grey
NCS: 4502-R / LRV: 31.5



0100 Ocean Blue
NCS: 5040-R80B / LRV: 8.8



0062 Mediterranean Orange
NCS: 3060-Y70R / LRV: 16.4



0088 Chestnut
NCS: 5040-Y80R / LRV: 9.1



0043 Neutral Beige
NCS: 1515-Y30R / LRV: 51.1



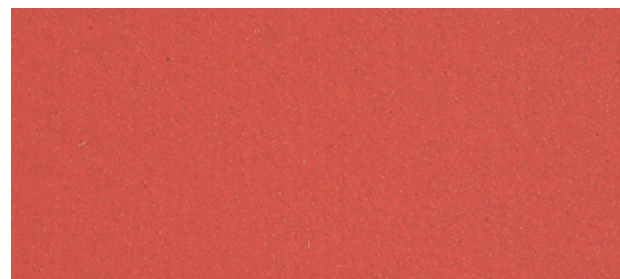
0085 Warm Concrete Grey R+
NCS: 4005-Y20R / LRV: 35.7



0090 Olive R+
NCS: 5020-Y / LRV: 22.3



0082 Broken Grey
NCS: 5502-R / LRV: 20.7



0010 Pompeji Red R+
NCS: 2070-Y90R / LRV: 14.1



0060 Deep Brown
NCS: 7020-Y60R / LRV: 9.2



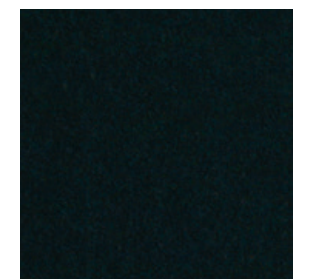
0058 Clay Grey R+
NCS: 6005-Y20R / LRV: 15.8



0035 Racing Green
NCS: 8005-B80G / LRV: 7.6



0083 Architects Grey R+
NCS: 7500-N / LRV: 10.9

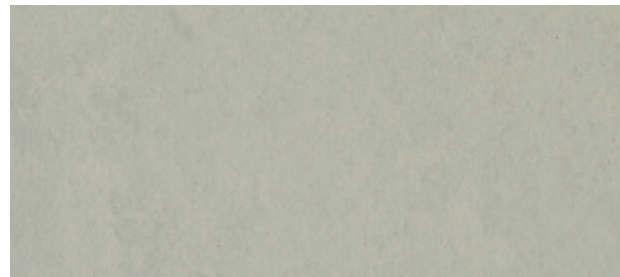


0080 Black
NCS: 8505-R80B / LRV: 4.8

R+ AcousticPlus 19dB in stock

All other colours can be manufactured in Acoustic 15dB version. Special request - Minimum order quantity: 1500sqm. Below 1500sqm, use Korkment underlayer.
All other colours can be manufactured in AcousticPlus 19dB version. Special request - Minimum order quantity: 58sqm

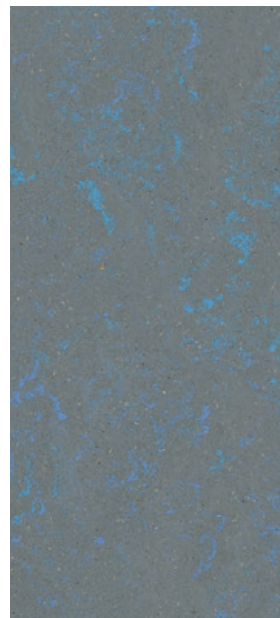
All colours can be manufactured in Acoustic 15dB version. Special request - Minimum order quantity: 1500 qm. Below 1500sqm, use Korkment underlayer.
All colours can be manufactured in AcousticPlus 19dB version. Special request - Minimum order quantity: 58sqm



0552 Silver Grey
NCS: 3005-G50Y / LRV: 41.8



0567 Shining Green
NCS: 4005-G80Y / LRV: 35.2



0566 Shining Blue
NCS: 5005-R80B / LRV: 21.8



0565 Graphite Grey
NCS: 6005-R50B / LRV: 15.3



0562 Titan Grey
NCS: 3000-N / LRV: 41.2



0563 Zinc Grey
NCS: 4502-R / LRV: 27.4



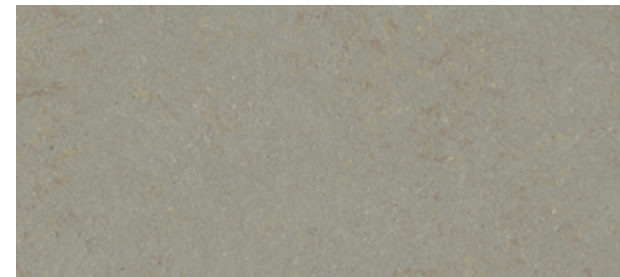
0555 Flashy Street Grey
NCS: 4005-Y20R / LRV: 32.1



0550 Beton Soft Grey
NCS: 4005-Y50R / LRV: 31.7



0556 Mud Grey
NCS: 4010-Y30R / LRV: 33.7



0557 Urban Grey
NCS: 4010-Y50R / LRV: 30.5



0558 Screed Grey
NCS: LRV: 5010-Y10R / 22.8



0564 Natural Stone
NCS: 1505-Y20R / LRV: 59.1



0554 Concrete Grey
NCS: 5005-Y50R / LRV: 25.2



0551 Flashy Asphalt Grey
NCS: 5005-Y80R / LRV: 24.9



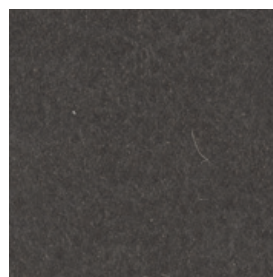
0559 Vintage Grey
NCS: 5005-Y20R / LRV: 24.9



0560 Bold Grey
NCS: 6005-Y50R / LRV: 16.5



0553 Dark Concrete Grey
NCS: 6005-Y50R / LRV: 16.1



0561 Pitch Black
NCS: 8000-N / LRV: 7.1



LINO ART FLOW

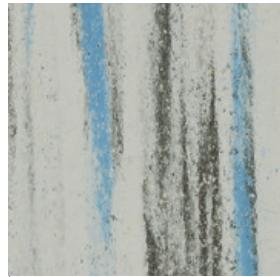


neocare™

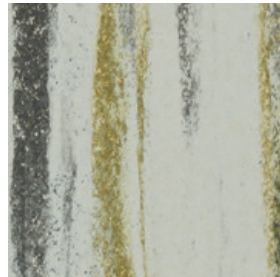
2.5 mm



0024 Magma
NCS: 3010-Y60R / LRV: 47.8



0012 Waterfall
NCS: 2002-Y50R / LRV: 50.3



0005 Bamboo
NCS: 2005-Y20R / LRV: 50.6



0030 Rain
NCS: 2002-Y50R / LRV: 43.3



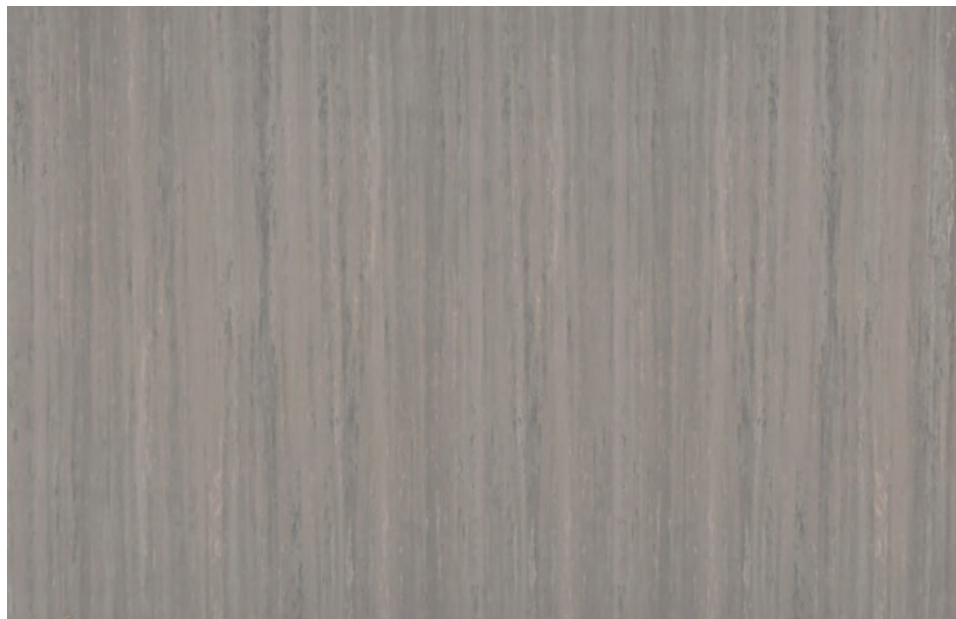
0048 Travertin
NCS: 2010-Y30R / LRV: 55.0



0036 Shaal Concrete
NCS: 2002-Y50R / LRV: 52.6



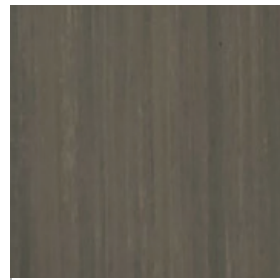
0050 Grey Line
NCS: 5000-N / LRV: 26.0



0043 Pulp Greige
NCS: 5005-Y20R / LRV: 25.4



0083 Light Grey
NCS: 7500-N / LRV: 10.4



0162 Bark
NCS: 6010-Y50R / LRV: 16.0



Lino Art Flow
0083 Light Grey

All colours can be manufactured in Acoustic 15dB version. Special request - Minimum order quantity: 1500 qm. Below 1500sqm, use Korkment underlayer.
All colours can be manufactured in AcousticPlus 19dB version. Special request - Minimum order quantity: 58sqm

LINO ART METALLIC



neocare™

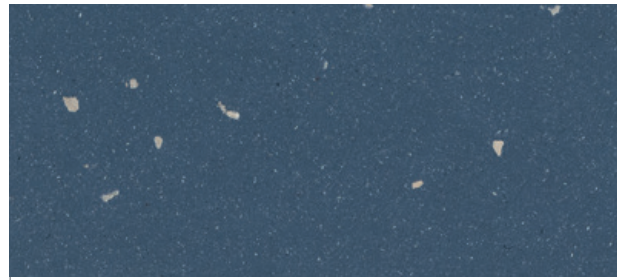
2.5mm

LINO ART STAR

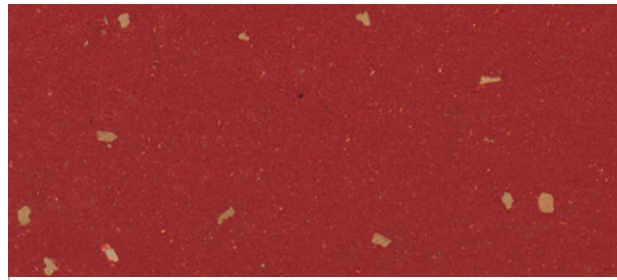


neocare™

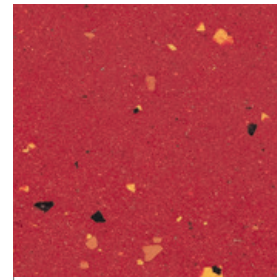
2.5mm



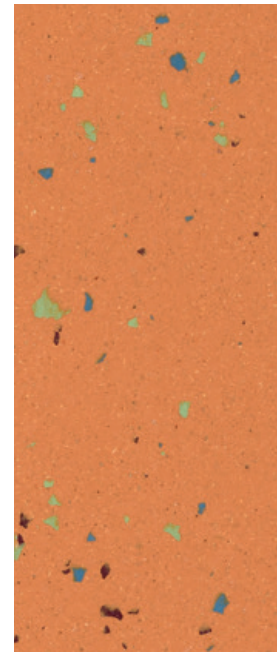
0078 Petrol Blue
NCS: 7010-R70B / LRV: 11.2



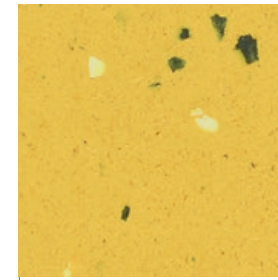
0076 Salsa
NCS: 4050-Y90R / LRV: 10.0



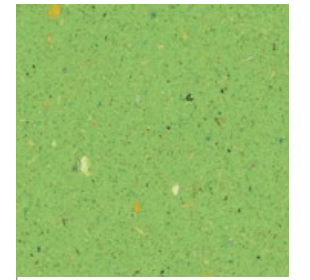
0015 Glaring Red
NCS: 2070-R / LRV: 11.5



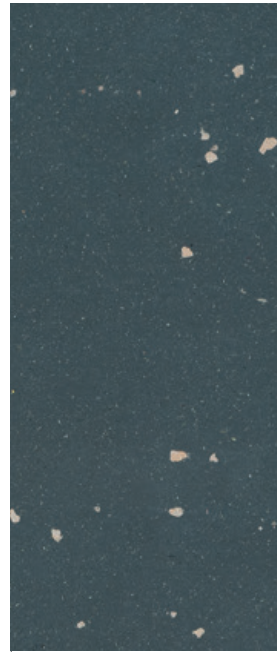
0075 Apricot
NCS: 2050-Y50R / LRV: 29.0



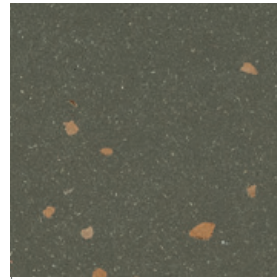
0001 Lemon Yellow
NCS: 1050-Y10R / LRV: 47.9



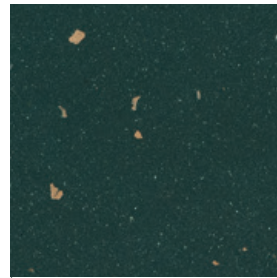
0030 Apple Green
NCS: 2050-G40Y / LRV: 35.0



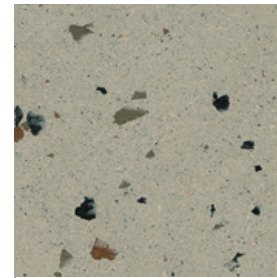
0070 Cool Grey
NCS: 7005-B20G / LRV: 11.1



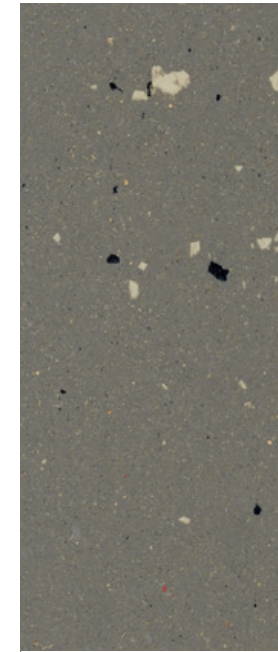
0072 Olive Green
NCS: 7005-Y50R / LRV: 13.5



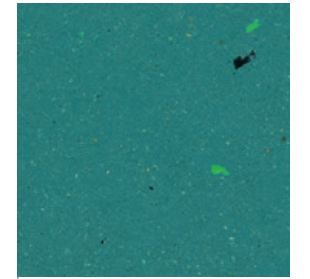
0068 Bottle Green
NCS: 8005-B80G / LRV: 7.2



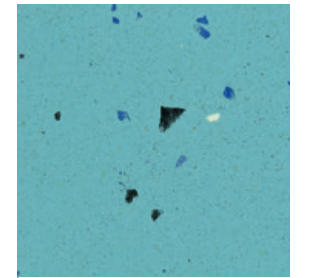
0092 Stratiatella
NCS: 4005-Y20R / LRV: 35.4



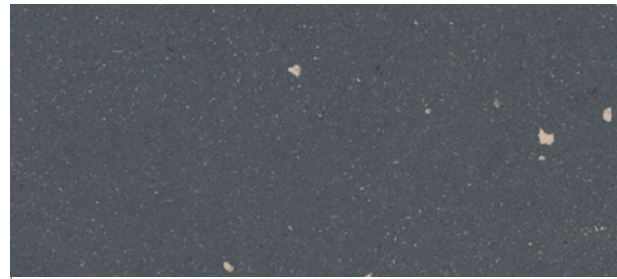
0059 Dusty Grey
NCS: 5005-Y50R / LRV: 20.9



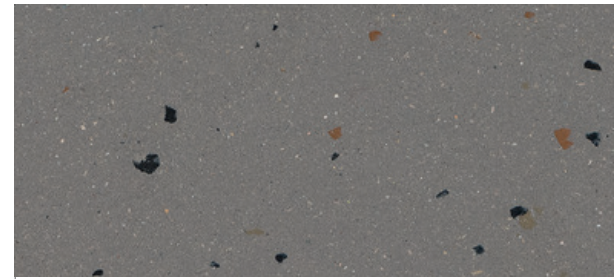
0023 Blue Turquoise
NCS: 5030-B50G / LRV: 16.0



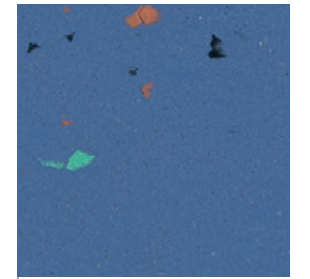
0020 Aqua Turquoise
NCS: 2040-B / LRV: 33.9



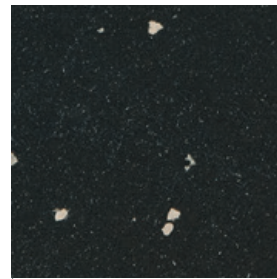
0083 Alumino Light Grey
NCS: 7500-N / LRV: 11.0



0090 Smooth Grey
NCS: 6005-Y80R / LRV: 17.5



0025 Clear Blue
NCS: 5030-R70B / LRV: 13.4



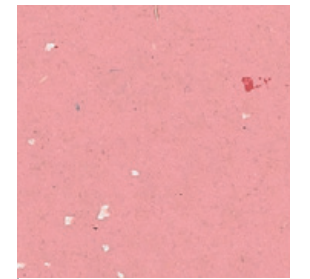
0080 Firmament Black
NCS: 8500-N / LRV: 5.0



0074 Burned Siena
NCS: 8005-Y80R / LRV: 6.7

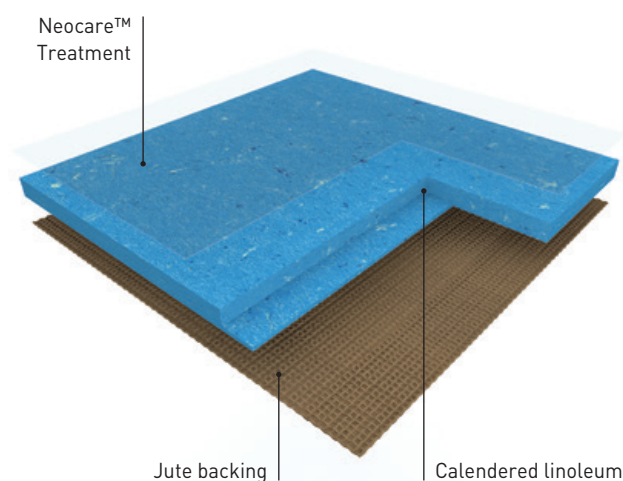


0085 Mid Grey
NCS: 8000-N / LRV: 8.2



0094 Bubble Gum
NCS: 1040-R / LRV: 42.5

COMPACT LINOLEUM neocare™



ARABESQUE is a calendered linoleum compact floorcovering in sheet, 2m wide, providing excellent resistance to everyday wear and tear in high traffic areas. Its weight is 2900g/sqm in 2.5mm. It features a marbled design and presents a matt finish, is composed of 98% natural materials (linseed oil, wood flour, resins, cork, minerals and jute fabric) among of which 76% are rapidly renewable.



LINO ART is a calendered linoleum compact floorcovering in sheet, 2m wide, providing excellent resistance to everyday wear and tear in high traffic areas. Its weight is 2900g/sqm in 2.5mm. It features a striated design (FLOW), a scattered metallic design (METALLIC), a scattered colour chips design (STAR), a concrete design (URBAN) and presents a matt finish, is composed of 98% natural materials (linseed oil, wood flour, resins, cork, minerals and jute fabric) among of which 76% are rapidly renewable.



COLORETTE is a calendered linoleum compact floorcovering in sheet, 2m wide, providing excellent resistance to everyday wear and tear in high traffic areas. Its weight is 2900g/sqm in 2.5mm. It features a speckled design and presents a matt finish, is composed of 98% natural materials (linseed oil, wood flour, resins, cork, minerals and jute fabric) among of which 76% are rapidly renewable.

ARABESQUE, COLORETTE, MARMORETTE, UNI WALTON, LINO ART

The floorings are produced with Neocare™ solvent-free surface treatment, an exclusive photo-cured acrylate based lacquer surface treatment obtained by triple laser UV cross linking. Neocare™ offers excellent scratch resistance as well as resistance to chemicals found in aggressive environments such as bleach, hydro alcoholic solutions, Betadine and Eosin as well as markers making maintenance easier and increasing the life of the flooring. This treatment avoids performing any polishing throughout the lifetime of the product. It can however be polished following usual recommendations and according to the customer's wishes.



MARMORETTE is a calendered linoleum compact floorcovering in sheet, 2m wide, providing excellent resistance to everyday wear and tear in high traffic areas. Its weight is 2400g/sqm in 2.0mm, 2900g/sqm in 2.5mm and 3800g/sqm in 3.2mm. It features a marbled design and presents a matt finish, is composed of 98% natural materials (linseed oil, wood flour, resins, cork, minerals and jute fabric) among of which 76% are rapidly renewable.

The products ensure perfect indoor air quality (TVOC at 28 days (EN 16516) < 10 microgram/m³) and are classified A+ (the best class) in the context of health labeling. It is Floorscore®, M1 and Blue Angel certified. The floorings are 100% recyclable, are composed of minimum 25% recycled content and up to 40% recycled content, 100% controlled, are REACH compliant and rated Cfl-s1 for fire resistance. Designed and manufactured in a sustainable way in a plant awarded with ISO 9001 (quality), ISO 14001 (environment) and ISO 50001 (energy) certifications, the floorings are Cradle to Cradle certified™ Silver. They are Environmental Performance Declaration (EPD) certified by an external laboratory indicating carbon neutrality during the first stages of their life cycle ("from cradle to gate"). The Camouflage (Arabesque, Marmorette) or Uni (Colorette, Uni Walton, Lino Art) welding rod makes the connections between the strips invisible. They are antistatic, antibacterial according to ISO 22196 / JIS Z 2801 and antiviral according to ISO 21702.







UNI WALTON is a calendered linoleum compact floorcovering in sheet, 2m wide, providing excellent resistance to everyday wear and tear in high traffic areas. Its weight is 2900g/sqm in 2.5mm. It features a uni design and presents a matt finish, is composed of 98% natural materials (linseed oil, wood flour, resins, cork, minerals and jute fabric) among of which 76% are rapidly renewable.



Colorette
0123 Poppy Blue

COMPACT LINOLEUM neocare™


TECHNICAL DATA

DESCRIPTION	MARMORETTE		ARABESQUE / COLORETTE / UNI WALTON		LINO ART URBAN / FLOW / METALLIC / STAR	
			R10*	Bfl-s1*		
Total thickness	EN ISO 24346	mm	2.0 / 2.5 / 3.2	2.5	2.5	2.5
Backing	-	-	Jute fabric		Jute fabric	Jute fabric
Weight	EN ISO 23997	g/sqm	2400 / 2900 / 3800	2900	2900	2900
Width of sheet	EN ISO 24341	cm	200		200	200
Length of sheet	EN ISO 24341	m	20-31		20-31	20-31
CLASSIFICATION						
Norm/Product specification	-	-	EN ISO 24011		EN ISO 24011	EN ISO 24011
European classification	EN ISO 10874	class	23 / 34 / 43		23 / 34 / 43	23 / 34 / 43
Fire rating	EN 13501-1	class	Cfl-s1**		Cfl-s1**	Cfl-s1**
Slip resistance	ASR A1.5 / DIN 51130 - BGR 181	class	R9	R10*	R9	R9
Impact sound insulation	EN ISO 717-2	dB	3dB / 5dB / 6dB	5dB	5dB	5dB
PERFORMANCES						
Residual indentation	EN ISO 24343-1	mm	≤ 0.09 / ≤ 0.11	≤ 0.11	≤ 0.11	≤ 0.11
Colour fastness	EN ISO 105 - B02	Rating	6		6	6
Point contact resistance	VDE 0100	kOhm	> 200		> 200	> 200
Static electrical propensity	EN 1815	kV	≈ 2.0		≈ 2.0	≈ 2.0
Castor chair test (Type W)	ISO 4918	-	OK		OK	OK
Flexibility	ISO 24344	mm	Ø 20 (2.5 mm)		Ø 20	Ø 20
Thermal resistance	EN 12667	sqm,K/W	0.012 / 0.015 / 0.018	0.015	0.015	0.015
Thermal conductivity	EN ISO 10456	W/(m.K)	0.17		0.17	0.17
Surface treatment	-	-	Neocare™		Neocare™	Neocare™
Chemical products resistance	EN ISO 26987	-	OK		OK	OK
Anti-bacterial activity (E. coli - S. aureus - MRSA) after 24 h***	EN ISO 22196 / JIS Z 2801	-	> 99.99% inhibits growth		> 99.99% inhibits growth	> 99.99% inhibits growth
Anti-viral activity (Human coronavirus) after 5 h***	ISO 21702	-	> 98.65% virucidal activity		> 98.65% virucidal activity	> 98.65% virucidal activity
INDOOR AIR QUALITY						
TVOC after 28 days	EN 16516	microgram/m³	< 10		< 10	< 10
CIRCULAR ECONOMY						
Certification	Cradle to Cradle	-	Silver	Silver	-	Silver
CE MARKING						
CE	EN 14041: 2004 AC: 2006	-				

* Only in colours: 0053 / 0059 / 0045 / 0070 / 0023

** Glued according to certificate. / DOP numbers available from your local branch.

*** The implementation of an effective cleaning method is the best defence against infection.

 Depending on light exposure, the product colour can vary due to the natural oxidation process of linoleum. This process is reversible. We recommend that the samples be exposed to sunlight for several hours prior to making a final color choice.



Colorette
0012 Light Beige

Colorette
0001 Banana Yellow

ACOUSTIC LINOLEUM

MARMORETTE ACOUSTIC



0019 Sunset Orange
NCS: 3040-Y60R / LRV: 27.3



0098 Desert Beige
NCS: 2020-Y40R / LRV: 49.9



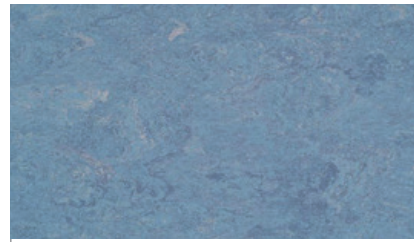
0045 Sand Beige
NCS: 2005-Y50R / LRV: 53.2



0059 Plumb Grey
NCS: 7005-R50B / LRV: 11.3



0053 Ice Grey
NCS: 4000-N / LRV: 31.2

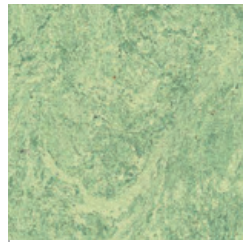


0023 Dusty Blue
NCS: 4010-R90B / LRV: 30.0

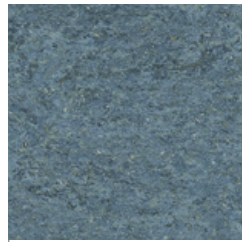
MARMORETTE ACOUSTICPLUS



0129 Curacao Petrol
NCS: 4040-B60G / LRV: 16.8



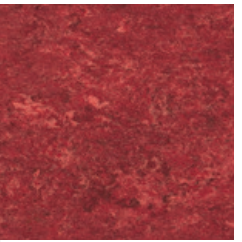
0130 Antique Green
NCS: 2020-G50Y / LRV: 45.5



0022 Autumn Blue
NCS: 5010-R90B / LRV: 20.6



0132 Lime Green
NCS: 2050-G60Y / LRV: 38.1



0018 Lobster Red
NCS: 4040-R / LRV: 10.6



0073 Spicy Orange
NCS: 3040-Y50R / LRV: 24.7



0070 Rocky Brown
NCS: 2020-Y40R / LRV: 40.2



0040 Light Sahara
NCS: 1515-Y30R / LRV: 52.7



0164 Milk Coffee
NCS: 5010-Y50R / LRV: 18.9



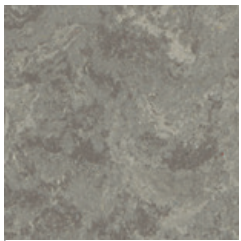
0096 Midnight Grey
NCS: 8000-N / LRV: 7.3



0059 Plumb Grey
NCS: 7005-R50B / LRV: 11.3



0053 Ice Grey
NCS: 4000-N / LRV: 31.2



0166 Clay
NCS: 4005-Y20R / LRV: 28.4



0158 Tabac Grey
NCS: 6502-R / LRV: 14.8

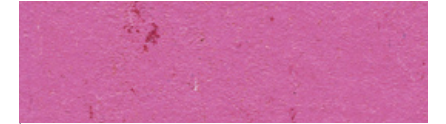
COLORETTE ACOUSTICPLUS



0001 Banana Yellow
NCS: 2050-Y / LRV: 45.7



0170 Kumquat Orange
NCS: 1070-Y70R / LRV: 26.9



0110 Cadillac Pink
NCS: 2050-R30B / LRV: 23.9



0132 Spicy Green
NCS: 1060-G40Y / LRV: 44.1



0123 Poppy Blue
NCS: 1560-R90B / LRV: 21.9



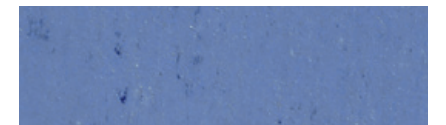
0012 Light Beige
NCS: 3010-Y30R / LRV: 40.2



0059 Stone Grey
NCS: 5500-N / LRV: 22.2

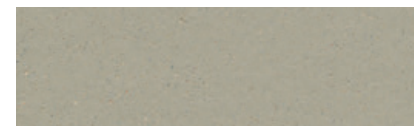


0080 Elephant Grey
NCS: 6502-B / LRV: 13.5



0004 Bluebird
NCS: 4040-R80B / LRV: 18.6

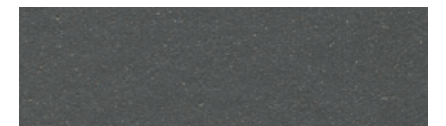
UNI WALTON ACOUSTICPLUS



0085 Warm Concrete Grey
NCS: 4005-Y20R / LRV: 35.7



0058 Clay Grey
NCS: 6005-Y20R / LRV: 15.8



0083 Architects Grey
NCS: 7500-N / LRV: 10.9



0095 Spring Blue
NCS: 3030-B / LRV: 29.1



0090 Olive
NCS: 5020-Y / LRV: 22.3

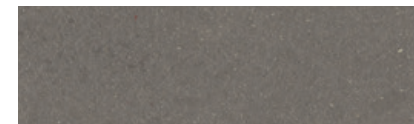


0010 Pompeii Red
NCS: 2070-Y90R / LRV: 14.1

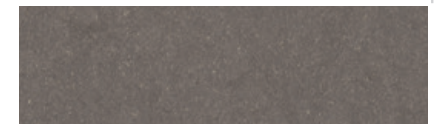
LINO ART URBAN ACOUSTIC PLUS



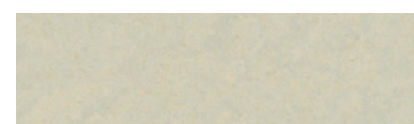
0554 Concrete Grey
NCS: 5005-Y50R / LRV: 25.2



0560 Bold Grey
NCS: 6005-Y50R / LRV: 16.5



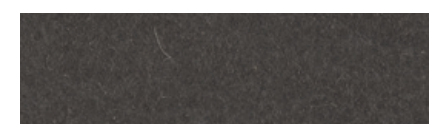
0553 Dark Concrete Grey
NCS: 6005-Y50R / LRV: 16.1



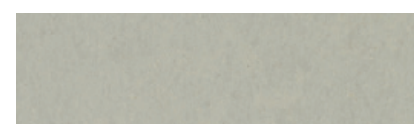
0564 Natural Stone
NCS: 1505-Y20R / LRV: 59.1



0558 Screed Grey
NCS: LRV: 5010-Y10R / 22.8



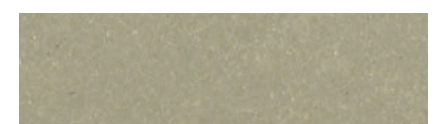
0561 Pitch Black
NCS: 8000-N / LRV: 7.1



0552 Silver Grey
NCS: 3005-G50Y / LRV: 41.8



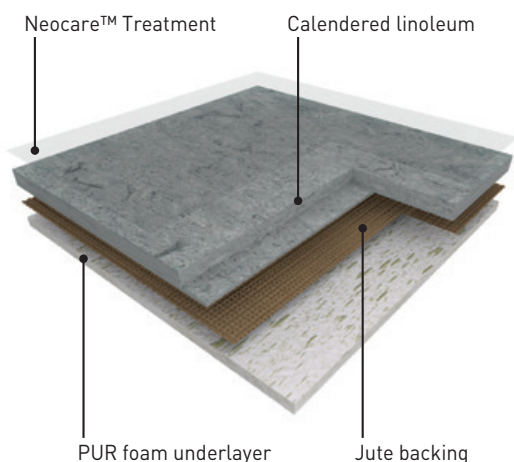
0555 Flashy Street Grey
NCS: 4005-Y20R / LRV: 32.1



0556 Mud Grey
NCS: 4010-Y30R / LRV: 33.7

All other colors can be manufactured in Acoustic 15dB version. Special request - Minimum order quantity: 1200sqm. Below 1200sqm, use Korkment underlayer.
All other colors can be manufactured in AcousticPlus 19dB version. Special request - Minimum order quantity: 58sqm

ACOUSTIC LINOLEUM neocare™



MARMORETTE ACOUSTICPLUS is a calendered linoleum acoustic floorcovering in sheet, 2m wide, providing excellent resistance to everyday wear and tear in high traffic areas.

Its weight is 3500g/sqm in 4.0mm.

It features a marbled design and presents a matt finish, is composed of natural materials (linseed oil, wood flour, resins, cork, minerals and jute fabric), rapidly renewable and features a 1.5mm recycled foam underlayer, ensuring up to 19dB impact sound reduction.

COLORETTE ACOUSTICPLUS is a calendered linoleum acoustic floorcovering in sheet, 2m wide, providing excellent resistance to everyday wear and tear in high traffic areas.

Its weight is 3500g/sqm in 4.0mm.

It features a speckled design and presents a matt finish, is composed of natural materials (linseed oil, wood flour, resins, cork, minerals and jute fabric), rapidly renewable and features a 1.5mm recycled foam underlayer, ensuring up to 19dB impact sound reduction.

UNI WALTON ACOUSTICPLUS is a calendered linoleum acoustic floorcovering in sheet, 2m wide, providing excellent resistance to everyday wear and tear in high traffic areas.

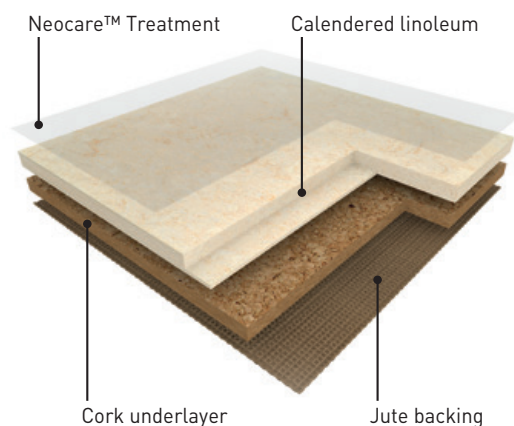
Its weight is 3500g/sqm in 4.0mm.

It features a uni design and presents a matt finish, is composed of natural materials (linseed oil, wood flour, resins, cork, minerals and jute fabric), rapidly renewable and features a 1.5mm recycled foam underlayer, ensuring up to 19dB impact sound reduction.

LINO ART URBAN ACOUSTIC PLUS is a calendered linoleum acoustic floorcovering in sheet, 2m wide, providing excellent resistance to everyday wear and tear in high traffic areas.

Its weight is 3500g/sqm in 4.0mm.

It features a concrete design and presents a matt finish, is composed of natural materials (linseed oil, wood flour, resins, cork, minerals and jute fabric), rapidly renewable and features a 1.5mm recycled foam underlayer, ensuring up to 19dB impact sound reduction.



MARMORETTE ACOUSTIC is a calendered linoleum acoustic floorcovering in sheet, 2m wide, providing excellent resistance to everyday wear and tear in high traffic areas.

Its weight is 3900g/sqm in 4.0mm. It features a marbled design and presents a matt finish, is composed of natural materials (linseed oil, wood flour, resins, cork, minerals and jute fabric), rapidly renewable and features a 2mm cork underlayer, ensuring up to 15dB impact sound reduction.

ACOUSTIC LINOLEUM

The floorings are produced with Neocare™ solvent-free surface treatment, an exclusive photo-cured acrylate based lacquer surface treatment obtained by triple laser UV cross linking. Neocare™ offers excellent scratch resistance as well as resistance to chemicals found in aggressive environments such as bleach, hydro alcoholic solutions, Betadine and Eosin as well as markers making maintenance easier and increasing the life of the flooring. This treatment avoids performing any polishing throughout the lifetime of the product. It can however be polished following usual recommendations and according to the customer's wishes.

The products ensure perfect indoor air quality (TVOC at 28 days [EN 16516] < 10 microgram/m³) and are classified A+ (the best class) in the context of health labeling. They are Floorscore®, M1 and Blue Angel certified. The floorings are 100% recyclable, are composed of minimum 25% recycled content and up to 40% recycled content, 100% controlled, are REACH compliant and rated Cfl-s1 for fire resistance.

Designed and manufactured in a sustainable way in a plant awarded with ISO 9001 (quality), ISO 14001 (environment) and ISO 50001 (energy) certifications, the floorings are Cradle to Cradle certified™ Bronze (Marmorette AcousticPlus, Colorette AcousticPlus) and Cradle to Cradle certified™ Silver (Marmorette Acoustic). Their Environmental Performance Declaration (EPD) certified by an external laboratory, indicate carbon neutrality during the first stages of their life cycle ("from cradle to gate").

The Camouflage (Arabesque, Marmorette) or Uni (Colorette, Uni Walton, Lino Art) welding rod makes the connections between the strips invisible.

They are antistatic, antibacterial according to ISO 22196 / JIS Z 2801 and antiviral according to ISO 21702.



KORKMENT: CORK ACOUSTIC UNDERLAYER

2.0mm underlayer (weight 1.2kg/sqm),
15 dB impact sound reduction

Ref R1020102

MARMORETTE ACOUSTICPLUS 19dB
COLORETTE ACOUSTICPLUS 19dB
UNI WALTON ACOUSTICPLUS 19dB
LINO ART URBAN ACOUSTIC PLUS 19dB

MARMORETTE ACOUSTIC
15dB

DESCRIPTION				
Total thickness	EN ISO 24346	mm	4.0	4.0
Backing	-	-	Foam backing	Cork and jute fabric
Thickness of cork / foam backing	EN ISO 24340	mm	1.5	2.0
Weight	EN ISO 23997	g/sqm	3500	3900
Width of sheet	EN ISO 24341	cm	200	200
Length of sheet	EN ISO 24341	m	20-31***	20-31
CLASSIFICATION				
Norm / Product specification	-	-	EN 686	EN 687
European classification	EN ISO 10874	class	23 / 33 / 41	23 / 33 / 41
Fire rating	EN 13501-1	class	Cfl-s1*	Cfl-s1*
Slip resistance	ASR A1.5 / DIN 51130 - BGR 181	class	R9	R9
Impact sound insulation	EN ISO 717-2	dB	19dB	15dB
PERFORMANCES				
Residual indentation	EN ISO 24343-1	mm	≤ 0.30	≤ 0.40
Colour fastness	EN ISO 105 - B02	degree	6	6
Point contact resistance	VDE 0100	kOhm	> 200	> 200
Static electrical propensity	EN 1815	kV	2.0	2.0
Castor chair test (Type W)	ISO 4918	-	OK	OK
Thermal resistance	EN 12667	sqm,K/W	0.044	0.04
Thermal conductivity	EN ISO 10456	W/(m.K)	0.0937	0.17
Surface treatment	-	-	Neocare™	Neocare™
Chemical products resistance	EN ISO 26987	class	OK	OK
Anti-bacterial activity [E. coli - S. aureus - MRSA]** after 24 hours	EN ISO 22196 / JIS Z 2801	-	> 99.99% inhibits growth	> 99.99% inhibits growth
Anti-viral activity (Human coronavirus) after 5h*	ISO 21702	-	> 98.65 % virucidal activity	> 98.65 % virucidal activity
INDOOR AIR QUALITY				
TVOC after 28 days	EN 16516	microgram/m ³	< 10	< 10
CIRCULAR ECONOMY				
Certification	Cradle to Cradle	-	Bronze	Silver
CE MARKING				
CE	EN 14041: 2004 AC: 2006	-		

* Glued according to certificate.

** The implementation of an effective cleaning method is the best defense against infection.

*** Roll dimension 1.96m x 18-291m for single roll production

DOP numbers available from your local branch.

Depending on light exposure, the product colour can vary due to the natural oxidation process of linoleum. This process is reversible. We recommend that the samples be exposed to sunlight for several hours prior to making a final color choice.



TECHNIC LINOLEUM

Linodur
0020 Spring Blue

LINODUR



HIGH MECHANICAL TRAFFIC RESISTANCE



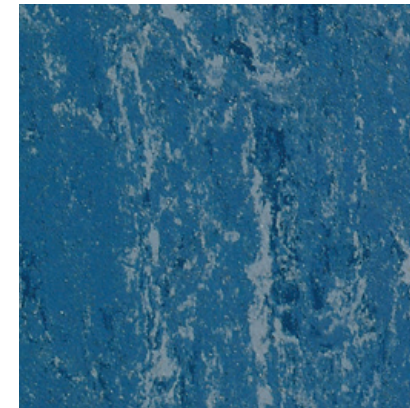
0056 Marble Grey
NCS: 3502-Y / LRV: 36.0



0020 Spring Blue
NCS: 3020-B / LRV: 21.0



0081 Sporty Black
NCS: 8500-N / LRV: 6.0



0024 Speckled Blue
NCS: 4040-R80B / LRV: 14.0



0072 Peach Orange
NCS: 2060-Y40R / LRV: 30.0

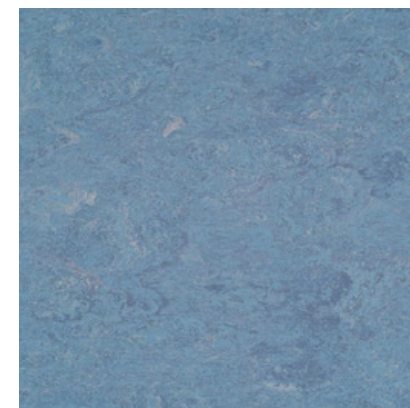


0011 Avocado Green
NCS: 2050-G30Y / LRV: 29.0

MARMORETTE LCH



DISSIPATIVE LINOLEUM FOR ESD AREAS



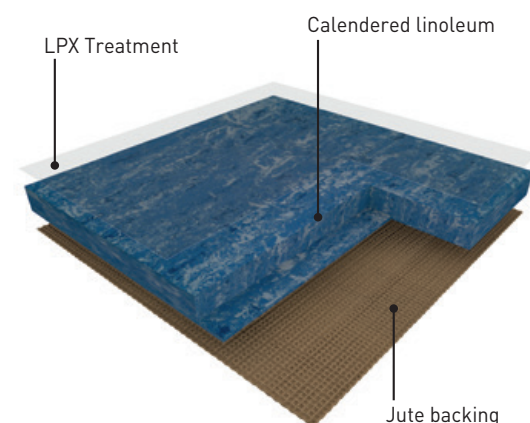
0023 Dusty Blue
NCS: 4010-R90B / LRV: 30.0



0055 Ash Grey
NCS: 3502-B / LRV: 39.0

LINODUR

HIGH MECHANICAL TRAFFIC RESISTANCE



LINODUR is a calendered linoleum compact floorcovering in sheet, 2m wide, providing excellent resistance to everyday wear and tear in high pedestrian and mechanical traffic areas and has been designed to resist a 30kg/sqm dynamic load.

Its weight is 4700g/sqm in 4.0mm.

It features a moiré design and is composed of 98% natural materials (linseed oil, wood flour, resins, cork, minerals and jute fabric) among of which 76% are rapidly renewable.

The flooring is equipped with LPX surface treatment, making the maintenance easy and the flooring long lasting.

The Camouflage welding rod makes the connections between the strips invisible.

It is antistatic, antibacterial according to ISO 22196 / JIS Z 2801.

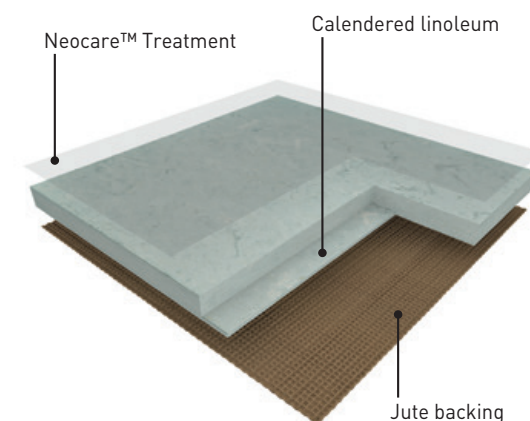
The flooring is 100% recyclable, is composed of minimum 25% recycled content and up to 40% recycled content, 100% controlled, is REACH compliant and rated Cfl-s1 for fire resistance.

This product is manufactured in a plant awarded with ISO 9001 (quality), ISO 14 001 (environment) and ISO 50001 (energy) certifications.

The product also benefits from international certifications such as Floorscore® and Blue Angel (emissions).

MARMORETTE LCH

DISSIPATIVE LINOLEUM FOR ESD AREAS



MARMORETTE LCH is a calendered linoleum compact dissipative floorcovering in sheet, 2m wide, providing excellent resistance to everyday wear and tear in high traffic areas.

Its vertical resistance is $10^6 < R < 10^8 \Omega$.

Its weight is 3000g/sqm in 2.5mm.

It features a marbled design and presents a matt finish, is composed of 98% natural materials (linseed oil, wood flour, resins, cork, minerals and jute fabric) among of which 76% are rapidly renewable.

The flooring is produced with Neocare™ solvent-free surface treatment, an exclusive photo-cured acrylate based lacquer surface treatment obtained by triple laser UV cross linking. Neocare™ offers excellent scratch resistance as well as resistance to chemicals found in aggressive environments such as bleach, hydro alcoholic solutions, Betadine and Eosin as well as markers making maintenance easier and increasing the life of the flooring. This treatment avoids performing any polishing throughout the lifetime of the product. It can however be polished following usual recommendations and according to the customer's wishes. The flooring is 100% recyclable, is composed of minimum 25% recycled content and up to 40% recycled content, 100% controlled, is REACH compliant and rated Cfl-s1 for fire resistance.

It is designed and manufactured in a sustainable way in a plant awarded with ISO 9001 (quality), ISO 14001 (environment) and ISO 50001 (energy) certifications.

The Camouflage welding rod makes the connections between the strips invisible.

It is antistatic, antibacterial according to ISO 22196 / JIS Z 2801.

			LINODUR	MARMORETTE LCH
--	--	--	---------	----------------

DESCRIPTION				
Total thickness	EN ISO 24346	mm	4.0	2.5
Backing	-	-	Jute fabric	Jute fabric
Weight	EN ISO 23997	g/sqm	4700	3000
Width of sheet	EN ISO 24341	cm	200	200
Length of sheet	EN ISO 24341	m	20-31	20-31

CLASSIFICATION				
Norm / Product specification	-	-	EN ISO 24011	EN ISO 24011
European classification	EN ISO 10874	class	23 / 34 / 43	23 / 34 / 43
Fire rating	EN 13501-1	class	Cfl-s1*	Cfl-s1*
Slip resistance	ASR A1.5 / DIN 51130 - BGR 181	class	R9	R9
Barefoot slipping	DIN 51097	class	A	-
Impact sound insulation	EN ISO 717-2	dB	6dB	3dB

PERFORMANCES				
Residual indentation	EN ISO 24343-1	mm	≤ 0.20	≤ 0.15
Colour fastness	EN ISO 105 - B02	degree	6	6
Vertical resistance	EN 1081	Ohm	-	$10^6 \leq R \leq 10^8$
Point contact resistance	VDE 0100	kOhm	> 200	> 100
Static electrical propensity	EN 1815	kV	2.0	2.0
Castor chair test (Type W)	ISO 4918	-	OK	OK
Thermal resistance	EN 12667	sqm,K/W	0.023	0.015
Thermal conductivity	EN ISO 10456	W/(m.K)	0.17	0.17
Surface treatment	-	-	LPX	Neocare™
Chemical products resistance	EN ISO 26987	class	OK	
Anti-bacterial activity (E. coli - S. aureus - MRSA)** after 24 hours	EN ISO 22196 / JIS Z 2801	-	> 99.99% inhibits growth	> 99.99% inhibits growth
Anti-viral activity (Human coronavirus) after 5h*	ISO 21702	-	-	> 98.65 % virucidal activity

INDOOR AIR QUALITY				
TVOC after 28 days	EN 16516	microgram/m³	-	< 10

CE MARKING				
CE	EN 14041: 2004 AC: 2006	-		

* Glued according to certificate.

** The implementation of an effective cleaning method is the best defense against infection.

DOP numbers available from your local branch.

Depending on light exposure, the product colour can vary due to the natural oxidation process of linoleum. This process is reversible. We recommend that the samples be exposed to sunlight for several hours prior to making a final color choice.

MORE THAN A FLOOR... WALL & FINISHES

For more details visit gerflor.com



FLOOR PROTECTION



REF.: 058X0001

KORKMENT: CORK ACOUSTIC UNDERLAYER



REF.: R1020102

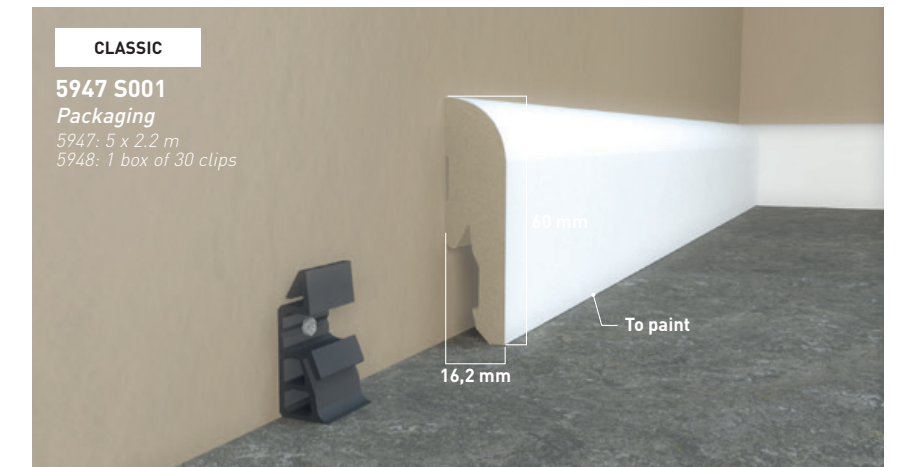
2mm

WELDING ROD



Welding rod matching table available on: gerflor.com

SKIRTINGS MDF



CLASSIC

5947 S001

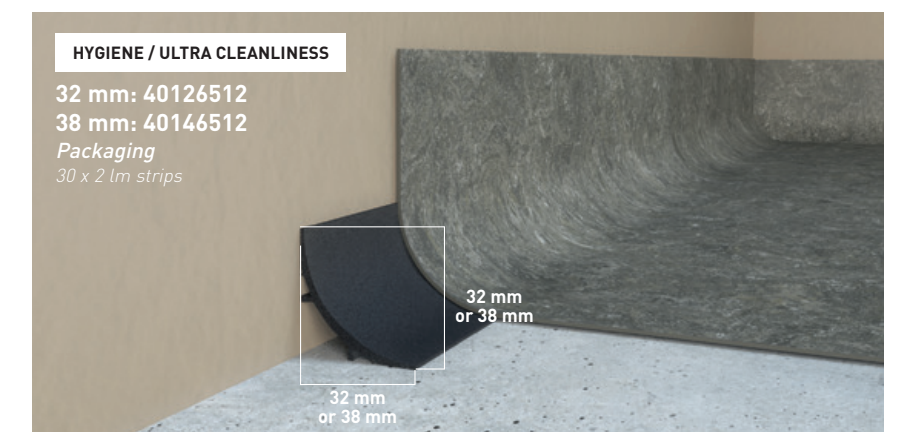
Packaging

5947: 5 x 2,2 m

5948: 1 box of 30 clips

Color: White

SKIRTINGS COVE FORMER



HYGIENE / ULTRA CLEANLINESS

32 mm: 40126512

38 mm: 40146512

Packaging

30 x 2 lm strips

Color: 6512

SKIRTINGS HSLA





HYGIENE / ULTRA CLEANLINESS

	Code
Compact 2.0mm	8009999
Compact 2.5mm	8019999
Compact 3.2mm	8029999
Conductive [LCH]	8049999

CLEANING NEOCARE™-TREATED LINOLEUM FLOORS

Marmorette / Arabesque / Colorette
Uni Walton / Lino Art















 **Damp sweeping equipment**
Flexible mop preferably fitted with disposable, antistatic and/or pre-impregnated gauze strips

 **Manual washing equipment**
Disposable microfibre mop or gauze

 **Single disk machine**

 **Autoscrubber**

 **Mechanical cleaning disk**
3M (or equivalent) colour disks

	Equipment used	Cleaning products	Cleaning methods
First use Manual or mechanical cleaning	    or  if soiled	Neutral detergent or Alkaline detergent	<ul style="list-style-type: none"> • Damp sweeping • Mechanical washing at 160-200 rpm (with water recovery)
Daily cleaning Manual cleaning	 	Neutral detergent / Disinfectant detergent ⁽¹⁾	<ul style="list-style-type: none"> • Damp sweeping • Manual washing with flat mop • Rinsing
OR			
Mechanical cleaning	  	Neutral detergent	<ul style="list-style-type: none"> • Damp sweeping • Mechanical washing at 160-200 rpm (with water recovery)
Deep cleaning Mechanical cleaning	   or 	Alkaline detergent	<ul style="list-style-type: none"> • Damp sweeping • Mechanical washing at 160-200 rpm (with water recovery)

[1] In areas where disinfection is essential (e.g. operating theatres, hospital rooms, etc.), alternate between using neutral detergent and amine-free disinfectant detergent.

These cleaning instructions have to be adapted depending on traffic and location of the area.

In the case of **manual maintenance** and to offer you the best results in terms of hygiene and appearance, **Gerflor recommends that you use neutral and alkaline detergents with high wetting power** (complete spreading and cleaning of the entire floor surface).

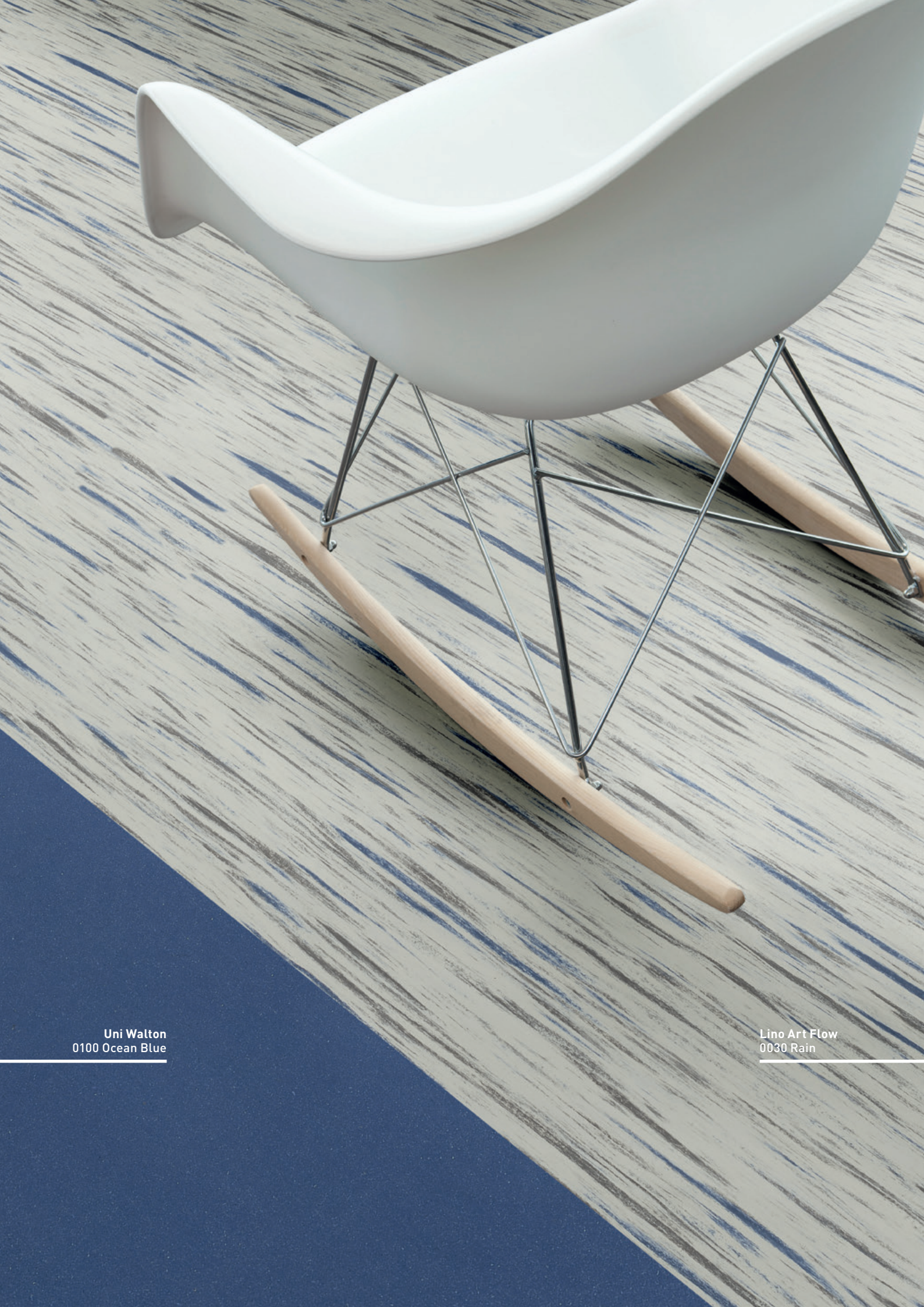


Gerflor DLW flooring products are to be installed in full accordance with Gerflor DLW installation instructions and recognized trade standards.

An effective, regular cleaning and maintenance program is vital for retaining a high appearance level.

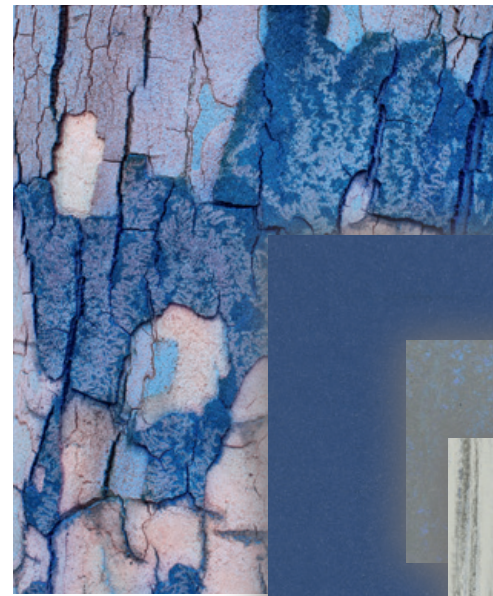
Gerflor DLW flooring products should only be used as floorcoverings.

Note: Gerflor DLW reserve the right to amend this specification without giving prior notice. For the latest versions of the technical specifications, check our website: www.gerflor.com



Uni Walton
0100 Ocean Blue

Lino Art Flow
0030 Rain

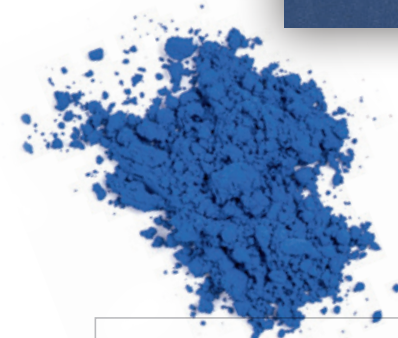


Lino Art Urban
0566 Shining Blue



Uni Walton
0100 Ocean Blue

Lino Art Flow
0030 Rain



Mix and match

Visualize your project

interiordesigner.gerflor.com



Lino Art Urban
0555 Flashy Street Grey



Lino Art Flow
0024 Magma

Marmorette
0117 Mandarin Orange

THE PROOF IS IN THE CUSTOMER EXPERIENCE



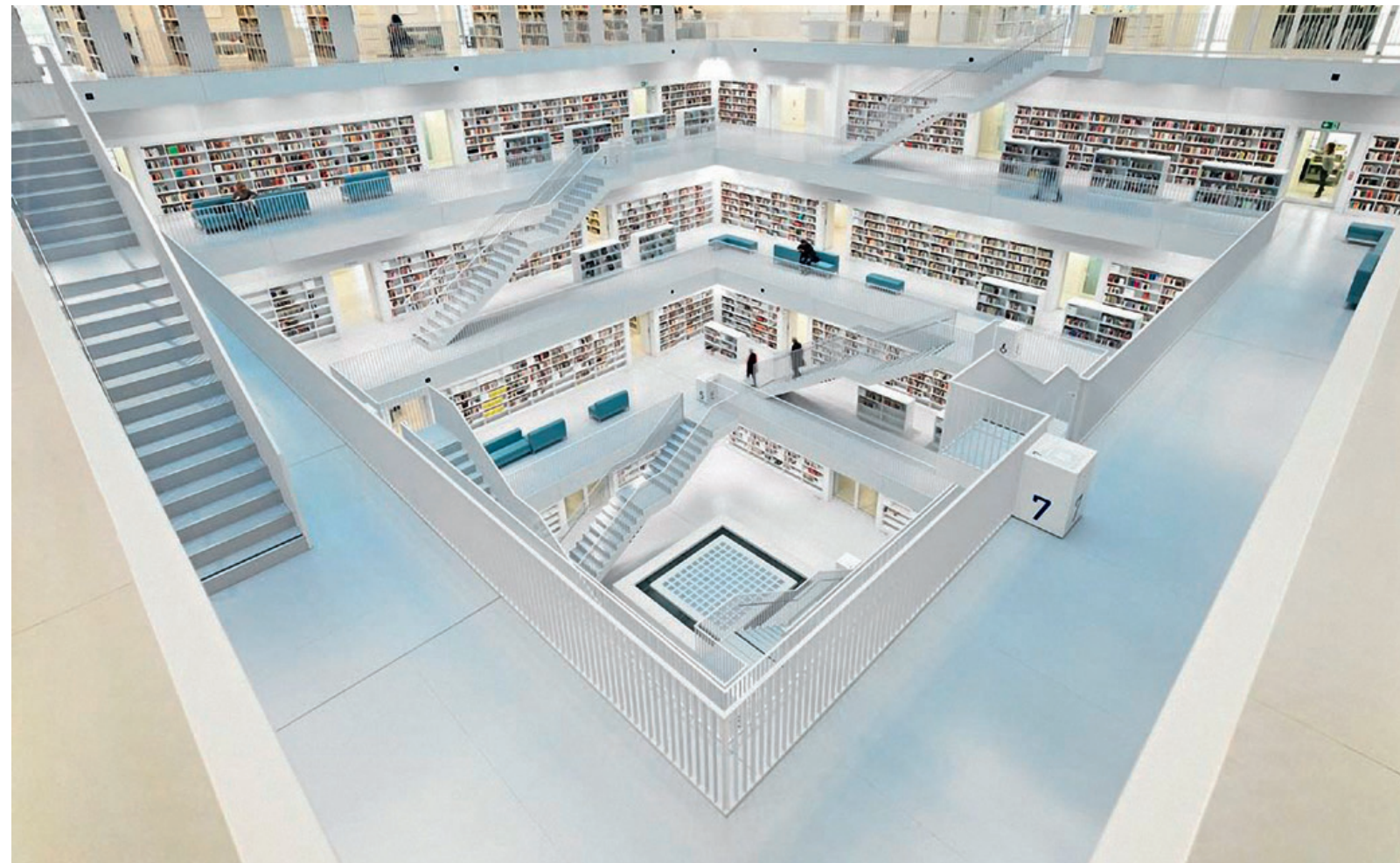
University of Praha,
Czech Republic



Oncology Center,
Moscow, Russia



Language School
Underhub,
Kiev, Ukraine



National Stadium,
Beijing, China



Glasgow Royal
Infirmary,
United Kingdom

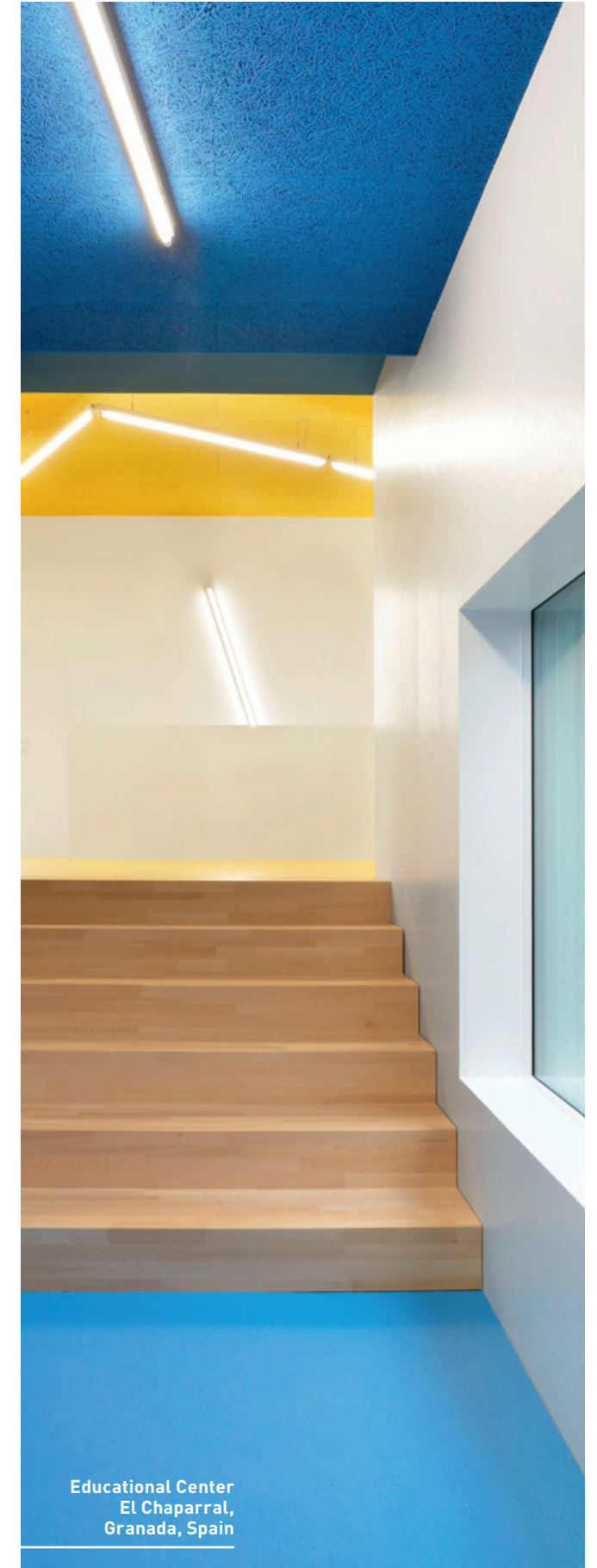


Kindergarden,
Terenten, Italy

TESTIMONIAL:

"After trying DLW linoleum equipped with Neocare™, I would definitely recommend it for healthcare projects, as it meets our demanding standards in terms of cleaning and hygiene."

Anita Heidelberg, Head of Cleaning and Disinfection,
Glostrup Hospital, Denmark



Educational Center
El Chaparral,
Granada, Spain



Z0045649

DLW Linoleum, Creative by Nature

At Gerflor, we believe that architecture has the power to improve people's lives.

Nature is our greatest source of inspiration. With the DLW Linoleum offer, we can provide architects with a collection of 159 colors, these are natural designs, that can enhance the sustainability and the creativity of their projects.

Made in Germany since 1882 and Cradle to Cradle certified™ Silver, the DLW Linoleum products are made of 98% natural materials including linseed oil, wood, limestone, jute and resin.

It's simply our way of connecting people closer to nature.

Mix and match COLLECTIONS

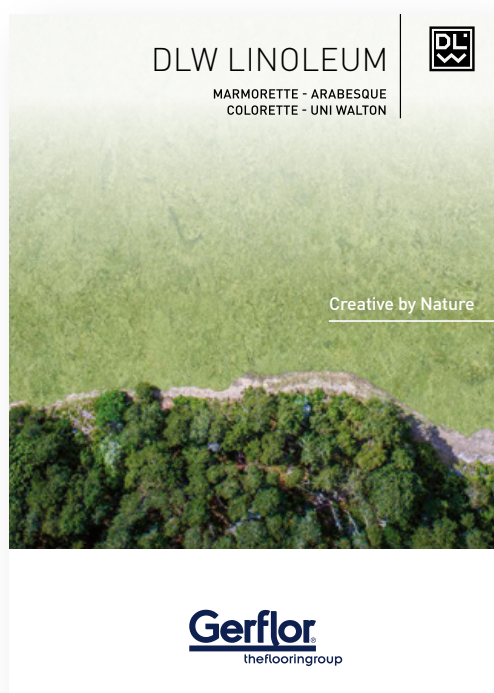


Photo credits: Gerflor - Realisation: jpe - 012022 - Z0045649 - Indicative documentation cost: 2 €